



Rabbit Anti-SLC25A25 antibody

SL19811R

Product Name:	SLC25A25
Chinese Name:	溶质载体家族蛋白25成员A25抗体
Alias:	Calcium-binding mitochondrial carrier protein SCaMC-2; KIAA1896; MCSC; MGC105138; MGC119514; MGC119515; MGC119516; MGC119517; Mitochondrial ATP Mg/Pi carrier; Mitochondrial ATP-Mg/Pi carrier protein 3; Mitochondrial Ca(2+)-dependent solute carrier protein 3; Mitochondrial Ca ²⁺ dependent solute carrier; Mitochondrial calcium-dependent solute carrier; PCSCL; RP11 395P17.4; SCAMC 2; SCAMC2; SCMC2_HUMAN; Short calcium binding mitochondrial carrier 2; SLC25A25; Small calcium binding mitochondrial carrier 2; Small calcium-binding mitochondrial carrier protein 2; Solute carrier family 25 (mitochondrial carrier phosphate carrier) member 25; Solute carrier family 25 member 25; solute carrier family 25, member 25, isoform a.
Organism Species:	Rabbit
Clonality:	Polyclonal
React Species:	Human,Mouse,Rat,Chicken,Dog,Pig,Cow,Horse,Rabbit,Zebrafish,Guinea Pig,Cat,
Applications:	WB=1:500-2000ELISA=1:500-1000 not yet tested in other applications. optimal dilutions/concentrations should be determined by the end user.
Molecular weight:	52kDa
Cellular localization:	The cell membrane
Form:	Lyophilized or Liquid
Concentration:	1mg/ml
immunogen:	KLH conjugated synthetic peptide derived from human SLC25A25:1-100/469
Lsotype:	IgG
Purification:	affinity purified by Protein A
Storage Buffer:	0.01M TBS(pH7.4) with 1% BSA, 0.03% Proclin300 and 50% Glycerol.
Storage:	Store at -20 °C for one year. Avoid repeated freeze/thaw cycles. The lyophilized antibody is stable at room temperature for at least one month and for greater than a year when kept at -20°C. When reconstituted in sterile pH 7.4 0.01M PBS or diluent of antibody the antibody is stable for at least two weeks at 2-4 °C.

PubMed:[PubMed](#)**Product Detail:**

The protein encoded by this gene belongs to the family of calcium-binding mitochondrial carriers, with a characteristic mitochondrial carrier domain at the C-terminus. These proteins are found in the inner membranes of mitochondria, and function as transport proteins. They shuttle metabolites, nucleotides and cofactors through the mitochondrial membrane and thereby connect and/or regulate cytoplasm and matrix functions. This protein may function as an ATP-Mg/Pi carrier that mediates the transport of Mg-ATP in exchange for phosphate, and likely responsible for the net uptake or efflux of adenine nucleotides into or from the mitochondria. Alternatively spliced transcript variants encoding different isoforms with a common C-terminus but variable N-termini have been described for this gene. [provided by RefSeq, Jul 2012]

Function:

Calcium-dependent mitochondrial solute carrier. Mitochondrial solute carriers shuttle metabolites, nucleotides, and cofactors through the mitochondrial inner membrane. May act as a ATP-Mg/Pi exchanger that mediates the transport of Mg-ATP in exchange for phosphate, catalyzing the net uptake or efflux of adenine nucleotides into or from the mitochondria.

Subcellular Location:

Mitochondrion inner membrane.

Tissue Specificity:

Present in various cell lines (at protein level). Widely expressed. Expressed in fetal and adult liver, skeletal muscle, testis, ovary, hippocampus and caudate nucleus. Isoform 1 is present in all tissues tested. Isoform 2 expression is restricted to kidney and lung.

Similarity:

Belongs to the mitochondrial carrier family.
Contains 3 EF-hand domains.
Contains 3 Solcar repeats.

SWISS:

Q6KCM7

Gene ID:

114789

Database links:

[Entrez Gene: 527786](#) Cow

[Entrez Gene: 114789](#) Human

[Entrez Gene: 227731](#) Mouse

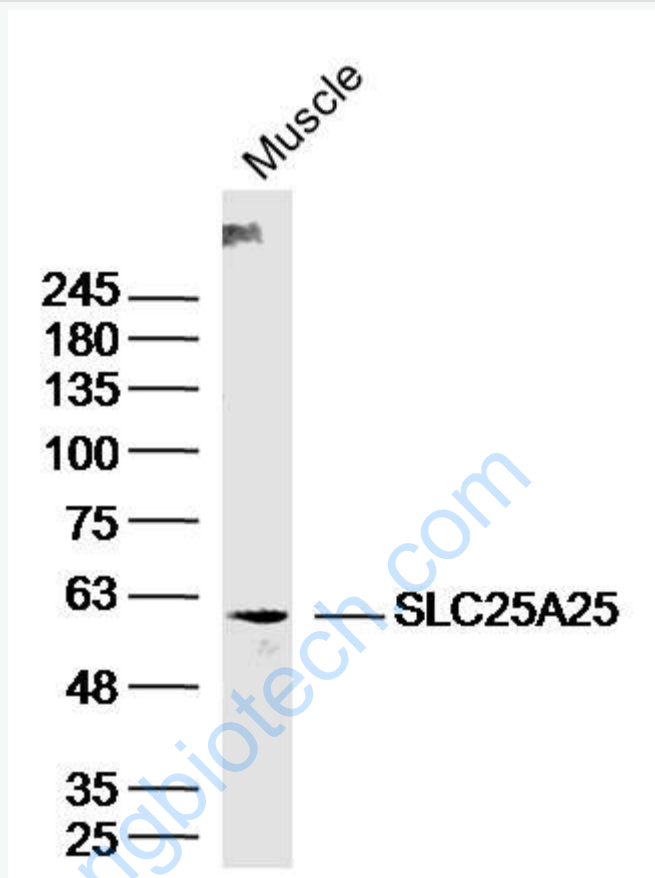
[Entrez Gene: 246771](#) Rat
[Entrez Gene: 406541](#) Zebrafish
[Ovim: 608745](#) Human
[SwissProt: Q0V7M4](#) Cow
[SwissProt: Q6KCM7](#) Human
[SwissProt: A2ASZ8](#) Mouse
[SwissProt: Q8K3P6](#) Rat
[SwissProt: A2CEQ0](#) Zebrafish
[Unigene: 5476](#) Human
[Unigene: 37395](#) Mouse
[Unigene: 473265](#) Mouse
[Unigene: 17644](#) Rat

Important Note:

This product as supplied is intended for research use only, not for use in human, therapeutic or diagnostic applications.

www.sunlongbiotech.com

Picture:



Sample: muscle (Mouse) Lysate at 40 ug

Primary: Anti-SLC25A25(SL19811R) at 1/300 dilution

Secondary: IRDye800CW Goat Anti-RabbitIgG at 1/20000 dilution

Predicted band size: 52kD

Observed band size: 60kD