



## Rabbit Anti-SLC34A1 antibody

SL19812R

<b>Product Name:</b>	SLC34A1
<b>Chinese Name:</b>	溶质载体家族蛋白34成员A1抗体
<b>Alias:</b>	FRTS2; Na(+)-dependent phosphate cotransporter 2A; Na(+)/Pi cotransporter 2A; Na <sup>+</sup> -phosphate cotransporter type II; naPi-2a; NAPI-3; naPi2a; NAPI3; NPHLOP1; NPT2; NPTIIa; renal sodium-dependent phosphate transporter; renal sodium/phosphate transporter protein 2; SLC11; SLC17A2; SLC17A2, formerly; NPT2A_HUMAN; sodium-dependent phosphate transport protein 2A; sodium-phosphate transport protein 2A; sodium/phosphate co-transporter; sodium/phosphate cotransporter 2A; sodium/phosphate transporter 2, kidney; solute carrier family 17 (sodium phosphate), member 2; solute carrier family 17, member 2, formerly; solute carrier family 34 (sodium phosphate), member 1; solute carrier family 34 (type II sodium/phosphate).
<b>Organism Species:</b>	Rabbit
<b>Clonality:</b>	Polyclonal
<b>React Species:</b>	Human,Mouse,Rat,Pig,Rabbit,Sheep,Cat,
<b>Applications:</b>	WB=1:500-2000ELISA=1:500-1000IHC-P=1:400-800IHC-F=1:400-800ICC=1:100-500IF=1:100-500 (Paraffin sections need antigen repair) not yet tested in other applications. optimal dilutions/concentrations should be determined by the end user.
<b>Molecular weight:</b>	69kDa
<b>Cellular localization:</b>	The cell membrane
<b>Form:</b>	Lyophilized or Liquid
<b>Concentration:</b>	1mg/ml
<b>immunogen:</b>	KLH conjugated synthetic peptide derived from human SLC34A1:101-200/639<Extracellular>
<b>Lsotype:</b>	IgG
<b>Purification:</b>	affinity purified by Protein A
<b>Storage Buffer:</b>	0.01M TBS(pH7.4) with 1% BSA, 0.03% Proclin300 and 50% Glycerol.
<b>Storage:</b>	Store at -20 °C for one year. Avoid repeated freeze/thaw cycles. The lyophilized antibody is stable at room temperature for at least one month and for greater than a year when kept at -20°C. When reconstituted in sterile pH 7.4 0.01M PBS or diluent of

	antibody the antibody is stable for at least two weeks at 2-4 °C.
<b>PubMed:</b>	<a href="#">PubMed</a>
<b>Product Detail:</b>	<p>This gene encodes a member of the type II sodium-phosphate cotransporter family. Mutations in this gene are associated with hypophosphatemia nephrolithiasis/osteoporosis 1. Alternative splicing results in multiple transcript variants. [provided by RefSeq, Nov 2009]</p> <p><b>Function:</b> May be involved in actively transporting phosphate into cells via Na<sup>+</sup> cotransport in the renal brush border membrane. Probably mediates 70-80% of the apical influx.</p> <p><b>Subunit:</b> Interacts via its C-terminal region with PDZK2 (By similarity). Interacts with SLC9A3R1.</p> <p><b>Subcellular Location:</b> Membrane; Multi-pass membrane protein.</p> <p><b>Tissue Specificity:</b> Kidney and lung.</p> <p><b>DISEASE:</b> The disease is caused by mutations affecting the gene represented in this entry. Disease description:A disease characterized by decreased renal phosphate absorption, renal phosphate wasting, hypophosphatemia, hyperphosphaturia, hypercalciuria, nephrolithiasis and osteoporosis.</p> <p><b>Similarity:</b> Belongs to the SLC34A transporter family.</p> <p><b>SWISS:</b> Q06495</p> <p><b>Gene ID:</b> 6569</p> <p><b>Database links:</b></p> <p><a href="#">Entrez Gene: 282483</a> Cow</p> <p><a href="#">Entrez Gene: 100735387</a> Guinea pig</p> <p><a href="#">Entrez Gene: 100058397</a> Horse</p> <p><a href="#">Entrez Gene: 6569</a> Human</p>

[Entrez Gene: 20505](#) Mouse

[Entrez Gene: 100155735](#) Pig

[Entrez Gene: 733703](#) Pig

[Entrez Gene: 100009392](#) Rabbit

[Entrez Gene: 25548](#) Rat

[Entrez Gene: 443505](#) Sheep

[Omim: 182309](#) Human

[SwissProt: Q06495](#) Human

[SwissProt: Q60825](#) Mouse

[SwissProt: Q28620](#) Rabbit

[SwissProt: Q06496](#) Rat

[SwissProt: O97704](#) Sheep

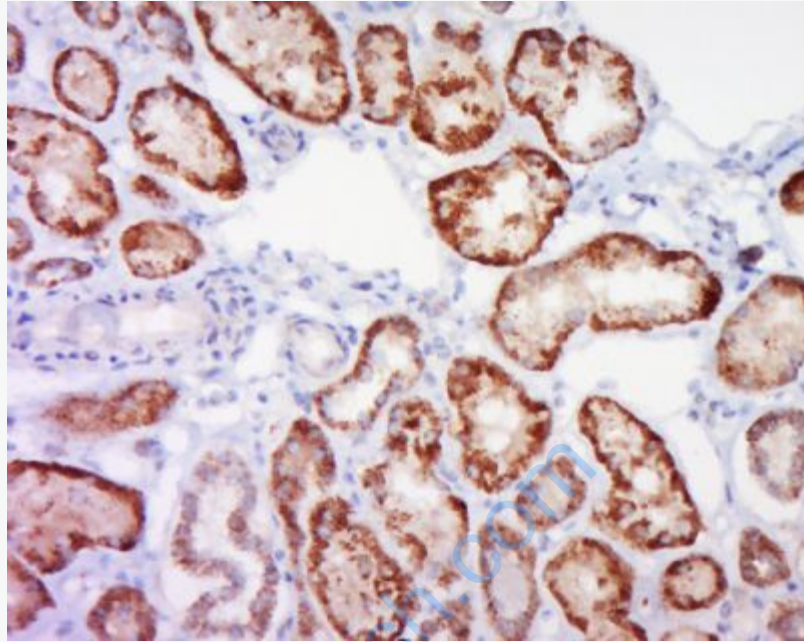
[Unigene: 936](#) Human

[Unigene: 276355](#) Mouse

[Unigene: 92022](#) Rat

**Important Note:**

This product as supplied is intended for research use only, not for use in human, therapeutic or diagnostic applications.

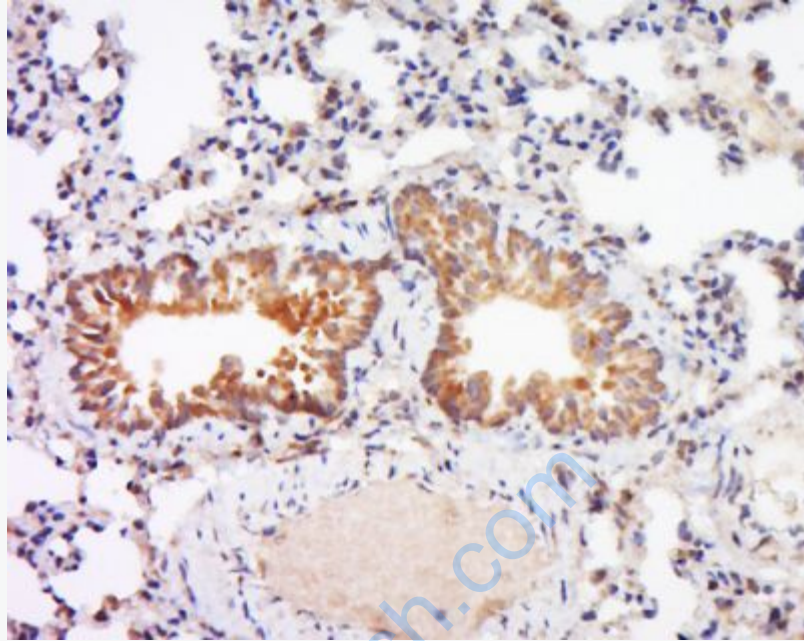


**Picture:**

Tissue/cell: human kidney tissue; 4% Paraformaldehyde-fixed and paraffin-embedded;

Antigen retrieval: citrate buffer ( 0.01M, pH 6.0 ), Boiling bathing for 15min; Block endogenous peroxidase by 3% Hydrogen peroxide for 30min; Blocking buffer (normal goat serum,C-0005) at 37°C for 20 min;

Incubation: Anti-SLC34A1 Polyclonal Antibody, Unconjugated(SL19812R) 1:600, overnight at 4°C, followed by conjugation to the secondary antibody(SP-0023) and DAB(C-0010) staining



Tissue/cell: rat lung tissue; 4% Paraformaldehyde-fixed and paraffin-embedded;  
Antigen retrieval: citrate buffer ( 0.01M, pH 6.0 ), Boiling bathing for 15min; Block endogenous peroxidase by 3% Hydrogen peroxide for 30min; Blocking buffer (normal goat serum,C-0005) at 37°C for 20 min;  
Incubation: Anti-SLC34A1 Polyclonal Antibody, Unconjugated(SL19812R) 1:600, overnight at 4°C, followed by conjugation to the secondary antibody(SP-0023) and DAB(C-0010) staining