



## Rabbit Anti-SLC25A26 antibody

SL19813R

<b>Product Name:</b>	SLC25A26
<b>Chinese Name:</b>	溶质载体家族蛋白25成员A26抗体
<b>Alias:</b>	Mitochondrial S-adenosylmethionine transporter; S-adenosylmethionine mitochondrial carrier protein; SAMC; SAMC_HUMAN; slc25a26; solute carrier family 25 (mitochondrial carrier; phosphate carrier), member 26; Solute carrier family 25 member 26.
<b>Organism Species:</b>	Rabbit
<b>Clonality:</b>	Polyclonal
<b>React Species:</b>	Human,Mouse,Cow,
<b>Applications:</b>	ELISA=1:500-1000IHC-P=1:400-800IHC-F=1:400-800ICC=1:100-500IF=1:100-500 (Paraffin sections need antigen repair) not yet tested in other applications. optimal dilutions/concentrations should be determined by the end user.
<b>Molecular weight:</b>	29kDa
<b>Cellular localization:</b>	The cell membrane
<b>Form:</b>	Lyophilized or Liquid
<b>Concentration:</b>	1mg/ml
<b>immunogen:</b>	KLH conjugated synthetic peptide derived from human SLC25A26:101-200/274
<b>Lsotype:</b>	IgG
<b>Purification:</b>	affinity purified by Protein A
<b>Storage Buffer:</b>	0.01M TBS(pH7.4) with 1% BSA, 0.03% Proclin300 and 50% Glycerol.
<b>Storage:</b>	Store at -20 °C for one year. Avoid repeated freeze/thaw cycles. The lyophilized antibody is stable at room temperature for at least one month and for greater than a year when kept at -20°C. When reconstituted in sterile pH 7.4 0.01M PBS or diluent of antibody the antibody is stable for at least two weeks at 2-4 °C.
<b>PubMed:</b>	<a href="#">PubMed</a>
<b>Product Detail:</b>	Mitochondrial carriers, including SLC25A26, are a family of transport proteins found mostly in the inner membranes of mitochondria. They shuttle metabolites and cofactors through the mitochondrial membrane (Agrimi et al., 2004 [PubMed 14674884]).[supplied by OMIM, Mar 2008]

**Function:**

Mitochondrial solute carriers shuttle metabolites, nucleotides, and cofactors through the mitochondrial inner membrane. Specifically mediates the transport of S-adenosylmethionine (SAM) into the mitochondria.

**Subcellular Location:**

Mitochondrion inner membrane.

**Tissue Specificity:**

Widely expressed. Highly expressed in testis, with moderate expression in brain, heart, kidney, lung, skeletal muscle, pancreas, small intestine and liver, and low expression in spleen.

**Similarity:**

Belongs to the mitochondrial carrier family.  
Contains 3 Solcar repeats.

**SWISS:**

Q70HW3

**Gene ID:**

115286

**Database links:**

[Entrez Gene: 614713](#) Cow

[Entrez Gene: 611050](#) Dog

[Entrez Gene: 100719522](#) Guinea pig

[Entrez Gene: 115286](#) Human

[Entrez Gene: 67582](#) Mouse

[Entrez Gene: 100624317](#) Pig

[Entrez Gene: 362403](#) Rat

[Entrez Gene: 100147801](#) Sheep

[Entrez Gene: 560478](#) Zebrafish

[Omim: 611037](#) Human

[SwissProt: A6QR09](#) Cow

[SwissProt: Q70HW3](#) Human

[SwissProt: Q5U680](#) Mouse

[SwissProt: Q4V9P0](#) Zebrafish

[Unigene: 379386](#) Human

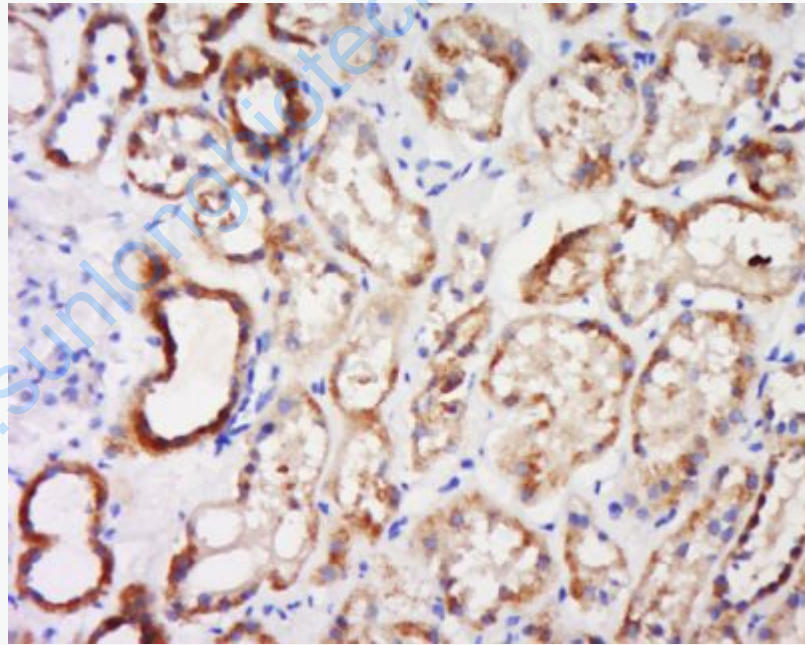
[Unigene: 280725](#) Mouse

[Unigene: 96303](#) Rat

**Important Note:**

This product as supplied is intended for research use only, not for use in human, therapeutic or diagnostic applications.

**Picture:**



Tissue/cell: human kidney tissue; 4% Paraformaldehyde-fixed and paraffin-embedded;

Antigen retrieval: citrate buffer ( 0.01M, pH 6.0 ), Boiling bathing for 15min; Block endogenous peroxidase by 3% Hydrogen peroxide for 30min; Blocking buffer (normal goat serum,C-0005) at 37°C for 20 min;

Incubation: Anti-SLC25A26 Polyclonal Antibody, Unconjugated(SL19813R) 1:500, overnight at 4°C, followed by conjugation to the secondary antibody(SP-0023) and DAB(C-0010) staining

[www.sunlongbiotech.com](http://www.sunlongbiotech.com)