



Rabbit Anti-RHBG antibody

SL19868R

Product Name:	RHBG
Chinese Name:	RH家族B型glycoproteinRHBG抗体
Alias:	Ammonium transporter Rh type B; Rh family type B glycoprotein; Rh type B glycoprotein; RHBG; RHBG_HUMAN; Rhesus blood group family type B glycoprotein; SLC42A2.
Organism Species:	Rabbit
Clonality:	Polyclonal
React Species:	Human,Mouse,Rat,Cow,Rabbit,Sheep,
Applications:	WB=1:500-2000ELISA=1:500-1000IHC-P=1:400-800IHC-F=1:400-800ICC=1:100-500IF=1:100-500 (Paraffin sections need antigen repair) not yet tested in other applications. optimal dilutions/concentrations should be determined by the end user.
Molecular weight:	47kDa
Cellular localization:	The cell membrane
Form:	Lyophilized or Liquid
Concentration:	1mg/ml
immunogen:	KLH conjugated synthetic peptide derived from human RHBG:331-430/441<Extracellular>
Lsotype:	IgG
Purification:	affinity purified by Protein A
Storage Buffer:	0.01M TBS(pH7.4) with 1% BSA, 0.03% Proclin300 and 50% Glycerol.
Storage:	Store at -20 °C for one year. Avoid repeated freeze/thaw cycles. The lyophilized antibody is stable at room temperature for at least one month and for greater than a year when kept at -20°C. When reconstituted in sterile pH 7.4 0.01M PBS or diluent of antibody the antibody is stable for at least two weeks at 2-4 °C.
PubMed:	PubMed
Product Detail:	This gene encodes one of two non-erythroid members of the Rhesus (Rh) protein family. Non-erythroid Rh protein family members are mainly expressed in the kidney and belong to the methylammonium-ammonium permease/ammonia transporters superfamily. All Rh family proteins are predicted to be transmembrane proteins with 12

membrane spanning domains and intracytoplasmic N- and C-termini. Alternative splicing of this gene results in multiple transcript variants. [provided by RefSeq, Jan 2012]

Function:

Functions as a specific ammonium transporter.

Subunit:

Interacts (via C-terminus) with ANK2 and ANK3; required for targeting to the basolateral membrane.

Subcellular Location:

Basolateral cell membrane. Cytoplasmic vesicle membrane.

Tissue Specificity:

Specifically expressed in kidney. Also detected in liver and ovary.

Post-translational modifications:

N-glycosylated.

DISEASE:

Fetally expressed by kidney and to a lower extent in liver.

Similarity:

Belongs to the ammonium transporter (TC 2.A.49) family. Rh subfamily.

SWISS:

Q9H310

Gene ID:

57127

Database links:

[Entrez Gene: 57127](#) Human

[Omim: 607079](#) Human

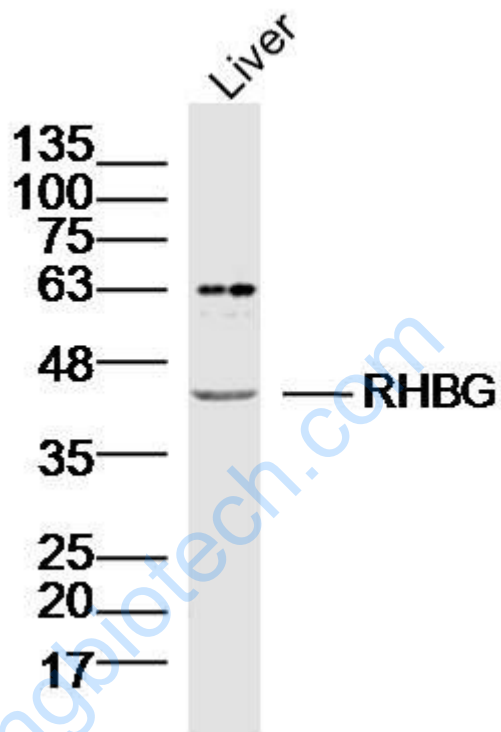
[SwissProt: Q9H310](#) Human

[Unigene: 131835](#) Human

Important Note:

This product as supplied is intended for research use only, not for use in human, therapeutic or diagnostic applications.

Picture:



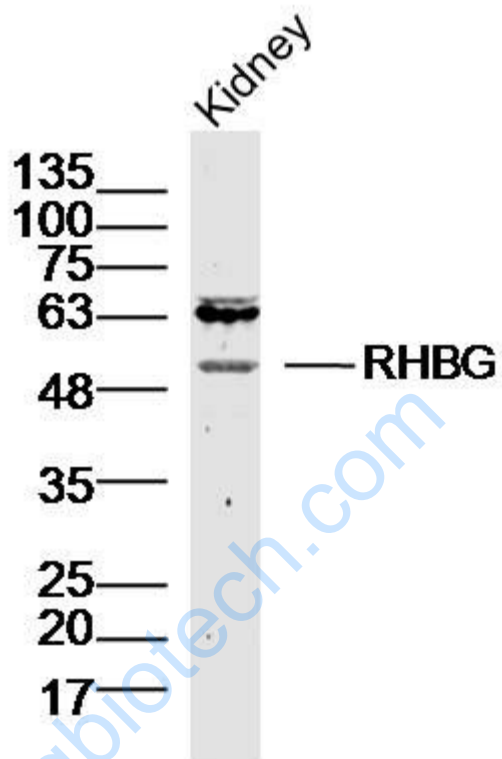
Sample: Liver (Mouse) Lysate at 40 ug

Primary: Anti-RHBG (SL19868R) at 1/300 dilution

Secondary: IRDye800CW Goat Anti-Rabbit IgG at 1/20000 dilution

Predicted band size: 47 kD

Observed band size: 47 kD



Sample: Kidney (Mouse) Lysate at 40 ug

Primary: Anti-RHBG (SL19868R) at 1/300 dilution

Secondary: IRDye800CW Goat Anti-Rabbit IgG at 1/20000 dilution

Predicted band size: 47 kD

Observed band size: 49 kD