



Rabbit Anti-Rho guanine exchange factor 16 antibody

SL19870R

Product Name:	Rho guanine exchange factor 16
Chinese Name:	鸟嘌呤交换因子16抗体
Alias:	ARHGEF 16; ARHGEF16; ARHGG_HUMAN; Ephexin 4; Ephexin-4; EPHEXIN4; GEF16; NBR; Putative Neuroblastoma Protein; Rho guanine exchange factor (GEF) 16; Rho guanine nucleotide exchange factor (GEF) 16; Rho guanine nucleotide exchange factor 16.
Organism Species:	Rabbit
Clonality:	Polyclonal
React Species:	Human,Mouse,Horse,
Applications:	WB=1:500-2000ELISA=1:500-1000IHC-P=1:400-800IHC-F=1:400-800ICC=1:100-500IF=1:100-500 (Paraffin sections need antigen repair) not yet tested in other applications. optimal dilutions/concentrations should be determined by the end user.
Molecular weight:	80kDa
Cellular localization:	cytoplasmic
Form:	Lyophilized or Liquid
Concentration:	1mg/ml
immunogen:	KLH conjugated synthetic peptide derived from human RHEBL1:151-250/709
Lsotype:	IgG
Purification:	affinity purified by Protein A
Storage Buffer:	0.01M TBS(pH7.4) with 1% BSA, 0.03% Proclin300 and 50% Glycerol.
Storage:	Store at -20 °C for one year. Avoid repeated freeze/thaw cycles. The lyophilized antibody is stable at room temperature for at least one month and for greater than a year when kept at -20°C. When reconstituted in sterile pH 7.4 0.01M PBS or diluent of antibody the antibody is stable for at least two weeks at 2-4 °C.
PubMed:	PubMed
Product Detail:	Although the specific function of this protein is not known yet, it is thought to be involved in protein-protein and protein-lipid interactions. [provided by RefSeq, Jul

2008]

Function:

Guanyl-nucleotide exchange factor of the RHOG GTPase stimulating the exchange of RHOG-associated GDP for GTP. May play a role in chemotactic cell migration by mediating the activation of RAC1 by EPHA2. May also activate CDC42 and mediate activation of CDC42 by the viral protein HPV16 E6.

Subunit:

Interacts with ELMO2, EPHA2, RAC1 and RHOG; mediates activation of RAC1 by EPHA2. Interacts with TAX1BP3 (via PDZ domain). May interact with CDC42; stimulated by HPV16 E6.

Subcellular Location:

Cytoplasm.

Similarity:

Contains 1 DH (DBL-homology) domain.

Contains 1 PH domain.

Contains 1 SH3 domain.

SWISS:

Q5VV41

Gene ID:

27237

Database links:

[Entrez Gene: 27237](#) Human

[Entrez Gene: 230972](#) Mouse

[SwissProt: Q5VV41](#) Human

[SwissProt: Q3U5C8](#) Mouse

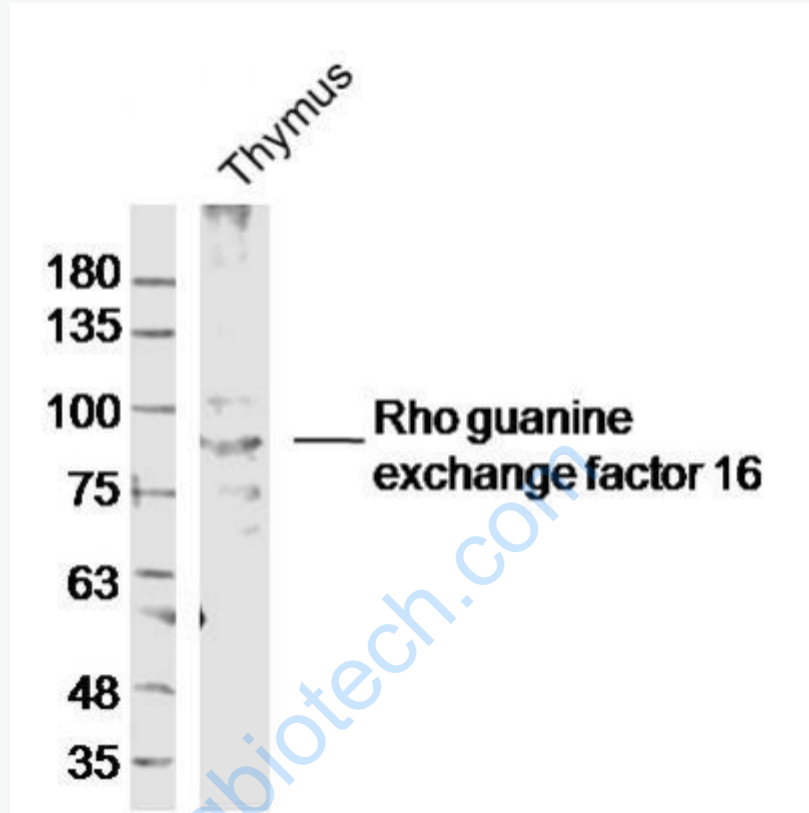
[Unigene: 87435](#) Human

[Unigene: 38481](#) Mouse

Important Note:

This product as supplied is intended for research use only, not for use in human, therapeutic or diagnostic applications.

Picture:



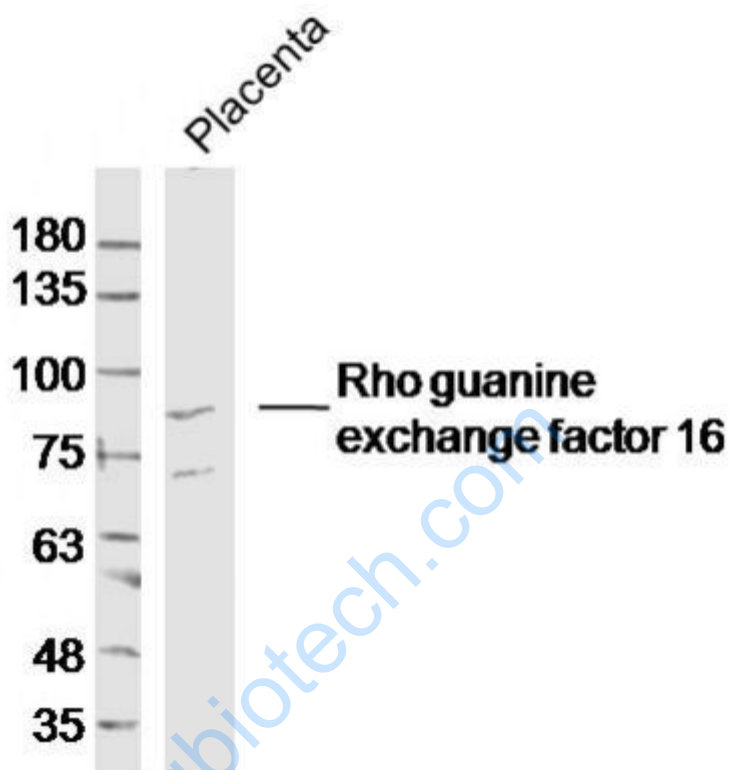
Sample: Thymus (Mouse) Lysate at 40 ug

Primary: Anti-Rho guanine exchange factor 16(SL19870R) at 1/300 dilution

Secondary: IRDye800CW Goat Anti-Rabbit IgG at 1/20000 dilution

Predicted band size: 80kD

Observed band size: 80kD



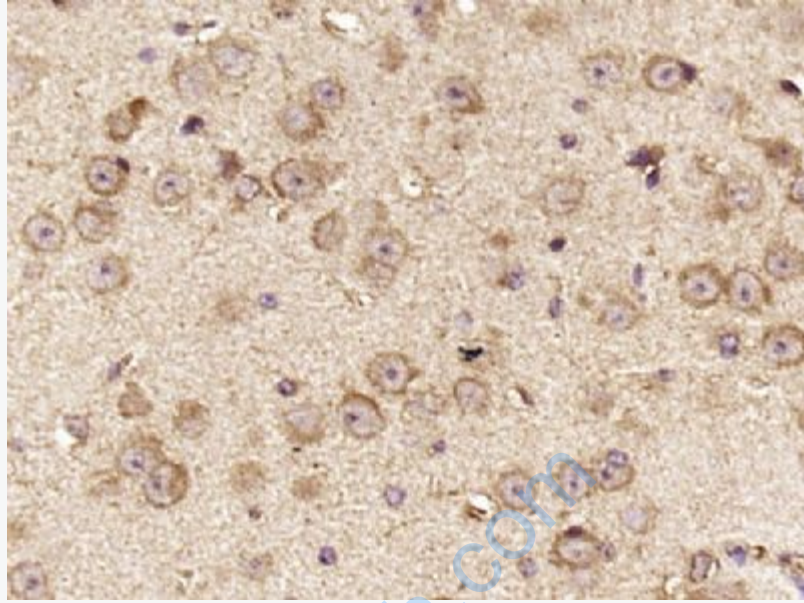
Sample: Placenta (Mouse) Lysate at 40 ug

Primary: Anti-Rho guanine exchange factor 16(SL19870R) at 1/300 dilution

Secondary: IRDye800CW Goat Anti-Rabbit IgG at 1/20000 dilution

Predicted band size: 80kD

Observed band size: 80kD



Paraformaldehyde-fixed, paraffin embedded (Mouse brain); Antigen retrieval by boiling in sodium citrate buffer (pH6.0) for 15min; Block endogenous peroxidase by 3% hydrogen peroxide for 20 minutes; Blocking buffer (normal goat serum) at 37°C for 30min; Antibody incubation with (Rho guanine exchange factor 16) Polyclonal Antibody, Unconjugated (SL19870R) at 1:400 overnight at 4°C, followed by operating according to SP Kit(Rabbit) (sp-0023) instructions and DAB staining.