



Rabbit Anti-MCP3 antibody

SL1987R

Product Name:	MCP3
Chinese Name:	单核细胞趋化蛋白3抗体
Alias:	C-C motif chemokine 7; CCL7; CCL7_HUMAN; Chemokine CC Motif Ligand 7; FIC; MARC; MCP-3; MCP3; Monocyte chemoattractant protein 3; Monocyte chemotactic protein 3; NC28; RP23-350G1.4; SCYA6; SCYA7; Small inducible cytokine A7; Small-inducible cytokine A7.
Organism Species:	Rabbit
Clonality:	Polyclonal
React Species:	Mouse,Rat,
Applications:	ELISA=1:500-1000IHC-P=1:400-800IHC-F=1:400-800IF=1:100-500 (Paraffin sections need antigen repair) not yet tested in other applications. optimal dilutions/concentrations should be determined by the end user.
Molecular weight:	11kDa
Cellular localization:	Secretory protein
Form:	Lyophilized or Liquid
Concentration:	1mg/ml
immunogen:	KLH conjugated synthetic peptide derived from mouse MCP-3:24-97/97
Lsotype:	IgG
Purification:	affinity purified by Protein A
Storage Buffer:	0.01M TBS(pH7.4) with 1% BSA, 0.03% Proclin300 and 50% Glycerol.
Storage:	Store at -20 °C for one year. Avoid repeated freeze/thaw cycles. The lyophilized antibody is stable at room temperature for at least one month and for greater than a year when kept at -20°C. When reconstituted in sterile pH 7.4 0.01M PBS or diluent of antibody the antibody is stable for at least two weeks at 2-4 °C.
PubMed:	PubMed
Product Detail:	This gene encodes monocyte chemotactic protein 3, a secreted chemokine which attracts macrophages during inflammation and metastasis. It is a member of the C-C subfamily of chemokines which are characterized by having two adjacent cysteine residues. The protein is an in vivo substrate of matrix metalloproteinase 2, an enzyme which degrades

components of the extracellular matrix. This gene is part of a cluster of C-C chemokine family members on chromosome 17q. [provided by RefSeq, Jul 2008]

Function:

Chemotactic factor that attracts monocytes and eosinophils, but not neutrophils. Augments monocyte anti-tumor activity. Also induces the release of gelatinase B. This protein can bind heparin. Binds to CCR1, CCR2 and CCR3.

Subunit:

Monomer.

Subcellular Location:

Secreted.

Post-translational modifications:

O-glycosylated.

Similarity:

Belongs to the intercrine beta (chemokine CC) family.

SWISS:

Q9QXY8

Gene ID:

20306

Database links:

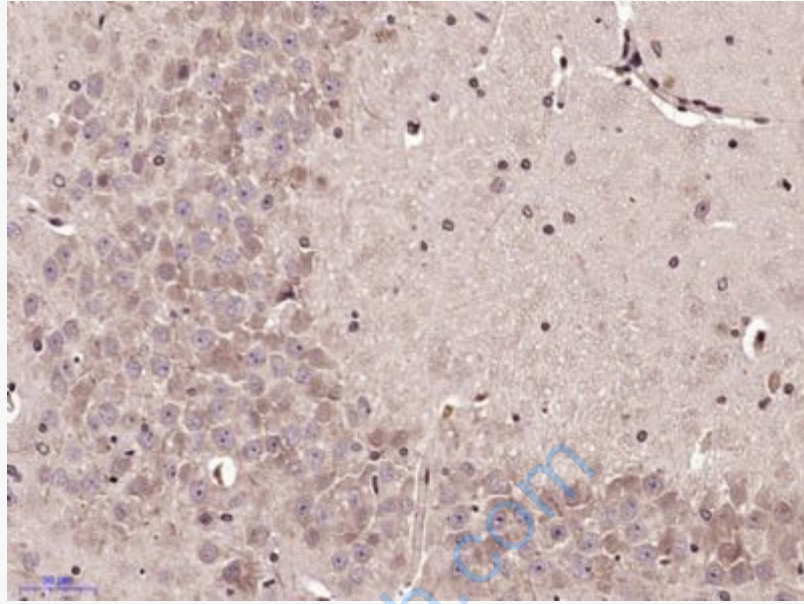
[Entrez Gene: 20306](#)Mouse

[SwissProt: Q03366](#)Mouse

[Unigene: 341574](#)Mouse

Important Note:

This product as supplied is intended for research use only, not for use in human, therapeutic or diagnostic applications.



Picture:

Paraformaldehyde-fixed, paraffin embedded (Rat brain); Antigen retrieval by microwave in sodium citrate buffer (pH6.0) ; Block endogenous peroxidase by 3% hydrogen peroxide for 30 minutes; Blocking buffer (3% BSA) at RT for 30min; Antibody incubation with (MCP3) Polyclonal Antibody, Unconjugated (SL1987R) at 1:400 overnight at 4°C, followed by conjugation to the secondary antibody (labeled with HRP) and DAB staining.