



Rabbit Anti-phospho-Parvin alpha (Ser8) antibody

SL19894R

Product Name:	phospho-Parvin alpha (Ser8)
Chinese Name:	磷酸化基质重塑相关蛋白PARVA抗体
Alias:	Parvin alpha (phospho S8); p-Parvin alpha (phospho S8); Actopaxin; Alpha parvin; Alpha-parvin; Calponin like integrin linked kinase binding protein; Calponin-like integrin-linked kinase-binding protein; CH ILKBP; CH-ILKBP; FLJ10793; FLJ12254; Matrix remodelling associated 2; Matrix remodelling associated protein 2; Matrix-remodeling-associated protein 2; MXRA 2; MXRA2; PARV A; PARVA; PARVA HUMAN.
Organism Species:	Rabbit
Clonality:	Polyclonal
React Species:	Human,Mouse,Rat,Cow,Rabbit,
Applications:	WB=1:500-2000ELISA=1:500-1000IHC-P=1:400-800IHC-F=1:400-800ICC=1:100-500IF=1:100-500 (Paraffin sections need antigen repair) not yet tested in other applications. optimal dilutions/concentrations should be determined by the end user.
Molecular weight:	42kDa
Cellular localization:	cytoplasmicThe cell membrane
Form:	Lyophilized or Liquid
Concentration:	1mg/ml
immunogen:	KLH conjugated synthesised phosphopeptide derived from human Parvin alpha around the phosphorylation site of Ser8:QK(p-S)PS
Isotype:	IgG
Purification:	affinity purified by Protein A
Storage Buffer:	0.01M TBS(pH7.4) with 1% BSA, 0.03% Proclin300 and 50% Glycerol.
Storage:	Store at -20 °C for one year. Avoid repeated freeze/thaw cycles. The lyophilized antibody is stable at room temperature for at least one month and for greater than a year when kept at -20°C. When reconstituted in sterile pH 7.4 0.01M PBS or diluent of antibody the antibody is stable for at least two weeks at 2-4 °C.
PubMed:	PubMed

This gene encodes a member of the parvin family of actin-binding proteins. Parvins are associated with focal contacts and contain calponin homology domains that bind to actin filaments. The encoded protein is part of the integrin-linked kinase signaling complex and plays a role in cell adhesion, motility and survival. [provided by RefSeq, Dec 2010]

Function:

Probably plays a role in the regulation of cell adhesion and cytoskeleton organization. Plays a role in ciliogenesis.

Subcellular Location:

Cell junction > focal adhesion. Cell membrane. Cytoplasm > cytoskeleton. Constituent of focal adhesions.

Tissue Specificity:

Widely expressed, with highest levels in heart, skeletal muscle, kidney and liver.

Similarity:

Belongs to the parvin family.
Contains 2 CH (calponin-homology) domains.

SWISS:

Q9NVD7

Gene ID:

55742

Database links:

[Entrez Gene: 55742](#) Human

[Entrez Gene: 57342](#) Mouse

[Entrez Gene: 57341](#) Rat

[Omim: 608120](#) Human

[SwissProt: Q9NVD7](#) Human

[SwissProt: Q9EPC1](#) Mouse

[SwissProt: Q9HB97](#) Rat

[Unigene: 432914](#) Human

[Unigene: 143763](#) Mouse

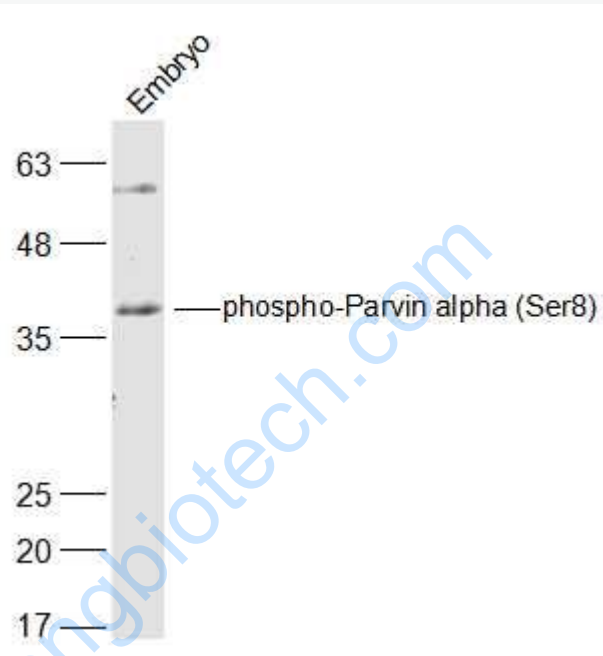
[Unigene: 92564](#) Rat

Product Detail:

Important Note:

This product as supplied is intended for research use only, not for use in human, therapeutic or diagnostic applications.

Picture:



Sample:

Embryo (Mouse) Lysate at 40 ug

Primary: Anti-phospho-Parvin alpha (Ser8) (SL19894R) at 1/300 dilution

Secondary: IRDye800CW Goat Anti-Rabbit IgG at 1/20000 dilution

Predicted band size: 42 kD

Observed band size: 42 kD