



Rabbit Anti-PASD1/CT63 antibody

SL19895R

Product Name:	PASD1/CT63
Chinese Name:	癌/睾丸抗原63
Alias:	Cancer/testis antigen 63; CT63; OX-TES-1; PAS domain containing 1; PAS domain-containing protein 1; PASD1; PASD1 HUMAN.
Organism Species:	Rabbit
Clonality:	Polyclonal
React Species:	Human,
Applications:	WB=1:500-2000ELISA=1:500-1000IHC-P=1:400-800IHC-F=1:400-800ICC=1:100-500IF=1:100-500 (Paraffin sections need antigen repair) not yet tested in other applications. optimal dilutions/concentrations should be determined by the end user.
Molecular weight:	70kDa
Cellular localization:	The nucleus
Form:	Lyophilized or Liquid
Concentration:	1mg/ml
immunogen:	KLH conjugated synthetic peptide derived from human PASD1/CT63:1-100/773
Lsotype:	IgG
Purification:	affinity purified by Protein A
Storage Buffer:	0.01M TBS(pH7.4) with 1% BSA, 0.03% Proclin300 and 50% Glycerol.
Storage:	Store at -20 °C for one year. Avoid repeated freeze/thaw cycles. The lyophilized antibody is stable at room temperature for at least one month and for greater than a year when kept at -20°C. When reconstituted in sterile pH 7.4 0.01M PBS or diluent of antibody the antibody is stable for at least two weeks at 2-4 °C.
PubMed:	PubMed
Product Detail:	This gene encodes a protein that is thought to function as a transcription factor. The protein is a cancer-associated antigen that can stimulate autologous T-cell responses, and it is therefore considered to be a potential immunotherapeutic target for the treatment of various hematopoietic malignancies, including diffuse large B-cell lymphoma. [provided by RefSeq, May 2010]

Function:

May function as a transcription factor.

Subcellular Location:

Nucleus.

Tissue Specificity:

Testis-specific. Found in histologically normal tissues from patients with uterus, lung and small intestine cancers. Widespread expression seen in solid tumors and diffuse large B-cell lymphoma (DLBCL)-derived cell lines. Isoform 2 is expressed in all DLBCL-derived cell lines, while isoform 1 is preferentially expressed in cell lines derived from non-germinal center DLBCL.

Similarity:

Contains 1 PAS (PER-ARNT-SIM) domain.

SWISS:

Q8IV76

Gene ID:

139135

Database links:

[Entrez Gene: 139135](#) Human

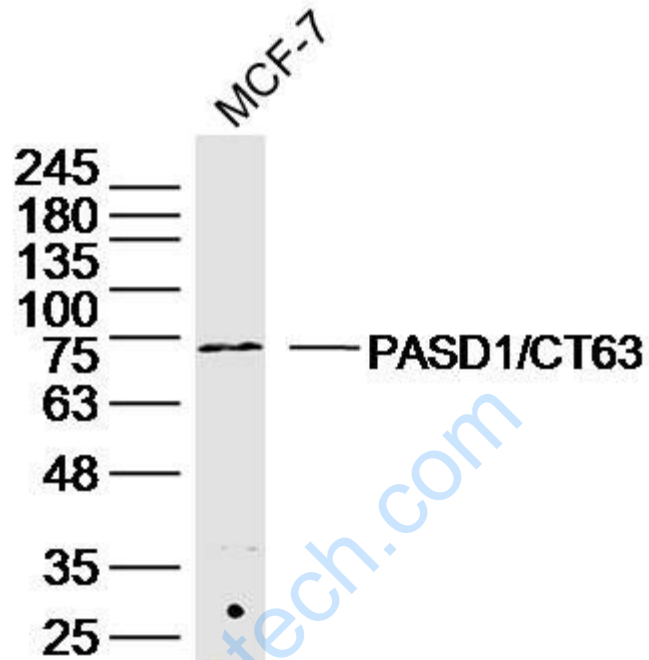
[SwissProt: Q8IV76](#) Human

[Unigene: 160594](#) Human

Important Note:

This product as supplied is intended for research use only, not for use in human, therapeutic or diagnostic applications.

Picture:



Sample: MCF-7 Cell (Human) Lysate at 40 ug

Primary: Anti-PASD1/CT63 (SL19895R) at 1/300 dilution

Secondary: IRDye800CW Goat Anti-Rabbit IgG at 1/20000 dilution

Predicted band size: 70 kD

Observed band size: 73 kD