



## Rabbit Anti-ARP1B/PC3 antibody

SL19902R

<b>Product Name:</b>	ARP1B/PC3
<b>Chinese Name:</b>	肌动蛋白相关蛋白1B抗体
<b>Alias:</b>	Actin related protein 1B; Actin-related protein 1B; ACTR 1B; ACTR1B; ACTY_HUMAN; ARP 1B; ARP1 actin related protein 1 homolog B; ARP1 actin related protein 1 homolog B centractin beta (yeast); ARP1 actin related protein 1 homolog B centractin beta; ARP1 actin related protein 1 yeast homolog B centractin beta; ARP1 yeast homolog B; ARP1B; Beta centractin; Beta-centractin; Centractin beta (Yeast); Centractin beta; CTRN 2; CTRN2; PC 3; PC3.
<b>Organism Species:</b>	Rabbit
<b>Clonality:</b>	Polyclonal
<b>React Species:</b>	Human,Mouse,Dog,Pig,Cow,Horse,Rabbit,Sheep,
<b>Applications:</b>	WB=1:500-2000ELISA=1:500-1000IHC-P=1:400-800IHC-F=1:400-800ICC=1:100-500IF=1:100-500 (Paraffin sections need antigen repair) not yet tested in other applications. optimal dilutions/concentrations should be determined by the end user.
<b>Molecular weight:</b>	42kDa
<b>Cellular localization:</b>	cytoplasmic
<b>Form:</b>	Lyophilized or Liquid
<b>Concentration:</b>	1mg/ml
<b>immunogen:</b>	KLH conjugated synthetic peptide derived from human ARP1B:301-376/376
<b>Lsotype:</b>	IgG
<b>Purification:</b>	affinity purified by Protein A
<b>Storage Buffer:</b>	0.01M TBS(pH7.4) with 1% BSA, 0.03% Proclin300 and 50% Glycerol.
<b>Storage:</b>	Store at -20 °C for one year. Avoid repeated freeze/thaw cycles. The lyophilized antibody is stable at room temperature for at least one month and for greater than a year when kept at -20°C. When reconstituted in sterile pH 7.4 0.01M PBS or diluent of antibody the antibody is stable for at least two weeks at 2-4 °C.
<b>PubMed:</b>	<a href="#">PubMed</a>
<b>Product Detail:</b>	This gene encodes a 42.3 kD subunit of dynactin, a macromolecular complex consisting of 10 subunits ranging in size from 22 to 150 kD. Dynactin binds to both microtubules

and cytoplasmic dynein and is involved in a diverse array of cellular functions, including ER-to-Golgi transport, the centripetal movement of lysosomes and endosomes, spindle formation, chromosome movement, nuclear positioning, and axonogenesis. This subunit, like ACTR1A, is an actin-related protein. These two proteins, which are of equal length and share 90% amino acid identity, are present in a constant ratio of approximately 1:15 in the dynactin complex. [provided by RefSeq, Aug 2008]

**Function:**

Component of a multi-subunit complex involved in microtubule based vesicle motility. It is associated with the centrosome.

**Subcellular Location:**

Cytoplasm > cytoskeleton. Cytoplasm > cytoskeleton > centrosome.

**Similarity:**

Belongs to the actin family. ARP1 subfamily.

**SWISS:**

P42025

**Gene ID:**

10120

**Database links:**

[Entrez Gene: 100125305](#) Cow

[Entrez Gene: 611680](#) Dog

[Entrez Gene: 10120](#) Human

[Entrez Gene: 226977](#) Mouse

[Entrez Gene: 316333](#) Rat

[Omim: 605144](#) Human

[SwissProt: A4IFE3](#) Cow

[SwissProt: P42025](#) Human

[SwissProt: Q8R5C5](#) Mouse

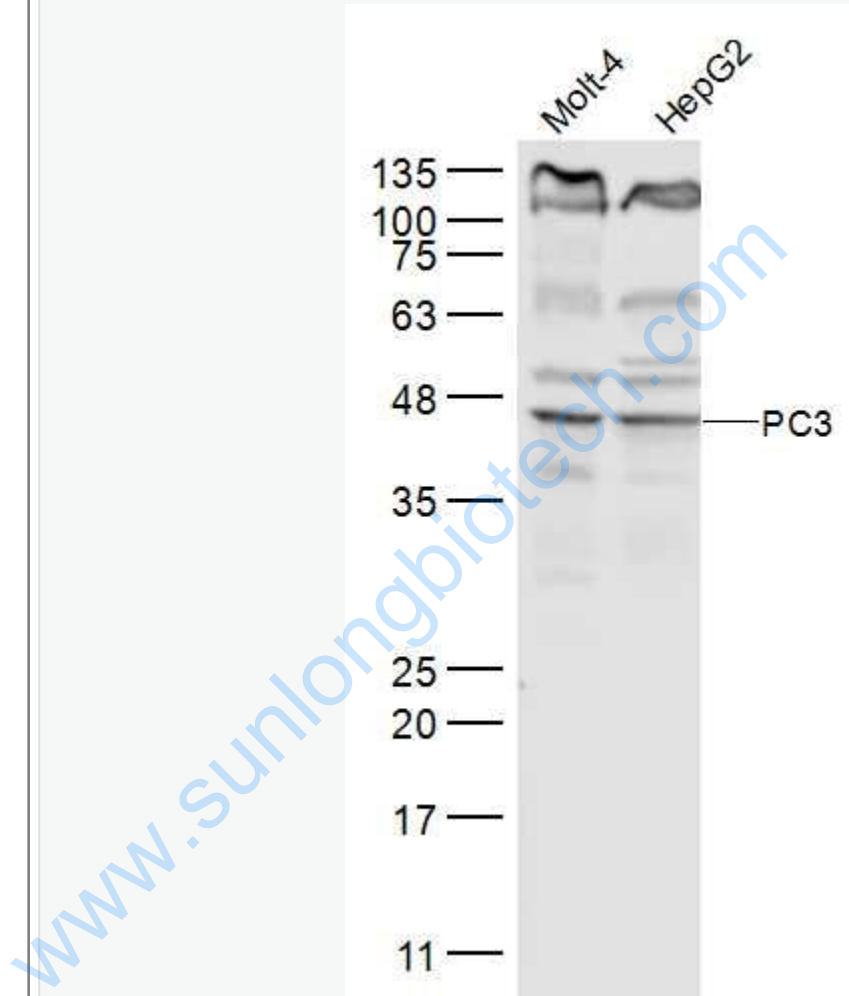
[Unigene: 98791](#) Human

[Unigene: 28521](#) Mouse

**Important Note:**

This product as supplied is intended for research use only, not for use in human, therapeutic or diagnostic applications.

Picture:



Sample:

Molt-4(Human) Cell Lysate at 30 ug

HepG2(Human) Cell Lysate at 30 ug

Primary: Anti-PC3 (SL19902R) at 1/300 dilution

Secondary: IRDye800CW Goat Anti-Rabbit IgG at 1/20000 dilution

Predicted band size: 42 kD

	Observed band size: 42 kD
--	---------------------------

[www.sunlongbiotech.com](http://www.sunlongbiotech.com)