



Rabbit Anti-PCTAIRE1 antibody

SL19916R

Product Name:	PCTAIRE1
Chinese Name:	周期素依赖性激酶PCTAIRE1抗体
Alias:	PCTAIRE-1; Cdk16; CDK16_HUMAN; Cell division protein kinase 16; Cyclin-dependent kinase 16; PCTAIRE; PCTAIRE protein kinase 1; PCTAIRE-motif protein kinase 1; PCTAIRE1; PCTGAIRE; PCTK1; Serine/threonine-protein kinase PCTAIRE-1.
Organism Species:	Rabbit
Clonality:	Polyclonal
React Species:	Human,Mouse,Rat,Dog,Pig,Cow,Horse,Rabbit,Sheep,
Applications:	WB=1:500-2000ELISA=1:500-1000IHC-P=1:400-800IHC-F=1:400-800ICC=1:100-500IF=1:100-500 (Paraffin sections need antigen repair) not yet tested in other applications. optimal dilutions/concentrations should be determined by the end user.
Molecular weight:	56kDa
Cellular localization:	cytoplasmic
Form:	Lyophilized or Liquid
Concentration:	1mg/ml
immunogen:	KLH conjugated synthetic peptide derived from human PCTAIRE1:61-160/496
Lsotype:	IgG
Purification:	affinity purified by Protein A
Storage Buffer:	0.01M TBS(pH7.4) with 1% BSA, 0.03% Proclin300 and 50% Glycerol.
Storage:	Store at -20 °C for one year. Avoid repeated freeze/thaw cycles. The lyophilized antibody is stable at room temperature for at least one month and for greater than a year when kept at -20°C. When reconstituted in sterile pH 7.4 0.01M PBS or diluent of antibody the antibody is stable for at least two weeks at 2-4 °C.
PubMed:	PubMed
Product Detail:	The protein encoded by this gene belongs to the cdc2/cdkx subfamily of the ser/thr family of protein kinases. It may play a role in signal transduction cascades in terminally differentiated cells; in exocytosis; and in transport of secretory cargo from the endoplasmic reticulum. This gene is thought to escape X inactivation. Alternative

splicing results in multiple transcript variants encoding different isoforms. [provided by RefSeq, Dec 2009]

Function:

May play a role in signal transduction cascades in terminally differentiated cells.

Subunit:

Found in a complex containing CABLES1, CDK17 and TDRD7. Interacts with YWHAH, YWHAQ and YWHAZ. Interacts with NSF. Identified in a complex with NSF, syntaxin-1, synaptotagmin, SYN1, SYP and CDK5R1 (By similarity). Interacts with BRSK2. Interacts with CCNY; this increases the CDK16 kinase activity.

Subcellular Location:

Cytoplasm. Cytoplasmic vesicle, secretory vesicle. Cell membrane; Peripheral membrane protein; Cytoplasmic side. Cell junction, synapse, synaptosome

Similarity:

Belongs to the protein kinase superfamily.
CMGC Ser/Thr protein kinase family. CDC2/CDKX subfamily.
Contains 1 protein kinase domain.

SWISS:

Q00536

Gene ID:

5127

Database links:

[Entrez Gene: 613810](#) Cow

[Entrez Gene: 5127](#) Human

[Entrez Gene: 18555](#) Mouse

[Omim: 311550](#) Human

[SwissProt: Q00536](#) Human

[SwissProt: Q04735](#) Mouse

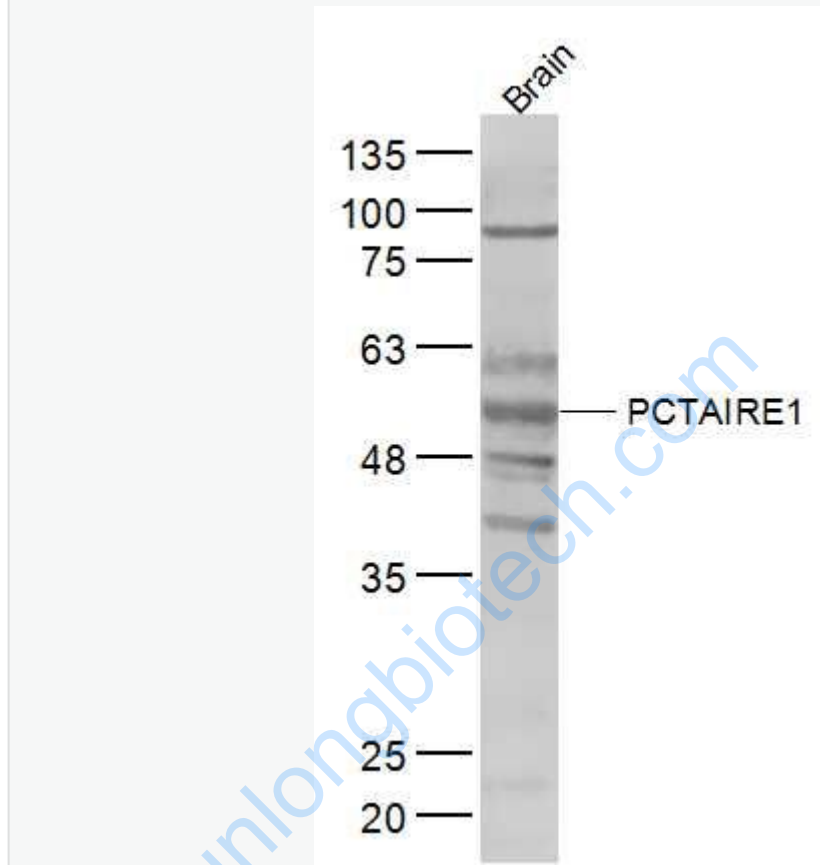
[Unigene: 496068](#) Human

[Unigene: 102574](#) Mouse

Important Note:

This product as supplied is intended for research use only, not for use in human, therapeutic or diagnostic applications.

Picture:



Sample:

Brain (Mouse) Lysate at 40 ug

Primary: Anti-PCTAIRE1 (SL19916R) at 1/300 dilution

Secondary: IRDye800CW Goat Anti-Rabbit IgG at 1/20000 dilution

Predicted band size: 56 kD

Observed band size: 56 kD