



Rabbit Anti-Intestinal alkaline phosphatase antibody

SL20013R

Product Name:	Intestinal alkaline phosphatase
Chinese Name:	肠道碱性磷酸酶抗体
Alias:	Alkaline phosphatase intestinal; alkaline phosphatase, intestinal; Alkaline phosphomonoesterase; ALPI; Glycerophosphatase; IAP; Intestinal alkaline phosphatase; Intestinal-type alkaline phosphatase; Kasahara isozyme; OTTHUMP00000164357; PPBI HUMAN.
Organism Species:	Rabbit
Clonality:	Polyclonal
React Species:	Human,
Applications:	ELISA=1:500-1000IHC-P=1:400-800IHC-F=1:400-800Flow-Cyt=1µg/TestICC=1:100-500IF=1:100-500 (Paraffin sections need antigen repair) not yet tested in other applications. optimal dilutions/concentrations should be determined by the end user.
Molecular weight:	53kDa
Cellular localization:	The cell membrane
Form:	Lyophilized or Liquid
Concentration:	1mg/ml
immunogen:	KLH conjugated synthetic peptide derived from human Intestinal alkaline phosphatase:351-450/528
Lsotype:	IgG
Purification:	affinity purified by Protein A
Storage Buffer:	0.01M TBS(pH7.4) with 1% BSA, 0.03% Proclin300 and 50% Glycerol.
Storage:	Store at -20 °C for one year. Avoid repeated freeze/thaw cycles. The lyophilized antibody is stable at room temperature for at least one month and for greater than a year when kept at -20°C. When reconstituted in sterile pH 7.4 0.01M PBS or diluent of antibody the antibody is stable for at least two weeks at 2-4 °C.
PubMed:	PubMed
Product Detail:	There are at least four distinct but related alkaline phosphatases: intestinal, placental,

placental-like, and liver/bone/kidney (tissue non-specific). The intestinal alkaline phosphatase gene encodes a digestive brush-border enzyme. This enzyme is upregulated during small intestinal epithelial cell differentiation. [provided by RefSeq, Jul 2008]

Subunit:

Homodimer.

Subcellular Location:

Cell membrane; Lipid-anchor, GPI-anchor.

Similarity:

Belongs to the alkaline phosphatase family.

SWISS:

P09923

Gene ID:

248

Database links:

[Entrez Gene: 248](#)Human

[Omin: 171740](#)Human

[SwissProt: P09923](#)Human

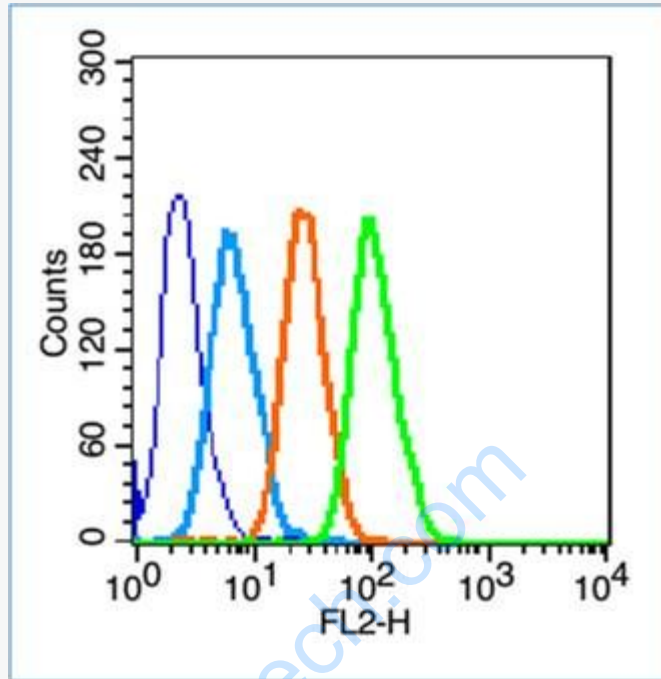
[Unigene: 284255](#)Human

[Unigene: 37009](#)Human

Important Note:

This product as supplied is intended for research use only, not for use in human, therapeutic or diagnostic applications.

Picture:



Blank control (blue line): Hep G2(fixed with 70% ethanol Overnight at 4°C).

Primary Antibody (green line): Rabbit Anti-Intestinal alkaline phosphatase antibody (SL20013R),Dilution: 1 μ g /10⁶ cells;

Isotype Control Antibody (orange line): Rabbit IgG .

Secondary Antibody (white blue line): Goat anti-rabbit IgG-PE,Dilution: 1 μ g /test.