



Rabbit Anti-Placental alkaline phosphatase (PLAP) antibody

SL20015R

| | |
|-------------------------------|---|
| Product Name: | Placental alkaline phosphatase (PLAP) |
| Chinese Name: | 胎盘碱性磷酸酶(PLAP)抗体 |
| Alias: | Alkaline phosphatase; Alkaline phosphatase placental; Alkaline phosphatase placental type; Alkaline phosphatase Regan isozyme; ALP; Alp1; ALPP; FLJ61142; Germ-cell alkaline phosphatase; nagao isozyme; OTTHUMP00000164354; PALP; Placental alkaline phosphatase 1; placental heat-stable alkaline phosphatase; placental type; PLAP; PLAP-1; PLAP1; PPB1 HUMAN. |
| Organism Species: | Rabbit |
| Clonality: | Polyclonal |
| React Species: | Human,Mouse, |
| Applications: | WB=1:500-2000ELISA=1:500-1000Flow-Cyt=1µg/Test not yet tested in other applications. optimal dilutions/concentrations should be determined by the end user. |
| Molecular weight: | 53kDa |
| Cellular localization: | The cell membrane |
| Form: | Lyophilized or Liquid |
| Concentration: | 1mg/ml |
| immunogen: | KLH conjugated synthetic peptide derived from human Placental alkaline phosphatase 1:41-140/535 |
| Lsotype: | IgG |
| Purification: | affinity purified by Protein A |
| Storage Buffer: | 0.01M TBS(pH7.4) with 1% BSA, 0.03% Proclin300 and 50% Glycerol. |
| Storage: | Store at -20 °C for one year. Avoid repeated freeze/thaw cycles. The lyophilized antibody is stable at room temperature for at least one month and for greater than a year when kept at -20°C. When reconstituted in sterile pH 7.4 0.01M PBS or diluent of antibody the antibody is stable for at least two weeks at 2-4 °C. |
| PubMed: | PubMed |
| Product Detail: | There are at least four distinct but related alkaline phosphatases: intestinal, placental, |

placental-like, and liver/bone/kidney (tissue non-specific). The first three are located together on chromosome 2 while the tissue non-specific form is located on chromosome 1. The product of this gene is a membrane bound glycosylated enzyme, also referred to as the heat stable form, that is expressed primarily in the placenta although it is closely related to the intestinal form of the enzyme as well as to the placental-like form. The coding sequence for this form of alkaline phosphatase is unique in that the 3' untranslated region contains multiple copies of an Alu family repeat. In addition, this gene is polymorphic and three common alleles (type 1, type 2 and type 3) for this form of alkaline phosphatase have been well characterized. [provided by RefSeq, Jul 2008]

Subunit:

Homodimer.

Subcellular Location:

Cell membrane; Lipid-anchor, GPI-anchor.

Tissue Specificity:

Trace amounts in the testis and thymus, and in elevated amounts in germ cell tumors.

Similarity:

Belongs to the alkaline phosphatase family.

SWISS:

P05187

Gene ID:

250

Database links:

[Entrez Gene: 250](#)Human

[Omir: 171800](#)Human

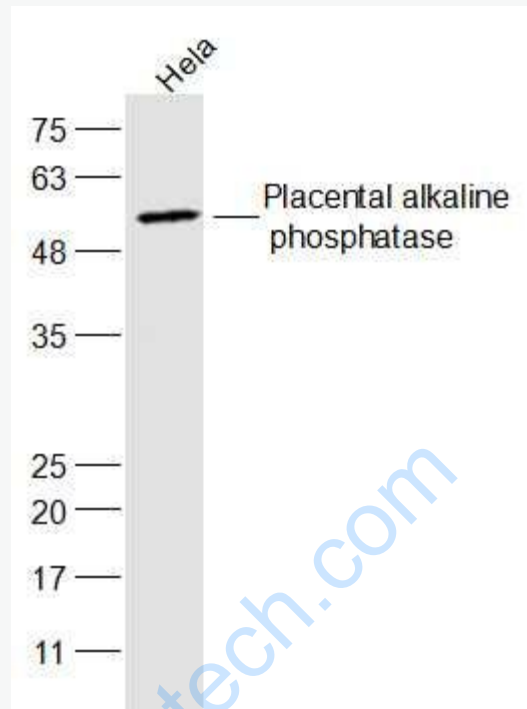
[SwissProt: P05187](#)Human

[Unigene: 284255](#)Human

Important Note:

This product as supplied is intended for research use only, not for use in human, therapeutic or diagnostic applications.

Picture:



Sample:

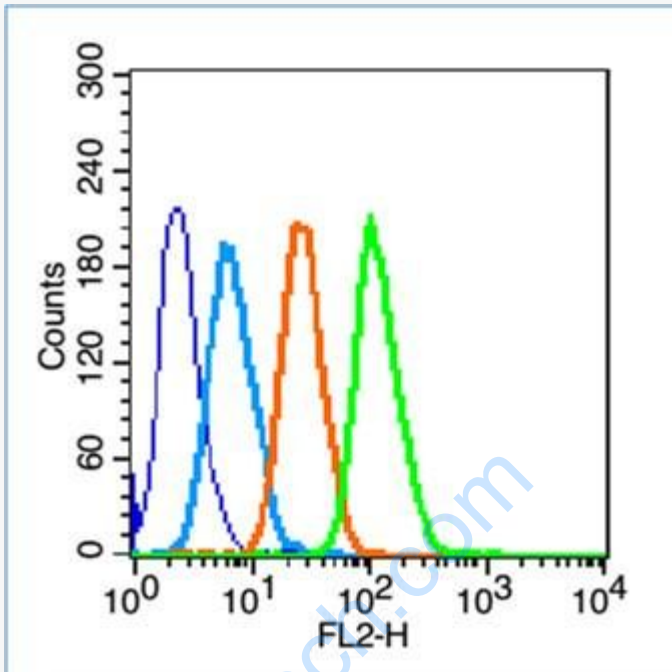
HeLa(Human) Cell Lysate at 30 ug

Primary: Anti-Placental alkaline phosphatase (SL20015R) at 1/300 dilution

Secondary: IRDye800CW Goat Anti-Rabbit IgG at 1/20000 dilution

Predicted band size: 53 kD

Observed band size: 53 kD



Blank control (blue line): Hep G2(fixed with 70% ethanol Overnight at 4°C).

Primary Antibody (green line): Rabbit Anti-Placental alkaline phosphatase antibody (SL20015R), Dilution: 1µg /10⁶ cells;

Isotype Control Antibody (orange line): Rabbit IgG .

Secondary Antibody (white blue line): Goat anti-rabbit IgG-PE, Dilution: 1µg /test.