

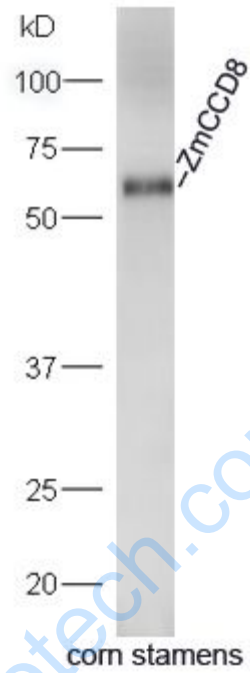


Rabbit Anti-ZmCCD8 antibody

SL20097R

Product Name:	ZmCCD8
Chinese Name:	类胡萝卜素裂解双加氧酶8抗体
Alias:	Carotenoid cleavage dioxygenase 8; ZmCCD8.
Organism Species:	Rabbit
Clonality:	Polyclonal
React Species:	Zea mays
Applications:	WB=1:500-2000ELISA=1:500-1000IHC-P=1:400-800IHC-F=1:400-800ICC=1:100-500IF=1:100-500 (Paraffin sections need antigen repair) not yet tested in other applications. optimal dilutions/concentrations should be determined by the end user.
Molecular weight:	63kDa
Form:	Lyophilized or Liquid
Concentration:	1mg/ml
immunogen:	KLH conjugated synthetic peptide derived from human ZmCCD8:501-572/572
Lsotype:	IgG
Purification:	affinity purified by Protein A
Storage Buffer:	0.01M TBS(pH7.4) with 1% BSA, 0.03% Proclin300 and 50% Glycerol.
Storage:	Store at -20 °C for one year. Avoid repeated freeze/thaw cycles. The lyophilized antibody is stable at room temperature for at least one month and for greater than a year when kept at -20°C. When reconstituted in sterile pH 7.4 0.01M PBS or diluent of antibody the antibody is stable for at least two weeks at 2-4 °C.
PubMed:	PubMed
Product Detail:	

Picture:



Protein: Corn stamens(Zea mays) lysate at 30ug;

Primary: rabbit Anti-ZmCCD8 (SL20097R) at 1:300;

Secondary: HRP conjugated Goat-Anti-rabbit IgG(SL20097R) at 1: 5000;

Predicted band size: 63 kD

Observed band size: 63 kD