



Rabbit Anti-PRPF4 antibody

SL20098R

| | |
|-------------------------------|---|
| Product Name: | PRPF4 |
| Chinese Name: | PRPF4蛋白抗体 |
| Alias: | HPRP4; HPRP4P; PRP4; PRP4 pre mRNA processing factor 4 homolog (yeast); PRP4/STK/WD splicing factor; Prp4p; U4/U6 small nuclear ribonucleoprotein Prp4; WD splicing factor Prp4; PRP4_HUMAN. |
| Organism Species: | Rabbit |
| Clonality: | Polyclonal |
| React Species: | Human,Mouse,Rat,Dog,Pig,Cow,Rabbit,Sheep, |
| Applications: | WB=1:500-2000ELISA=1:500-1000IHC-P=1:400-800IHC-F=1:400-800ICC=1:100-500IF=1:100-500 (Paraffin sections need antigen repair) not yet tested in other applications. optimal dilutions/concentrations should be determined by the end user. |
| Molecular weight: | 58kDa |
| Cellular localization: | The nucleus |
| Form: | Lyophilized or Liquid |
| Concentration: | 1mg/ml |
| immunogen: | KLH conjugated synthetic peptide derived from human PRPF4:431-522/522 |
| Lsotype: | IgG |
| Purification: | affinity purified by Protein A |
| Storage Buffer: | Preservative: 15mM Sodium Azide, Constituents: 1% BSA, 0.01M PBS, pH 7.4 |
| Storage: | Store at -20 °C for one year. Avoid repeated freeze/thaw cycles. The lyophilized antibody is stable at room temperature for at least one month and for greater than a year when kept at -20°C. When reconstituted in sterile pH 7.4 0.01M PBS or diluent of antibody the antibody is stable for at least two weeks at 2-4 °C. |
| PubMed: | PubMed |
| Product Detail: | Pre-mRNA splicing occurs in two sequential transesterification steps, and the protein encoded by this gene is thought to be involved in pre-mRNA splicing and in signal transduction. This protein belongs to a kinase family that includes serine/arginine-rich protein-specific kinases and cyclin-dependent kinases (CDKs). This protein is regarded as a CDK-like kinase (Clk) with homology to mitogen-activated protein kinases |

(MAPKs). [provided by RefSeq, Jul 2008]

Function:

Involved in pre-mRNA splicing.

Subunit:

Interacts directly with PRPF18, PPIH and PRPF3. Part of a heteromeric complex containing PPIH, PRPF3 and PRPF4 that is stable in the absence of RNA. This complex interacts with the U4/U5/U6 tri-snRNP complex.

Subcellular Location:

Nucleus speckle. Note=Colocalizes with spliceosomal snRNPs.

Similarity:

Contains 7 WD repeats.

SWISS:

Q13523

Gene ID:

8899

Database links:

[Entrez Gene: 8899](#)Human

[Entrez Gene: 19134](#)Mouse

[Entrez Gene: 291078](#)Rat

[Omim: 602338](#)Human

[SwissProt: Q08DZ2](#)Cow

[SwissProt: Q13523](#)Human

[SwissProt: Q61136](#)Mouse

[SwissProt: Q5RKH1](#)Rat

[Unigene: 159014](#)Human

[Unigene: 10027](#)Mouse

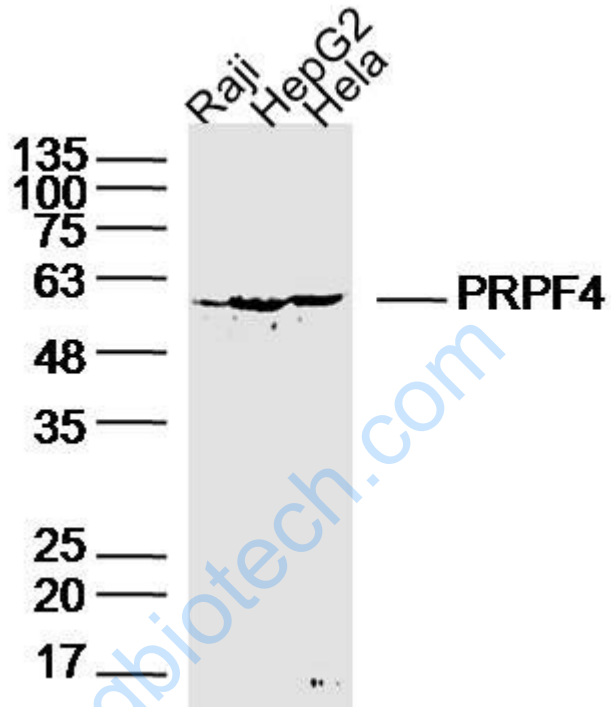
[Unigene: 482253](#)Mouse

[Unigene: 32654](#)Rat

Important Note:

This product as supplied is intended for research use only, not for use in human,

therapeutic or diagnostic applications.



Picture:

Sample:

Raji (Human) Cell Lysate at 40 ug

HepG2 (Human) Cell Lysate at 40 ug

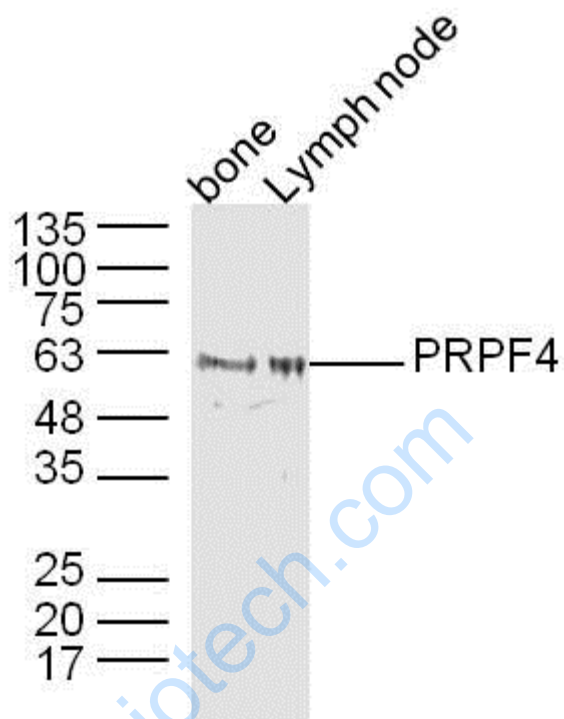
HeLa (Human) Cell Lysate at 40 ug

Primary: Anti-PRPF4(SL20098R) at 1/300 dilution

Secondary: IRDye800CW Goat Anti-Rabbit IgG at 1/20000 dilution

Predicted band size: 58kD

Observed band size: 58kD



Sample:

bone (mouse) Lysate at 40 ug

lymph node (mouse) Lysate at 40 ug

Primary: Anti-PRPF4(SL20098R) at 1/300 dilution

Secondary: IRDye800CW Goat Anti-Rabbit IgG at 1/20000 dilution

Predicted band size: 58 kD

Observed band size: 58 kD