



Rabbit Anti-ALPK3 antibody

SL20156R

Product Name:	ALPK3
Chinese Name:	α 蛋白激酶3抗体
Alias:	Alpha-protein kinase 3; ALPK3; ALPK3_HUMAN; KIAA1330; MAK; Muscle alpha-protein kinase.
Organism Species:	Rabbit
Clonality:	Polyclonal
React Species:	Human,Horse,
Applications:	ELISA=1:500-1000IHC-P=1:400-800IHC-F=1:400-800ICC=1:100-500IF=1:100-500 (Paraffin sections need antigen repair) not yet tested in other applications. optimal dilutions/concentrations should be determined by the end user.
Molecular weight:	201kDa
Cellular localization:	The nucleus Mitochondrion
Form:	Lyophilized or Liquid
Concentration:	1mg/ml
immunogen:	KLH conjugated synthetic peptide derived from human ALPK3:1821-1907/1907
Lsotype:	IgG
Purification:	affinity purified by Protein A
Storage Buffer:	Preservative: 15mM Sodium Azide, Constituents: 1% BSA, 0.01M PBS, pH 7.4
Storage:	Store at -20 °C for one year. Avoid repeated freeze/thaw cycles. The lyophilized antibody is stable at room temperature for at least one month and for greater than a year when kept at -20°C. When reconstituted in sterile pH 7.4 0.01M PBS or diluent of antibody the antibody is stable for at least two weeks at 2-4 °C.
PubMed:	PubMed
Product Detail:	ALPK3 (Alpha Kinase 3) is a Protein Coding gene. GO annotations related to this gene include transferase activity, transferring phosphorus-containing groups and protein serine/threonine kinase activity. An important paralog of this gene is ALPK2. Function: Kinase that recognizes phosphorylation sites in which the surrounding peptides have an

alpha-helical conformation. Plays a role in cardiomyocyte differentiation.

Subcellular Location:

Nucleus.

Similarity:

Belongs to the protein kinase superfamily. Alpha-type protein kinase family. ALPK subfamily.

Contains 1 alpha-type protein kinase domain.

Contains 1 Ig-like (immunoglobulin-like) domain.

SWISS:

Q96L96

Gene ID:

57538

Database links:

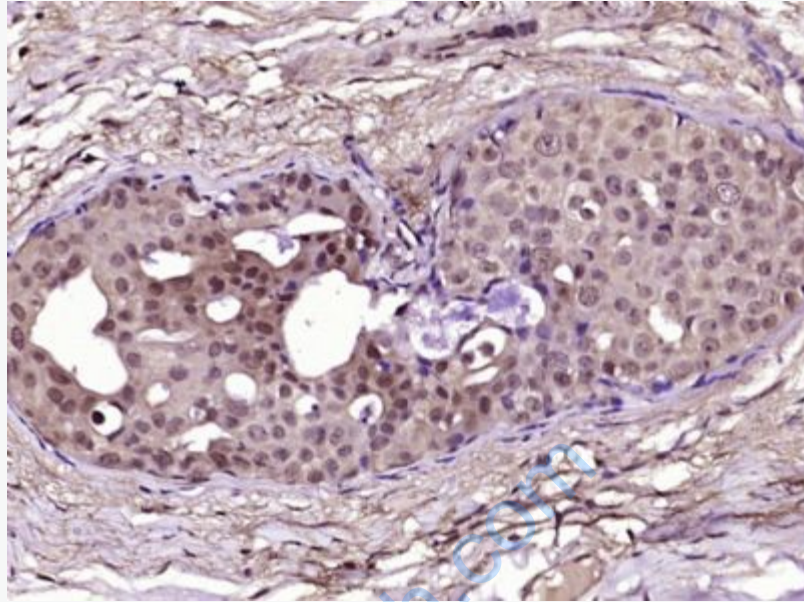
[Entrez Gene: 57538](#)Human

[SwissProt: Q96L96](#)Human

[Unigene: 459183](#)Human

Important Note:

This product as supplied is intended for research use only, not for use in human, therapeutic or diagnostic applications.



Picture:

Paraformaldehyde-fixed, paraffin embedded (Human breast carcinoma); Antigen retrieval by boiling in sodium citrate buffer (pH6.0) for 15min; Block endogenous peroxidase by 3% hydrogen peroxide for 20 minutes; Blocking buffer (normal goat serum) at 37°C for 30min; Antibody incubation with (ALPK3) Polyclonal Antibody, Unconjugated (SL20156R) at 1:400 overnight at 4°C, followed by operating according to SP Kit(Rabbit) (sp-0023) instructions and DAB staining.