



## Rabbit Anti-S100B antibody

SL2015R

<b>Product Name:</b>	S100B
<b>Chinese Name:</b>	S100B蛋白抗体
<b>Alias:</b>	NEF; Protein S100 B; Protein S100-B; S 100 calcium binding protein beta chain; S 100 protein beta chain; S 100 protein beta subunit; S-100 protein beta chain; S-100 protein subunit beta; S100; S100 calcium binding protein B; S100 calcium binding protein beta (neural); S100 calcium binding protein beta chain; S100 calcium-binding protein B; S100 protein beta chain; S100B HUMAN; S100beta.
<b>文献引用</b> <b>PubMed</b> :	<p><b>Specific References(1)</b>SL2015R has been referenced in 1 publications.</p> <p><b>[IF=2.94]</b>Zhang, Shuai-nan, et al. "Cerebral potential biomarkers discovery and metabolic pathways analysis of <math>\alpha</math>-synucleinopathies and the dual effects of Acanthopanax senticosus Harms on central nervous system through metabolomics analysis." Journal of ethnopharmacology (2015).<b>WB;Mouse.</b></p> <p><a href="#">PubMed:25660332</a></p>
<b>Organism Species:</b>	Rabbit
<b>Clonality:</b>	Polyclonal
<b>React Species:</b>	Human,Mouse,Rat,Chicken,Cow,Rabbit,
<b>Applications:</b>	ELISA=1:500-1000IHC-P=1:400-800IHC-F=1:400-800IF=1:100-500 (Paraffin sections need antigen repair) not yet tested in other applications. optimal dilutions/concentrations should be determined by the end user.
<b>Molecular weight:</b>	10kDa
<b>Cellular localization:</b>	The nucleuscytoplasmic
<b>Form:</b>	Lyophilized or Liquid
<b>Concentration:</b>	1mg/ml
<b>immunogen:</b>	KLH conjugated synthetic peptide derived from human S100B:31-92/92
<b>Lsotype:</b>	IgG
<b>Purification:</b>	affinity purified by Protein A

<b>Storage Buffer:</b>	0.01M TBS(pH7.4) with 1% BSA, 0.03% Proclin300 and 50% Glycerol.
<b>Storage:</b>	Store at -20 °C for one year. Avoid repeated freeze/thaw cycles. The lyophilized antibody is stable at room temperature for at least one month and for greater than a year when kept at -20°C. When reconstituted in sterile pH 7.4 0.01M PBS or diluent of antibody the antibody is stable for at least two weeks at 2-4 °C.
<b>PubMed:</b>	<a href="#">PubMed</a>
<b>Product Detail:</b>	<p>S100 beta is a member of the S100 family of proteins containing 2 EF-hand calcium binding motifs. S100 proteins are localized in the cytoplasm and/or nucleus of a wide range of cells, and involved in the regulation of a number of cellular processes such as cell cycle progression and differentiation. S100 genes include at least 13 members which are located as a cluster on chromosome 1q21; however, this gene is located at 21q22.3. This protein may function in neurite extension, proliferation of melanoma cells, stimulation of Ca<sup>2+</sup> fluxes, inhibition of PKC mediated phosphorylation, astrocytosis and axonal proliferation, and inhibition of microtubule assembly. Chromosomal rearrangements and altered expression of this gene have been implicated in several neurological, neoplastic, and other types of diseases, including Alzheimer's disease, Down's syndrome, epilepsy, amyotrophic lateral sclerosis, melanoma, and type I diabetes.</p> <p><b>Function:</b> Weakly binds calcium but binds zinc very tightly-distinct binding sites with different affinities exist for both ions on each monomer. Physiological concentrations of potassium ion antagonize the binding of both divalent cations, especially affecting high-affinity calcium-binding sites. Binds to and initiates the activation of STK38 by releasing autoinhibitory intramolecular interactions within the kinase. Interaction with AGER after myocardial infarction may play a role in myocyte apoptosis by activating ERK1/2 and p53/TP53 signaling.</p> <p><b>Subunit:</b> Dimer of either two alpha chains, or two beta chains, or one alpha and one beta chain. The S100B dimer binds two molecules of STK38 (By similarity). The S100B dimer interacts with two molecules of CAPZA1.</p> <p><b>Subcellular Location:</b> Cytoplasm. Nucleus.</p> <p><b>Tissue Specificity:</b> Although predominant among the water-soluble brain proteins, S100 is also found in a variety of other tissues.</p> <p><b>Similarity:</b> Belongs to the S-101 family. Contains 2 EF-hand domains.</p> <p><b>SWISS:</b> P04271</p>

**Gene ID:**  
6285

**Database links:**

[Entrez Gene: 6285](#) Human

[Entrez Gene: 20203](#) Mouse

[Entrez Gene: 25742](#) Rat

[Omim: 176990](#) Human

[SwissProt: P04271](#) Human

[SwissProt: P50114](#) Mouse

[SwissProt: P04631](#) Rat

[Unigene: 422181](#) Human

[Unigene: 235998](#) Mouse

[Unigene: 8937](#) Rat

**Important Note:**

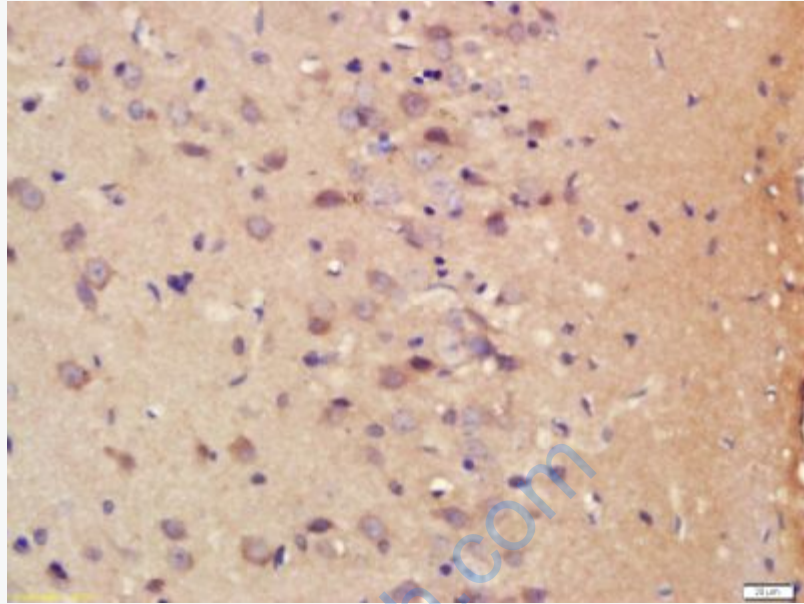
This product as supplied is intended for research use only, not for use in human, therapeutic or diagnostic applications.

**结构蛋白 (Structural Proteins)**

S100B是一组可溶性、相对低分子量、高酸性蛋白, 属神经胶质细胞特异性蛋白, 亦可存在于神经纤维中。在研究肠神经系统的形态特征及结构特征中, S100B有良好的表达功能。

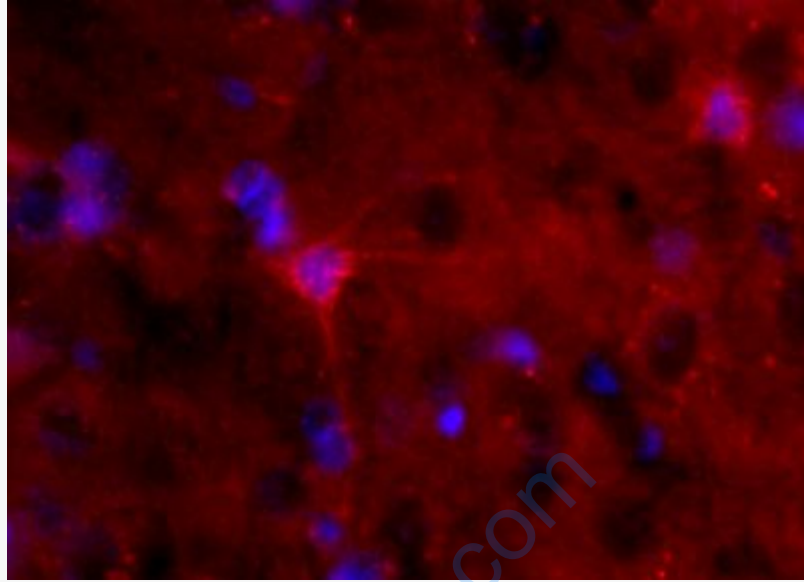
S100B蛋白其生理作用尚不清楚, 可能与细胞内钙离子媒介的调节作用有关。S100B蛋白可存在于神经鞘瘤, 成软骨细胞瘤、软骨肉瘤、骨肉瘤、神经胶质瘤、郎格罕斯细胞瘤、一些癌肿和黑素细胞Tumour等。

在免疫组化中, 除了恶性黑素瘤皮损, S100B蛋白还在良性黑素细胞痣中增加, 如: 蓝痣、普通后天痣、雀斑样痣、Spitz痣、气球状细胞痣、色素性梭形细胞痣和发育不良痣中表达。还有报道S100B蛋白的染色强度与Tumour细胞的黑素含量呈负相关。结缔组织增生性的或亲神经的黑素瘤不易染色。



**Picture:**

Tissue/cell: rat brain tissue; 4% Paraformaldehyde-fixed and paraffin-embedded;  
Antigen retrieval: citrate buffer ( 0.01M, pH 6.0 ), Boiling bathing for 15min; Block endogenous peroxidase by 3% Hydrogen peroxide for 30min; Blocking buffer (normal goat serum,C-0005) at 37°C for 20 min;  
Incubation: Anti-S100B Polyclonal Antibody, Unconjugated(SL2015R) 1:200, overnight at 4°C, followed by conjugation to the secondary antibody(SP-0023) and DAB(C-0010) staining



Tissue/cell: rat brain tissue;4% Paraformaldehyde-fixed and paraffin-embedded;  
Antigen retrieval: citrate buffer ( 0.01M, pH 6.0 ), Boiling bathing for 15min;  
Blocking buffer (normal goat serum,C-0005) at 37°C for 20 min;  
Incubation: Anti-S100B Polyclonal Antibody, Unconjugated(SL2015R) 1:200,  
overnight at 4°C; The secondary antibody was Goat Anti-Rabbit IgG, PE  
conjugated(SL2015R)used at 1:200 dilution for 40 minutes at 37°C.  
DAPI(5ug/ml,blue,C-0033) was used to stain the cell nuclei