




Rabbit Anti-Integrin Alpha V + Beta 1 antibody

SL2016R

Product Name:	Integrin Alpha V + Beta 1
Chinese Name:	整合素 α V β 1抗体
Alias:	fibronectin receptor alpha; ITGAV; CD51; DKFZp686A08142; MSK8; Msk 8; VNR; similar to Integrin alpha-V precursor; Vitronectin receptor subunit alpha; CD51 antigen; HGNC; Vitronectin receptor alpha polypeptide; Vitronectin receptor alpha polypeptide antigen CD51; VNRA.
文献引用  :	Specific References(1) SL2016R has been referenced in 1 publications. [IF=3.53] Hendesi H, Barbe MF, Safadi FF, Monroy MA, Popoff SN (2015) Integrin Mediated Adhesion of Osteoblasts to Connective Tissue Growth Factor (CTGF/CCN2) Induces Cytoskeleton Reorganization and Cell Differentiation. PLoS ONE 10(2): e0115325. Mouse. PubMed:25714841
Organism Species:	Rabbit
Clonality:	Polyclonal
React Species:	Human,Mouse,Rat,Dog,Pig,Cow,Horse,Sheep,
Applications:	WB=1:500-2000ELISA=1:500-1000IHC-P=1:400-800Flow-Cyt=1 μ g /test (Paraffin sections need antigen repair) not yet tested in other applications. optimal dilutions/concentrations should be determined by the end user.
Molecular weight:	114kDa
Cellular localization:	cytoplasmicSecretory protein
Form:	Lyophilized or Liquid
Concentration:	1mg/ml
immunogen:	KLH conjugated synthetic Mixed peptides 915-948/1048(human Integrin α V)+ 21-70/798(human Integrin β 1):
Lsotype:	IgG
Purification:	affinity purified by Protein A

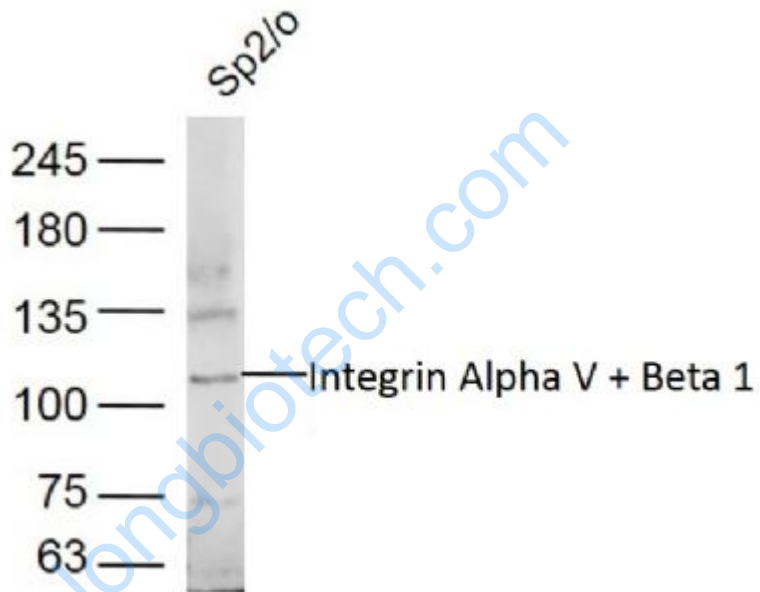
Storage Buffer:	0.01M TBS(pH7.4) with 1% BSA, 0.03% Proclin300 and 50% Glycerol.
Storage:	Store at -20 °C for one year. Avoid repeated freeze/thaw cycles. The lyophilized antibody is stable at room temperature for at least one month and for greater than a year when kept at -20°C. When reconstituted in sterile pH 7.4 0.01M PBS or diluent of antibody the antibody is stable for at least two weeks at 2-4 °C.
PubMed:	PubMed
Product Detail:	<p>Integrins are heterodimeric proteins made up of alpha and beta subunits. At least 18 alpha and 8 beta subunits have been described in mammals. Integrin family members are membrane receptors involved in cell adhesion and recognition in a variety of processes including embryogenesis, hemostasis, tissue repair, immune response and metastatic diffusion of tumor cells.</p> <p>Integrin alpha 5 belongs to the integrin alpha chain family. It contains seven FG-GAP repeats.</p> <p>Integrin beta 1 belongs to the integrin beta chain family. It contains one VWFA domain. Integrin alpha-5/beta-1 is a receptor for fibronectin and fibrinogen. It recognizes the sequence R-G-D in its ligands. In case of HIV-1 infection, the interaction with extracellular viral Tat protein seems to enhance angiogenesis in Kaposi's sarcoma lesions.</p> <p>Function: The alpha-V integrins are receptors for vitronectin, cytotactin, fibronectin, fibrinogen, laminin, matrix metalloproteinase-2, osteopontin, osteomodulin, prothrombin, thrombospondin and vWF. They recognize the sequence R-G-D in a wide array of ligands. In case of HIV-1 infection, the interaction with extracellular viral Tat protein seems to enhance angiogenesis in Kaposi's sarcoma lesions.</p> <p>Subcellular Location: Membrane.</p> <p>Similarity: Belongs to the integrin alpha chain family. Contains 7 FG-GAP repeats.</p> <p>SWISS: P06756</p> <p>Gene ID: 3685</p> <p>Database links:</p> <p>Entrez Gene: 3685 Human</p> <p>Omim: 193210 Human</p> <p>SwissProt: P06756 Human</p>

[Unigene: 436873](#) Human

Important Note:

This product as supplied is intended for research use only, not for use in human, therapeutic or diagnostic applications.

Picture:



Sample:

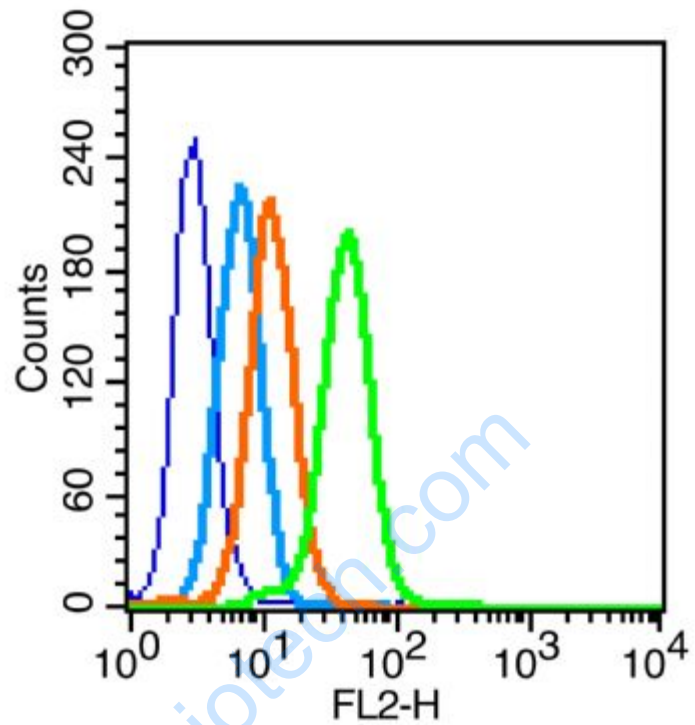
Sp2/O (Mouse) Lysate at 30 ug

Primary: Anti-Integrin Alpha V + Beta 1 (SL2016R) at 1/300 dilution

Secondary: IRDye800CW Goat Anti-Rabbit IgG at 1/20000 dilution

Predicted band size: 114 kD

Observed band size: 114 kD



Blank control (blue line): MCF7 (fixed with 70% methanol overnight at 4°C).

Primary Antibody (green line): Rabbit Anti-Integrin Alpha V + Beta 1 antibody (SL2016R), Dilution: 1µg /10⁶ cells;

Isotype Control Antibody (orange line): Rabbit IgG .

Secondary Antibody (white blue line): Goat anti-rabbit IgG-PE, Dilution: 1µg /test.