



Rabbit Anti-phospho-KLF5 (Ser275) antibody

SL2020R

Product Name:	phospho-KLF5 (Ser275)
Chinese Name:	磷酸化KLF5抗体
Alias:	KLF5 (phospho Ser275); KLF5 (phospho S275); Klf5; CKLF; Krueppel-like factor 5; Intestinal-enriched krueppel-like factor; Transcription factor BTEB2; Basic transcription element-binding protein 2; BTE-binding protein 2; Krueppel-like factor 5; KLF5; basic transcription element-binding protein 2;BTEB2; intestine enriched krüppel-like factor; IKLF; Kruppel like factor 5; Transcription factor BTEB 2; Transcription factor BTEB2; KLF5 HUMAN.
Organism Species:	Rabbit
Clonality:	Polyclonal
React Species:	Human,Mouse,Rat,Dog,Pig,Cow,Horse,Rabbit,
Applications:	WB=1:500-2000ELISA=1:500-1000IHC-P=1:400-800IHC-F=1:400-800IF=1:100-500 (Paraffin sections need antigen repair) not yet tested in other applications. optimal dilutions/concentrations should be determined by the end user.
Molecular weight:	50kDa
Cellular localization:	The nucleus
Form:	Lyophilized or Liquid
Concentration:	1mg/ml
immunogen:	KLH conjugated Synthesised phosphopeptide derived from human Klf5 around the phosphorylation site of Ser275:PP(p-S)EP
Lsotype:	IgG
Purification:	affinity purified by Protein A
Storage Buffer:	0.01M TBS(pH7.4) with 1% BSA, 0.03% Proclin300 and 50% Glycerol.
Storage:	Store at -20 °C for one year. Avoid repeated freeze/thaw cycles. The lyophilized antibody is stable at room temperature for at least one month and for greater than a year when kept at -20°C. When reconstituted in sterile pH 7.4 0.01M PBS or diluent of antibody the antibody is stable for at least two weeks at 2-4 °C.
PubMed:	PubMed

Krüppel-like factors (KLFs) zinc finger-containing transcription factors with regulatory functions in cell growth, proliferation, differentiation, and embryogenesis. KLF5, (also known as BTEB2 and IKLF), is essential for mouse embryo development. KLF5 activates many genes during cardiovascular remodeling, including PDGFa/b, Egr-1, PAI-1, iNOS, and VEGF receptors, making KLF a potential therapeutic target for cardiovascular disease. KLF5 also plays a role in angiogenesis and in development of several tumor types including breast, prostate, bladder, colon, esophagus, and skin. KLF5 is closely related to other of the KLF family members. However, KLF5 and KLF4 exhibit opposite effects on regulation of gene transcription, despite binding to similar, if not identical, cis-acting DNA sequences. In addition, KLF4 and 5 exert contrasting effects on cell proliferation in many instances; while KLF4 is an inhibitor of cell growth, KLF5 stimulates proliferation. KLF5 protein is enriched in intestinal tissue.

Function:

Transcription factor that binds to GC box promoter elements. Activates the transcription of these genes.

Subunit:

Interacts with WWP1.

Subcellular Location:

Nucleus.

Tissue Specificity:

Expressed only in testis and placenta.

Post-translational modifications:

Ubiquitinated. Polyubiquitination involves WWP1 and leads to proteasomal degradation of this protein.

Similarity:

Belongs to the krueppel C2H2-type zinc-finger protein family.
Contains 3 C2H2-type zinc fingers.

SWISS:

Q13887

Gene ID:

688

Database links:

[Entrez Gene: 535702](#)Cow

[Entrez Gene: 688](#)Human

[Entrez Gene: 12224](#)Mouse

Product Detail:

[Entrez Gene: 100038005](#)Pig

[Entrez Gene: 84410](#)Rat

[Omim: 602903](#)Human

[SwissProt: Q13887](#)Human

[SwissProt: Q9Z0Z7](#)Mouse

[Unigene: 508234](#)Human

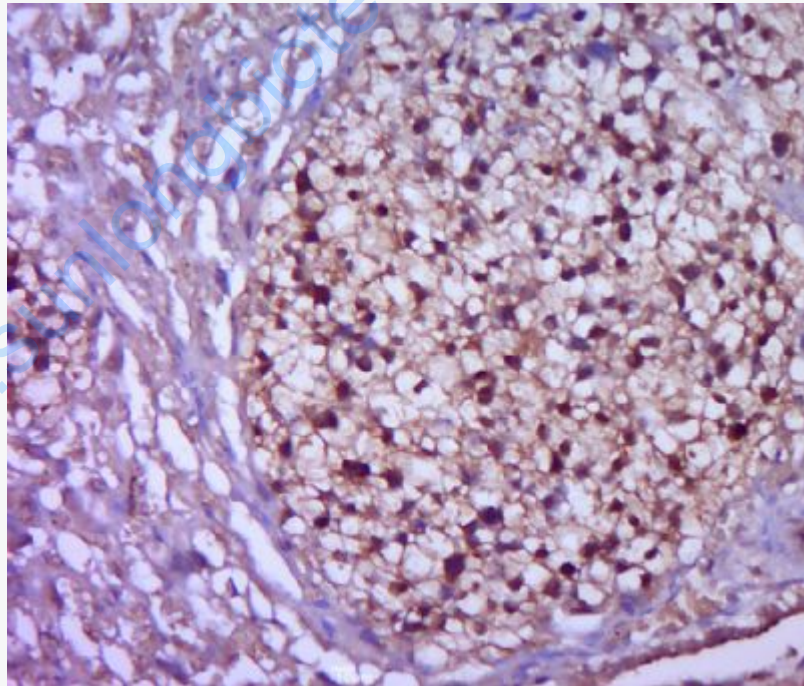
[Unigene: 30262](#)Mouse

[Unigene: 8954](#)Rat

Important Note:

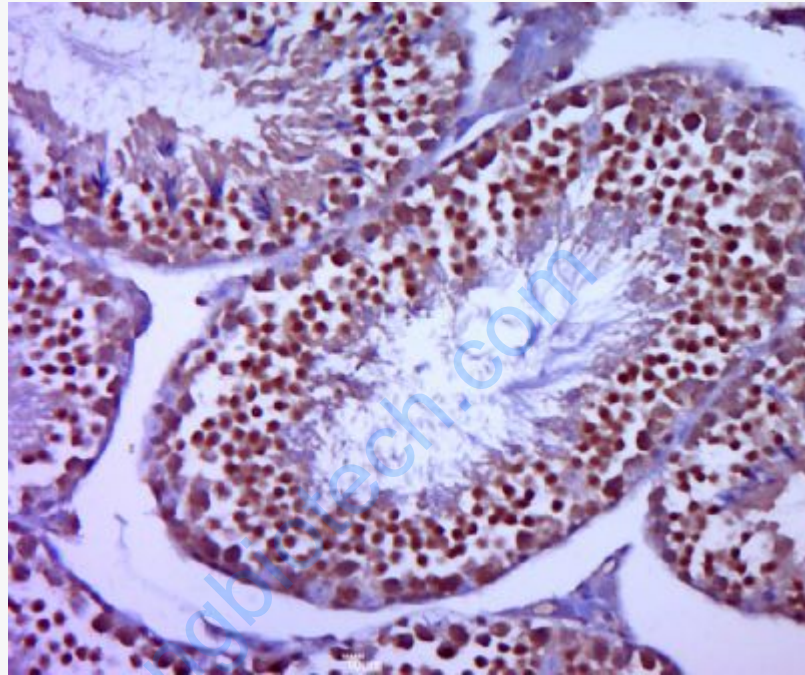
This product as supplied is intended for research use only, not for use in human, therapeutic or diagnostic applications.

Picture:



Paraformaldehyde-fixed, paraffin embedded (mouse placenta tissue); Antigen retrieval by boiling in sodium citrate buffer (pH6.0) for 15min; Block endogenous peroxidase by 3% hydrogen peroxide for 20 minutes; Blocking buffer (normal goat serum) at 37°C for 30min; Antibody incubation with (p-KLF5(Ser275)) Polyclonal

Antibody, Unconjugated (SL2020R) at 1:400 overnight at 4°C, followed by a conjugated secondary (sp-0023) for 20 minutes and DAB staining.



Paraformaldehyde-fixed, paraffin embedded (mouse testis tissue); Antigen retrieval by boiling in sodium citrate buffer (pH6.0) for 15min; Block endogenous peroxidase by 3% hydrogen peroxide for 20 minutes; Blocking buffer (normal goat serum) at 37°C for 30min; Antibody incubation with (p-KLF5(Ser275)) Polyclonal Antibody, Unconjugated (SL2020R) at 1:400 overnight at 4°C, followed by a conjugated secondary (sp-0023) for 20 minutes and DAB staining.