



## Rabbit Anti-Musashi 1 antibody

SL20241R

<b>Product Name:</b>	Musashi 1
<b>Chinese Name:</b>	神经Stem cellsRNABinding proteinMusashi1抗体
<b>Alias:</b>	Musashi 1 / Msi1; Msi 1; Msi1; Msi-1; MS11H_HUMAN; Musashi homolog 1; Musashi-1; Musashi1; RNA binding protein Musashi homolog 1; RNA-binding protein Musashi homolog 1.
<b>Organism Species:</b>	Rabbit
<b>Clonality:</b>	Polyclonal
<b>React Species:</b>	Human,Mouse,Rat,Pig,Horse,Rabbit,
<b>Applications:</b>	ELISA=1:500-1000IHC-P=1:400-800IHC-F=1:400-800ICC=1:100-500IF=1:100-500 (Paraffin sections need antigen repair) not yet tested in other applications. optimal dilutions/concentrations should be determined by the end user.
<b>Molecular weight:</b>	39kDa
<b>Cellular localization:</b>	The nucleuscytoplasmic
<b>Form:</b>	Lyophilized or Liquid
<b>Concentration:</b>	1mg/ml
<b>immunogen:</b>	KLH conjugated synthetic peptide derived from human Musashi 1:151-250/362
<b>Lsotype:</b>	IgG
<b>Purification:</b>	affinity purified by Protein A
<b>Storage Buffer:</b>	0.01M TBS(pH7.4) with 1% BSA, 0.03% Proclin300 and 50% Glycerol.
<b>Storage:</b>	Store at -20 °C for one year. Avoid repeated freeze/thaw cycles. The lyophilized antibody is stable at room temperature for at least one month and for greater than a year when kept at -20°C. When reconstituted in sterile pH 7.4 0.01M PBS or diluent of antibody the antibody is stable for at least two weeks at 2-4 °C.
<b>PubMed:</b>	<a href="#">PubMed</a>
<b>Product Detail:</b>	Musashi1 (Msi1) is an RNA-binding protein expressed in neural progenitor cells and neural stem cells. Msi1 is the mammalian homolog of Drosophila Musashi. The gene encoding human Msi1 encodes a 362 amino acid protein. In murine embryonic neural progenitor cells, Msi1 localizes to the cytoplasm and is downregulated during differentiation. Msi1 binds to NUMB, which encodes a membrane-associated antagonist

of Notch signaling. Msi1 appears to function in the proliferation and maintenance of stem cell populations of the central nervous system. In addition to its usefulness as a marker for neural progenitor cells in normal human brains, Msi1 is also a marker for human gliomas. In rats, Msi1 is expressed in Sertoli cells of the testis and granulosa cells of the ovary.

**Function:**

RNA binding protein that regulates the expression of target mRNAs at the translation level. Regulates expression of the NOTCH1 antagonist NUMB. Binds RNA containing the sequence 5'-GUUAGUUAGUUAGUU-3' and other sequences containing the pattern 5'-[GA]U(1-3)AGU-3'. May play a role in the proliferation and maintenance of stem cells in the central nervous system.

**Subcellular Location:**

Cytoplasm. Nucleus.

**Tissue Specificity:**

Detected in fetal kidney, brain, liver and lung, and in adult brain and pancreas. Detected in hepatoma cell lines.

**Similarity:**

Belongs to the Musashi family.  
Contains 2 RRM (RNA recognition motif) domains.

**SWISS:**

O43347

**Gene ID:**

4440

**Database links:**

[Entrez Gene: 4440Human](#)

[Entrez Gene: 17690Mouse](#)

[Entrez Gene: 259272Rat](#)

[Omim: 603328Human](#)

[SwissProt: O43347Human](#)

[SwissProt: Q61474Mouse](#)

[SwissProt: Q8K3P4Rat](#)

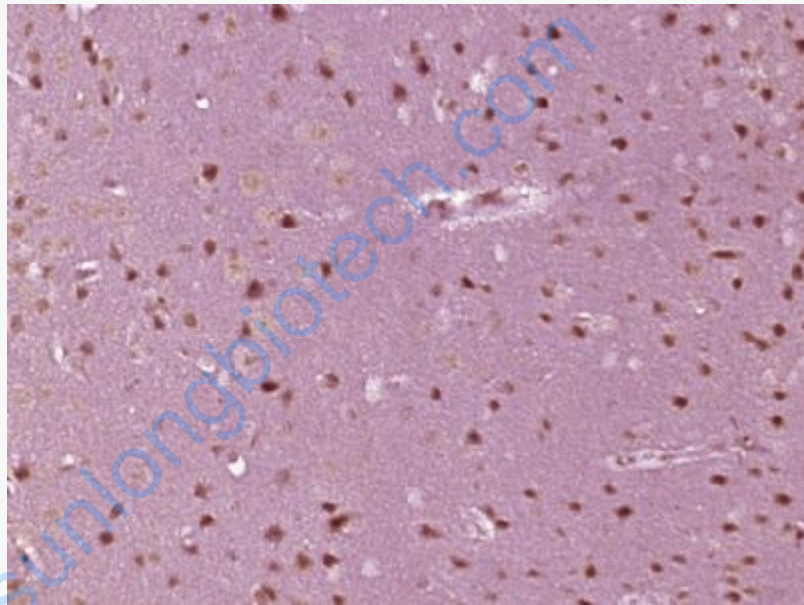
[Unigene: 158311Human](#)

[Unigene: 5077Mouse](#)

[Unigene: 162146Rat](#)

**Important Note:**

This product as supplied is intended for research use only, not for use in human, therapeutic or diagnostic applications.



**Picture:**

Paraformaldehyde-fixed, paraffin embedded (mouse brain tissue); Antigen retrieval by boiling in sodium citrate buffer (pH6.0) for 15min; Block endogenous peroxidase by 3% hydrogen peroxide for 20 minutes; Blocking buffer (normal goat serum) at 37°C for 30min; Antibody incubation with (Musashi 1) Polyclonal Antibody, Unconjugated (SL20241R) at 1:400 overnight at 4°C, followed by operating according to SP Kit(Rabbit) (sp-0023) instructions and DAB staining.