



## Rabbit Anti-MAP1A antibody

SL20255R

<b>Product Name:</b>	MAP1A
<b>Chinese Name:</b>	微管相关蛋白1A抗体
<b>Alias:</b>	MAP 1A; MAP-1A; MTAP1A; MAP 1L; MAP1L; MAP1A heavy chain; Map1a; MAP1A_HUMAN; Microtubule associated protein 1 like; Microtubule Associated Protein 1A; Microtubule-associated protein 1A; MTAP1A; Proliferation related protein p80; Proliferation-related protein p80; A1853608; Map1a; moth1; Mtap-1; Mtap1.
<b>Organism Species:</b>	Rabbit
<b>Clonality:</b>	Polyclonal
<b>React Species:</b>	Human,Mouse,Rat,Cow,Horse,Sheep,
<b>Applications:</b>	ELISA=1:500-1000IHC-P=1:400-800IHC-F=1:400-800ICC=1:100-500IF=1:100-500 (Paraffin sections need antigen repair) not yet tested in other applications. optimal dilutions/concentrations should be determined by the end user.
<b>Molecular weight:</b>	326kDa
<b>Cellular localization:</b>	cytoplasmic
<b>Form:</b>	Lyophilized or Liquid
<b>Concentration:</b>	1mg/ml
<b>immunogen:</b>	KLH conjugated synthetic peptide derived from human MAP1A:2531-2630/2803
<b>Lsotype:</b>	IgG
<b>Purification:</b>	affinity purified by Protein A
<b>Storage Buffer:</b>	Preservative: 15mM Sodium Azide, Constituents: 1% BSA, 0.01M PBS, pH 7.4
<b>Storage:</b>	Store at -20 °C for one year. Avoid repeated freeze/thaw cycles. The lyophilized antibody is stable at room temperature for at least one month and for greater than a year when kept at -20°C. When reconstituted in sterile pH 7.4 0.01M PBS or diluent of antibody the antibody is stable for at least two weeks at 2-4 °C.
<b>PubMed:</b>	<a href="#">PubMed</a>
<b>Product Detail:</b>	This gene encodes a protein that belongs to the microtubule-associated protein family. The proteins of this family are thought to be involved in microtubule assembly, which is an essential step in neurogenesis. The product of this gene is a precursor polypeptide that presumably undergoes proteolytic processing to generate the final MAP1A heavy chain

and LC2 light chain. Expression of this gene is almost exclusively in the brain. Studies of the rat microtubule-associated protein 1A gene suggested a role in early events of spinal cord development. [provided by RefSeq, Jul 2008]

**Function:**

Structural protein involved in the filamentous cross-bridging between microtubules and other skeletal elements.

**Subunit:**

3 different light chains, LC1, LC2 and LC3, can associate with MAP1A and MAP1B proteins. Interacts with TIAM2. Interacts with guanylate kinase-like domain of DLG1, DLG2, DLG4. Binds to CSNK1D.

**Subcellular Location:**

Cytoplasm, cytoskeleton (Probable).

**Tissue Specificity:**

Brain

**Post-translational modifications:**

Phosphorylated by CSNK1D.

LC2 is generated from MAP1A by proteolytic processing.

**Similarity:**

Belongs to the MAP1 family.

**SWISS:**

P78559

**Gene ID:**

4130

**Database links:**

[Entrez Gene: 4130](#)Human

[Entrez Gene: 17754](#)Mouse

[Entrez Gene: 25152](#)Rat

[Omim: 600178](#)Human

[SwissProt: P78559](#)Human

[SwissProt: Q9QYR6](#)Mouse

[SwissProt: P34926](#)Rat

[Unigene: 194301](#)Human

[Unigene: 619338](#)Human

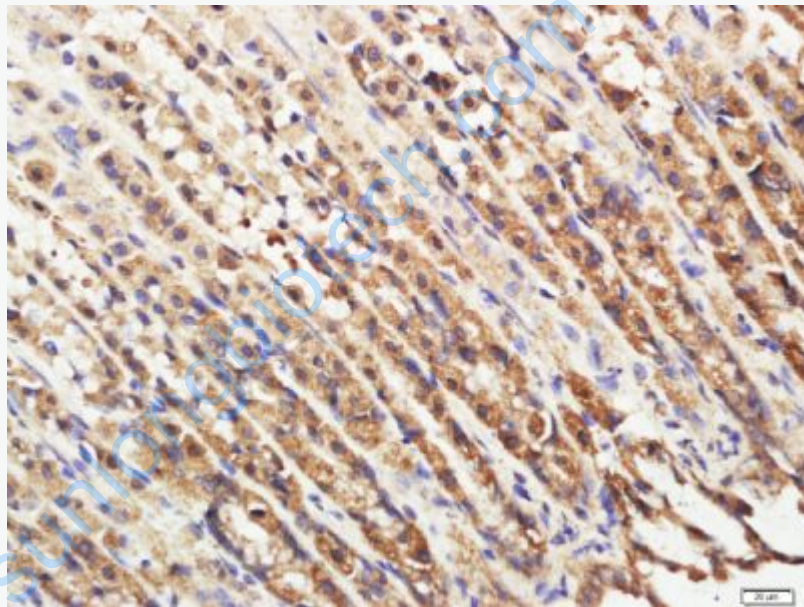
[Unigene: 36501](#)Mouse

[Unigene: 11402](#)Rat

[Unigene: 41412](#)Rat

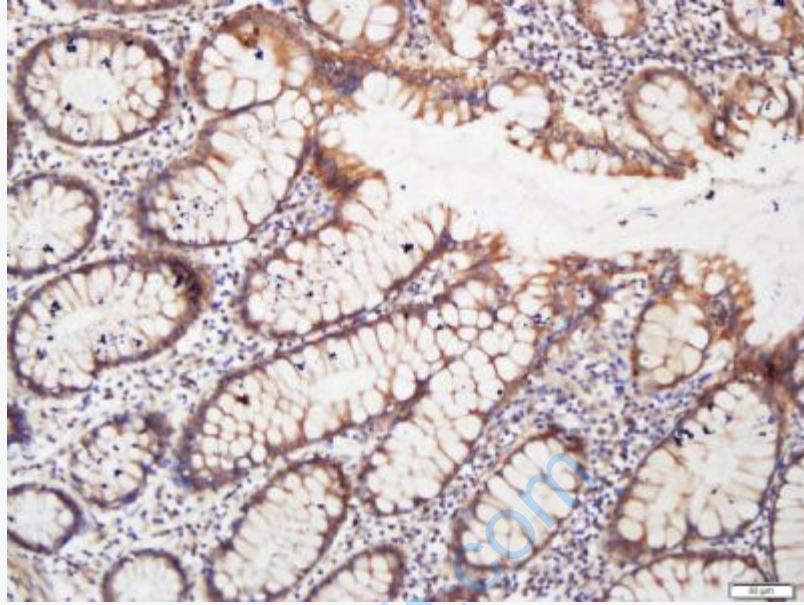
**Important Note:**

This product as supplied is intended for research use only, not for use in human, therapeutic or diagnostic applications.

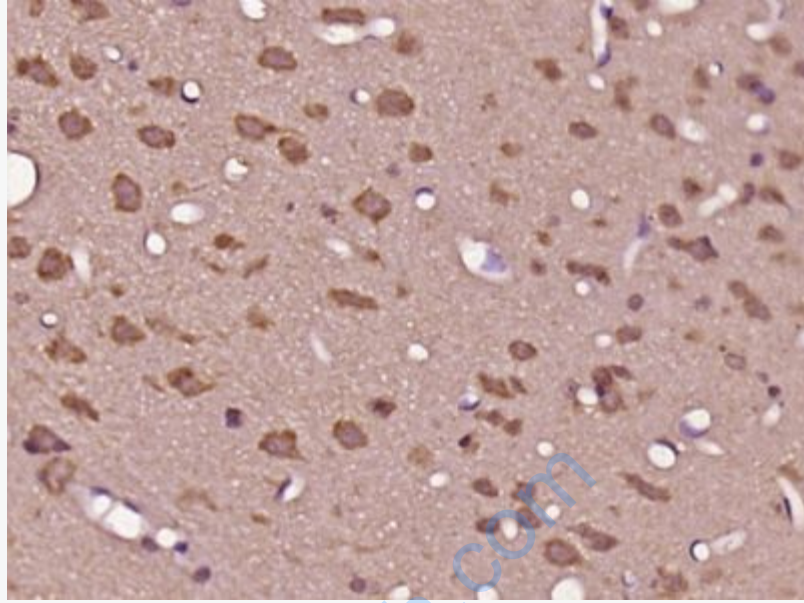


**Picture:**

Paraformaldehyde-fixed, paraffin embedded (rat stomach); Antigen retrieval by boiling in sodium citrate buffer (pH6.0) for 15min; Block endogenous peroxidase by 3% hydrogen peroxide for 20 minutes; Blocking buffer (normal goat serum) at 37°C for 30min; Antibody incubation with (MAP1A) Polyclonal Antibody, Unconjugated (SL20255R) at 1:400 overnight at 4°C, followed by a conjugated secondary (sp-0023) for 20 minutes and DAB staining.



Paraformaldehyde-fixed, paraffin embedded (human colon cancer); Antigen retrieval by boiling in sodium citrate buffer (pH6.0) for 15min; Block endogenous peroxidase by 3% hydrogen peroxide for 20 minutes; Blocking buffer (normal goat serum) at 37°C for 30min; Antibody incubation with (MAP1A) Polyclonal Antibody, Unconjugated (SL20255R) at 1:400 overnight at 4°C, followed by a conjugated secondary (sp-0023) for 20 minutes and DAB staining.



Paraformaldehyde-fixed, paraffin embedded (Rat brain); Antigen retrieval by boiling in sodium citrate buffer (pH6.0) for 15min; Block endogenous peroxidase by 3% hydrogen peroxide for 20 minutes; Blocking buffer (normal goat serum) at 37°C for 30min; Antibody incubation with (MAP1A) Polyclonal Antibody, Unconjugated (SL20255R) at 1:400 overnight at 4°C, followed by operating according to SP Kit(Rabbit) (sp-0023) instructions and DAB staining.