



## Rabbit Anti-Pescadillo antibody

SL20263R

<b>Product Name:</b>	Pescadillo
<b>Chinese Name:</b>	Pescadillo抗体
<b>Alias:</b>	FLJ43790; Homo sapiens pescadillo mRNA complete cds; PES 1; PES; pes1; PESC_HUMAN; Pescadillo (zebrafish) homolog 1 containing BRCT domain; Pescadillo homolog 1; Pescadillo homolog 1 containing BRCT domain (zebrafish); Pescadillo homolog; Pescadillo ribosomal biogenesis factor 1.
<b>Organism Species:</b>	Rabbit
<b>Clonality:</b>	Polyclonal
<b>React Species:</b>	Human,Mouse,Rat,Pig,Cow,Rabbit,Sheep,
<b>Applications:</b>	WB=1:500-2000ELISA=1:500-1000 not yet tested in other applications. optimal dilutions/concentrations should be determined by the end user.
<b>Molecular weight:</b>	68kDa
<b>Cellular localization:</b>	The nucleus
<b>Form:</b>	Lyophilized or Liquid
<b>Concentration:</b>	1mg/ml
<b>immunogen:</b>	KLH conjugated synthetic peptide derived from human Pescadillo:21-120/588
<b>Lsotype:</b>	IgG
<b>Purification:</b>	affinity purified by Protein A
<b>Storage Buffer:</b>	Preservative: 15mM Sodium Azide, Constituents: 1% BSA, 0.01M PBS, pH 7.4
<b>Storage:</b>	Store at -20 °C for one year. Avoid repeated freeze/thaw cycles. The lyophilized antibody is stable at room temperature for at least one month and for greater than a year when kept at -20°C. When reconstituted in sterile pH 7.4 0.01M PBS or diluent of antibody the antibody is stable for at least two weeks at 2-4 °C.
<b>PubMed:</b>	<a href="#">PubMed</a>
<b>Product Detail:</b>	Pescadillo may play a crucial role in cell proliferation and may be necessary for oncogenic transformation and tumor progression. The protein is abnormally elevated in malignant tumors of astrocytic origin. It is a strongly conserved gene containing a BRCT domain that is essential for the activity of this gene product.

**Function:**

Component of the PeBoW complex, which is required for maturation of 28S and 5.8S ribosomal RNAs and formation of the 60S ribosome.

**Subunit:**

Interacts with IRS1 and UBTF. May interact with MAP1B (By similarity). Component of the PeBoW complex, composed of BOP1, PES1 and WDR12. Within the PeBoW complex BOP1 interacts directly with PES1 and WDR12. The PeBoW complex also associates with the 66S pre-ribosome.

**Subcellular Location:**

Nucleus, nucleolus. Nucleus, nucleoplasm. Chromosome. Note=Appears to localize to the periphery of metaphase chromosomes during mitosis and to the prenucleolar bodies that form in mitotic cells prior to the actual nucleoli.

**Tissue Specificity:**

Significant levels are detected in a variety of cancer cell lines, including glioblastoma, breast carcinoma, colon carcinoma and cervical carcinoma cells. Levels are abnormally elevated in malignant tumors of astrocytic origin.

**Post-translational modifications:**

Sumoylated.

**Similarity:**

Belongs to the pescadillo family.  
Contains 1 BRCT domain.

**SWISS:**

O00541

**Gene ID:**

23481

**Database links:**

[Entrez Gene: 23481](#)Human

[Entrez Gene: 64934](#)Mouse

[Entrez Gene: 289740](#)Rat

[Omim: 605819](#)Human

[SwissProt: O00541](#)Human

[SwissProt: Q5SQ20](#)Mouse

[SwissProt: Q9EQ61](#)Mouse

[SwissProt: Q3B8N8](#)Rat

[Unigene: 517543](#)Human

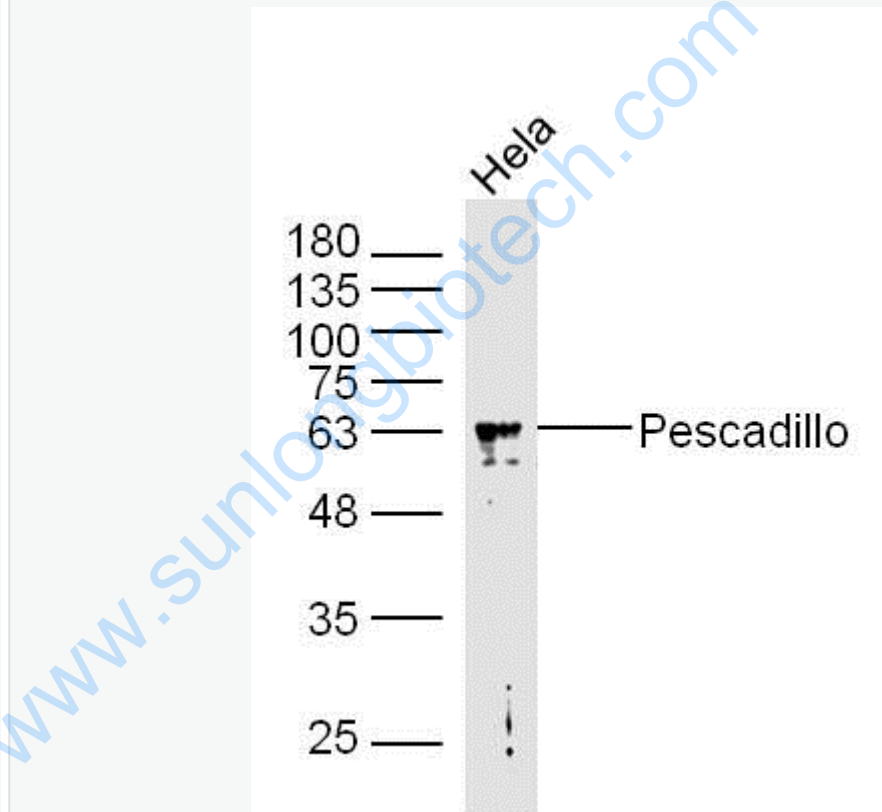
[Unigene: 28659](#)Mouse

[Unigene: 9521](#)Rat

**Important Note:**

This product as supplied is intended for research use only, not for use in human, therapeutic or diagnostic applications.

**Picture:**



Sample: HeLa(human)cell Lysate at 40 ug

Primary: Anti-Pescadillo(SL20263R)at 1/300 dilution

Secondary: IRDye800CW Goat Anti-RabbitIgG at 1/20000 dilution

Predicted band size: 68kD

	Observed band size: 63kD
--	--------------------------

[www.sunlongbiotech.com](http://www.sunlongbiotech.com)