



Rabbit Anti-TSPAN6 antibody

SL20292R

Product Name:	TSPAN6
Chinese Name:	四分子交联体6抗体(四旋蛋白)
Alias:	Putative NF kappa B activating protein 321; Putative NF-kappa-B-activating protein 321; T245; T245 protein; Tetraspan TM4SF; Tetraspanin 6; Tetraspanin TM4 D; Tetraspanin TM4-D; Tetraspanin TM4D; Tetraspanin-6; Tm4sf; TM4SF6; Transmembrane 4 superfamily member 6; TSN6_HUMAN; TSPAN 6; Tspan-6; TSPAN6; Tspan6 protein.
Organism Species:	Rabbit
Clonality:	Polyclonal
React Species:	Human,Mouse,Rat,Dog,Pig,Horse,Rabbit,Sheep,
Applications:	ELISA=1:500-1000IHC-P=1:400-800IHC-F=1:400-800ICC=1:100-500IF=1:100-500 (Paraffin sections need antigen repair) not yet tested in other applications. optimal dilutions/concentrations should be determined by the end user.
Molecular weight:	28kDa
Cellular localization:	The cell membrane
Form:	Lyophilized or Liquid
Concentration:	1mg/ml
immunogen:	KLH conjugated synthetic peptide derived from human TSPAN6:1-100/245<Extracellular>
Lsotype:	IgG
Purification:	affinity purified by Protein A
Storage Buffer:	Preservative: 15mM Sodium Azide, Constituents: 1% BSA, 0.01M PBS, pH 7.4
Storage:	Store at -20 °C for one year. Avoid repeated freeze/thaw cycles. The lyophilized antibody is stable at room temperature for at least one month and for greater than a year when kept at -20°C. When reconstituted in sterile pH 7.4 0.01M PBS or diluent of antibody the antibody is stable for at least two weeks at 2-4 °C.
PubMed:	PubMed
Product Detail:	Tetraspanins are a group of hydrophobic membrane proteins that interact with a wide variety of proteins including intracellular signaling molecules, integrins and membrane

receptors. Members of the tetraspanin family are characterized by the presence of four hydrophobic domains and play a role in cell development, activation, growth and motility. TSPAN6 (tetraspanin-6), also known as A15 homolog, putative NF-kappa-B-activating protein 321, T245 protein, tetraspanin TM4-D or TM4SF6 (transmembrane 4 superfamily member 6), is a 245 amino acid multi-pass membrane protein that belongs to the tetraspanin (TM4SF) family. TSPAN6 is expressed at high levels in brain, with lower levels of expression found in colon, lung, pancreas, prostate, retina and melanocytes, as well as fetal heart, liver and spleen. The gene encoding TSPAN6 maps to the human X chromosome.

Subcellular Location:

Membrane; Multi-pass membrane protein.

Similarity:

Belongs to the tetraspanin (TM4SF) family.

SWISS:

O43657

Gene ID:

7105

Database links:

[Entrez Gene: 7105](#)Human

[Omim: 300191](#)Human

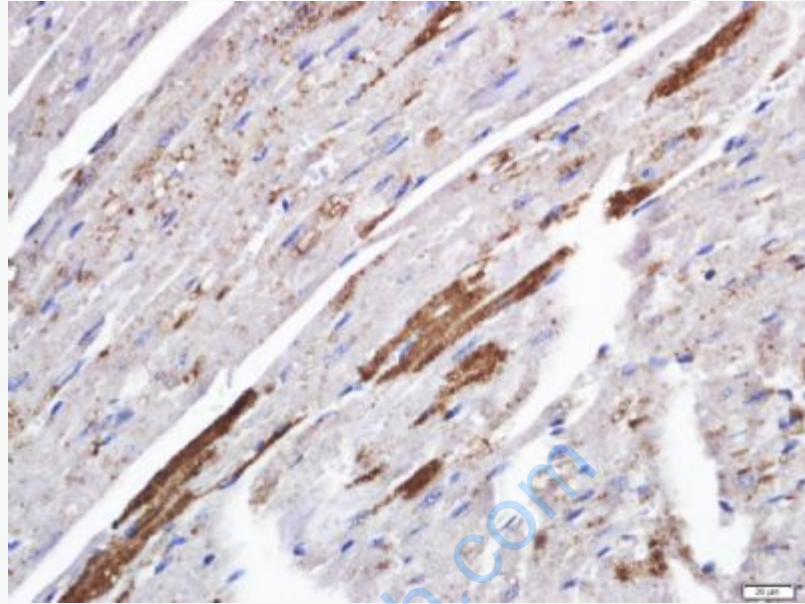
[SwissProt: Q32KU6](#)Cow

[SwissProt: O43657](#)Human

[Unigene: 43233](#)Human

Important Note:

This product as supplied is intended for research use only, not for use in human, therapeutic or diagnostic applications.



Picture:

Paraformaldehyde-fixed, paraffin embedded (mouse heart); Antigen retrieval by boiling in sodium citrate buffer (pH6.0) for 15min; Block endogenous peroxidase by 3% hydrogen peroxide for 20 minutes; Blocking buffer (normal goat serum) at 37°C for 30min; Antibody incubation with (TSPAN6) Polyclonal Antibody, Unconjugated (SL20292R) at 1:400 overnight at 4°C, followed by a conjugated secondary (sp-0023) for 20 minutes and DAB staining.