



## Rabbit Anti-LDHB antibody

SL20294R

<b>Product Name:</b>	LDHB
<b>Chinese Name:</b>	乳酸脱氢酶抗体
<b>Alias:</b>	Lactate Dehydrogenase B; Renal Carcinoma Antigen NY-REN-46; LDH Heart Subunit; EC 1.1.1.27; LDH-B; LDH-H; Epididymis Secretory Protein Li 281; Lactate Dehydrogenase H Chain; HEL-S-281; EC 1.1.1; LDHBD; TRG-5; LDHB HUMAN;
<b>Organism Species:</b>	Rabbit
<b>Clonality:</b>	Polyclonal
<b>React Species:</b>	Human,Mouse,Rat,Pig,Cow,Rabbit,
<b>Applications:</b>	WB=1:500-2000ELISA=1:500-1000 not yet tested in other applications. optimal dilutions/concentrations should be determined by the end user.
<b>Molecular weight:</b>	37kDa
<b>Cellular localization:</b>	cytoplasmic
<b>Form:</b>	Lyophilized or Liquid
<b>Concentration:</b>	1mg/ml
<b>immunogen:</b>	KLH conjugated synthetic peptide derived from human LDHB:181-250/334
<b>Lsotype:</b>	IgG
<b>Purification:</b>	affinity purified by Protein A
<b>Storage Buffer:</b>	0.01M TBS(pH7.4) with 1% BSA, 0.03% Proclin300 and 50% Glycerol.
<b>Storage:</b>	Store at -20 °C for one year. Avoid repeated freeze/thaw cycles. The lyophilized antibody is stable at room temperature for at least one month and for greater than a year when kept at -20°C. When reconstituted in sterile pH 7.4 0.01M PBS or diluent of antibody the antibody is stable for at least two weeks at 2-4 °C.
<b>PubMed:</b>	<a href="#">PubMed</a>
<b>Product Detail:</b>	This gene encodes the B subunit of lactate dehydrogenase enzyme, which catalyzes the interconversion of pyruvate and lactate with concomitant interconversion of NADH and NAD <sup>+</sup> in a post-glycolysis process. Recent studies have shown that two protein isoforms are produced from the same mRNA by use of alternative in-frame translation termination codons via a stop codon readthrough mechanism, and that these C-terminally distinct isoforms have different subcellular localization. Alternatively spliced

transcript variants have also been found for this gene. Mutations in this gene are associated with lactate dehydrogenase B deficiency. Pseudogenes have been identified on chromosomes X, 5 and 13. [provided by RefSeq, Oct 2015]

**Function:**

This protein is involved in step 1 of the subpathway that synthesizes (S)-lactate from pyruvate. This subpathway is part of the pathway pyruvate fermentation to lactate, which is itself part of Fermentation.

View all proteins of this organism that are known to be involved in the subpathway that synthesizes (S)-lactate from pyruvate, the pathway pyruvate fermentation to lactate and in Fermentation.

**Subunit:**

Homotetramer.

**Subcellular Location:**

Cytoplasm

**Similarity:**

Belongs to the LDH/MDH superfamily. LDH family.

**SWISS:**

P07195

**Gene ID:**

3945

**Database links:**

[Entrez Gene: 3945](#)Human

[Entrez Gene: 16832](#)Mouse

[Entrez Gene: 24534](#)Rat

[Omim: 150100](#)Human

[SwissProt: P07195](#)Human

[SwissProt: P16125](#)Mouse

[SwissProt: P42123](#)Rat

[Unigene: 446149](#)Human

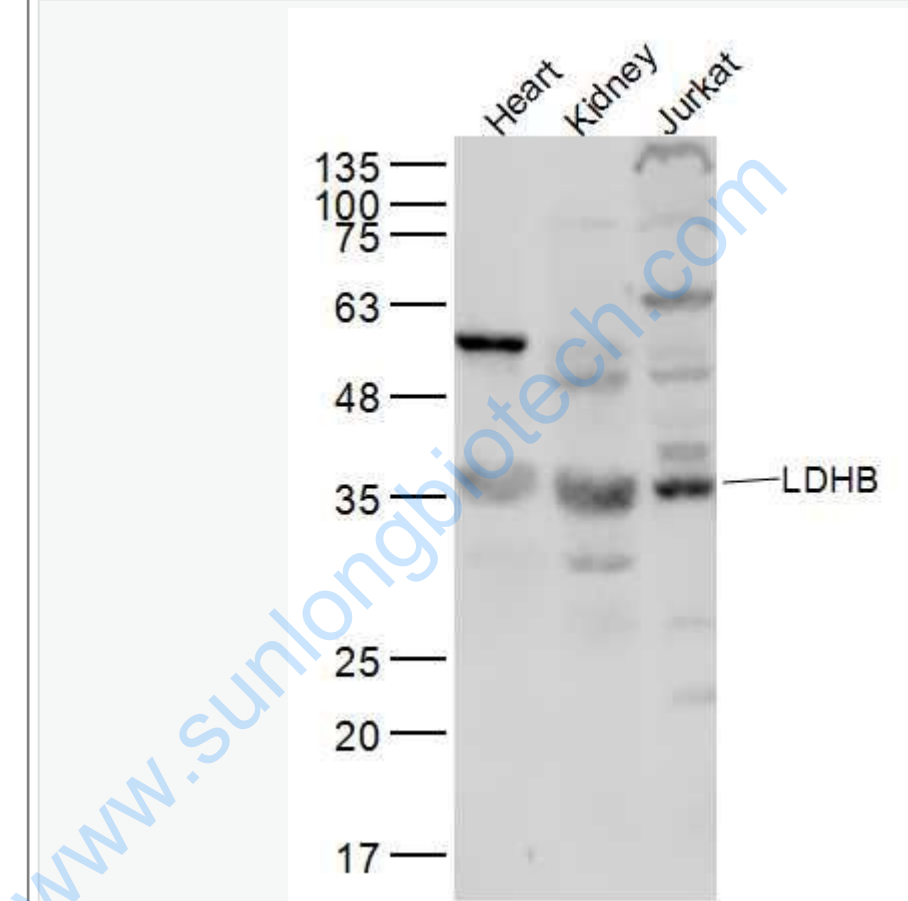
[Unigene: 9745](#)Mouse

[Unigene: 1785](#)Rat

**Important Note:**

This product as supplied is intended for research use only, not for use in human, therapeutic or diagnostic applications.

Picture:



Sample:

Heart (Mouse) Lysate at 40 ug

Kidney (Mouse) Lysate at 40 ug

Jurkat (Human) Lysate at 40 ug

Primary: Anti-LDHB (SL20294R) at 1/300 dilution

Secondary: IRDye800CW Goat Anti-Rabbit IgG at 1/20000 dilution

	<p>Predicted band size: 37 kD</p>
--	-----------------------------------

	<p>Observed band size: 37 kD</p>
--	----------------------------------

[www.sunlongbiotech.com](http://www.sunlongbiotech.com)