



Rabbit Anti-TGF-beta 3 antibody

SL20413R

| | |
|-------------------------------|--|
| Product Name: | TGF-beta 3 |
| Chinese Name: | 转移生长因子β3抗体(TGFβ3) |
| Alias: | TGF beta 3; ARVD; FLJ16571; MGC105479; MGC118722; TGF beta 3; TGF beta3; TGF-beta-3; TGF-beta 3; TGFB 3; TGFB3; TGFB3_HUMAN; transforming growth factor beta 3; Transforming growth factor beta-3. |
| Organism Species: | Rabbit |
| Clonality: | Polyclonal |
| React Species: | Human,Mouse,Rat, |
| Applications: | WB=1:500-2000ELISA=1:500-1000 not yet tested in other applications. optimal dilutions/concentrations should be determined by the end user. |
| Molecular weight: | 30/47kDa |
| Cellular localization: | Secretory protein |
| Form: | Lyophilized or Liquid |
| Concentration: | 1mg/ml |
| immunogen: | KLH conjugated synthetic peptide derived from human TGF-beta 3:321-412/412 |
| Lsotype: | IgG |
| Purification: | affinity purified by Protein A |
| Storage Buffer: | Preservative: 15mM Sodium Azide, Constituents: 1% BSA, 0.01M PBS, pH 7.4 |
| Storage: | Store at -20 °C for one year. Avoid repeated freeze/thaw cycles. The lyophilized antibody is stable at room temperature for at least one month and for greater than a year when kept at -20°C. When reconstituted in sterile pH 7.4 0.01M PBS or diluent of antibody the antibody is stable for at least two weeks at 2-4 °C. |
| PubMed: | PubMed |
| Product Detail: | The TGFBeta superfamily is composed of numerous growth and differentiation factors, including transforming growth factors Beta(TGFBeta) 1,2 and 3; placental transforming growth factor (PTGFBeta);growth /differentiation factors (GDFs); mullerian inhibiting substance (MIS);bone morphogenic proteins (BMPs);glial cell line-derived neurotrophic factor (GDNF);inhibins or activins (Alpha,Beta-A, Beta-B and Beta-C),Lefty and Nodal. Members of the TGF superfamily are involved in embryonic development and |

adult tissue homeostasis.

Function:

Involved in embryogenesis and cell differentiation.

Subunit:

Homodimer; disulfide-linked. Interacts with ASPN.

Subcellular Location:

Secreted.

DISEASE:

Defects in TGFB3 are a cause of familial arrhythmogenic right ventricular dysplasia type 1 (ARVD1) [MIM:107970]; also known as arrhythmogenic right ventricular cardiomyopathy 1 (ARVC1). ARVD is an autosomal dominant disease characterized by partial degeneration of the myocardium of the right ventricle, electrical instability, and sudden death. It is clinically defined by electrocardiographic and angiographic criteria; pathologic findings, replacement of ventricular myocardium with fatty and fibrous elements, preferentially involve the right ventricular free wall.

Similarity:

Belongs to the TGF-beta family.

SWISS:

P10600

Gene ID:

7043

Database links:

[Entrez Gene: 7043](#)Human

[Entrez Gene: 21809](#)Mouse

[Entrez Gene: 25717](#)Rat

[Omir: 190230](#)Human

[SwissProt: P10600](#)Human

[SwissProt: P17125](#)Mouse

[SwissProt: Q07258](#)Rat

[Unigene: 592317](#)Human

[Unigene: 3992](#)Mouse

[Unigene: 7018](#)Rat

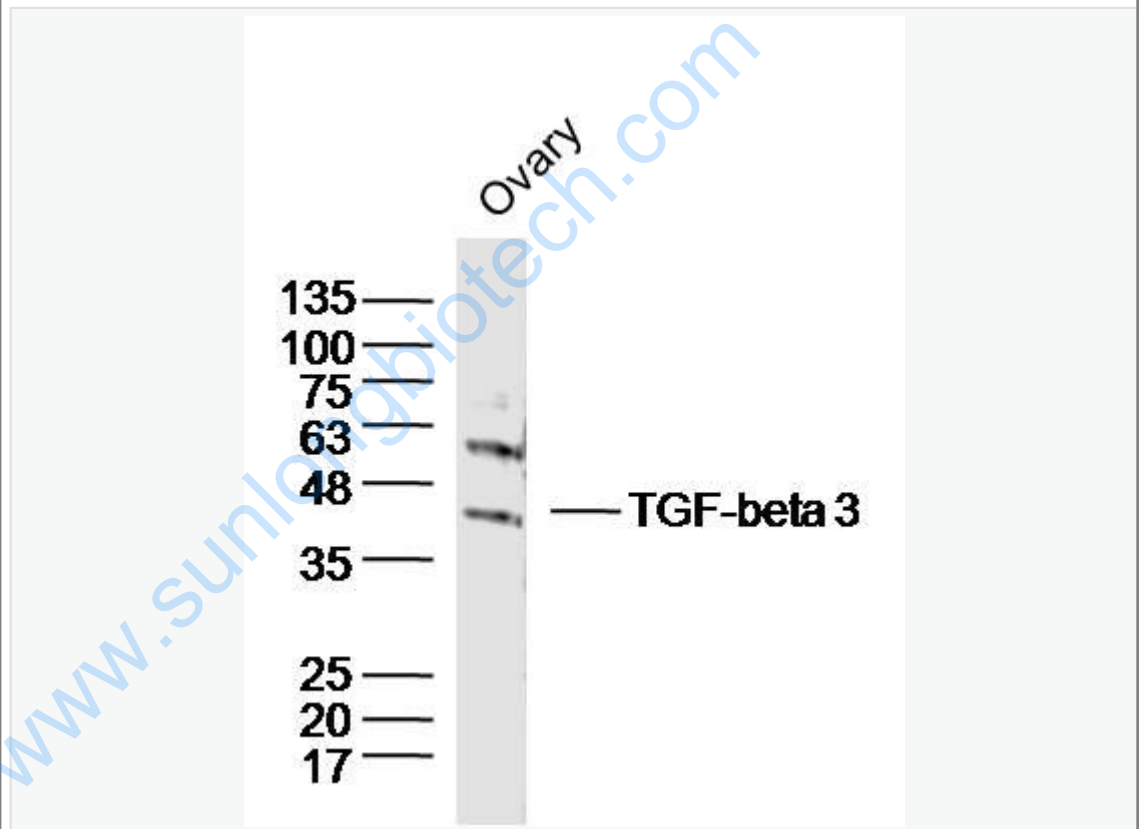
Important Note:

This product as supplied is intended for research use only, not for use in human, therapeutic or diagnostic applications.

Growth factors and hormones (Growth Factor and Hormones)

TGF是一种多效生长因子,对epithelial cells增值有潜在抑制作用,可抑制Tumour生长, 用于许多恶性Tumour如:胃癌、肺癌、膀胱癌、肾癌、前列腺癌、结肠癌等多种恶性Tumour的研究。分子量:47kDa。此抗体是TGFβ3 特异性抗体, 与TGF-β1和TGF-β2没有React Species。

Picture:



Sample:Ovary (Mouse)Lysate at 40 ug

Primary: Anti-TGF-beta 3(SL20413R)at 1/300 dilution

Secondary: IRDye800CW Goat Anti-RabbitIgG at 1/20000 dilution

Predicted band size: 30'47kD

Observed band size: 47kD

