



Rabbit Anti-LC3C antibody

SL20416R

Product Name:	LC3C
Chinese Name:	微管相关蛋白轻链3C抗体
Alias:	LC3 like protein 2; MAP1 light chain 3 like protein 3; Microtubule-associated proteins 1A/1B light chain 3C; Autophagy-related protein LC3 C; Autophagy-related ubiquitin-like modifier LC3 C; MAP1 light chain 3-like protein 3; MAP1A/MAP1B light chain 3 C; MAP1A/MAP1B LC3 C; Microtubule-associated protein 1 light chain 3 gamma; MAP1LC3C; MLP3C HUMAN.
Organism Species:	Rabbit
Clonality:	Polyclonal
React Species:	Human,Mouse,
Applications:	ELISA=1:500-1000Flow-Cyt=1μg/Test not yet tested in other applications. optimal dilutions/concentrations should be determined by the end user.
Molecular weight:	16kDa
Cellular localization:	cytoplasmicThe cell membrane
Form:	Lyophilized or Liquid
Concentration:	1mg/ml
immunogen:	KLH conjugated synthetic peptide derived from human LC3C:1-50/147
Lsotype:	IgG
Purification:	affinity purified by Protein A
Storage Buffer:	Preservative: 15mM Sodium Azide, Constituents: 1% BSA, 0.01M PBS, pH 7.4
Storage:	Store at -20 °C for one year. Avoid repeated freeze/thaw cycles. The lyophilized antibody is stable at room temperature for at least one month and for greater than a year when kept at -20°C. When reconstituted in sterile pH 7.4 0.01M PBS or diluent of antibody the antibody is stable for at least two weeks at 2-4 °C.
PubMed:	PubMed
Product Detail:	A major contributor to cellular homeostasis is the ability of the cell to strike a balance between the formation and degradation/removal of its cellular components. This process of internal cellular turn-over is called autophagy (self-eating), and is facilitated by a pathway of around 16 interacting proteins in the human. LC3, a ubiquitin-like modifier

protein, is the human homolog of yeast Apg8 and is involved in the formation of autophagosomal vacuoles, called autophagosomes. There are three isoforms of human LC3 (named MAP1LC3A, MAP1LC3B, and MAP1LC3C), which exhibit different tissue distributions. A disruption to the autophagic process is now associated with the progression of several cancers, neurodegenerative disorders and cardiac pathologies, where LC3 is widely employed as a marker for autophagy.

Function:

Probably involved in formation of autophagosomal vacuoles (autophagosomes).

Subunit:

3 different light chains, LC1, LC2 and LC3, can associate with MAP1A and MAP1B proteins.

Subcellular Location:

Cytoplasm, cytoskeleton. Endomembrane system; Lipid-anchor. Cytoplasmic vesicle, autophagosome membrane; Lipid-anchor.

Tissue Specificity:

Most abundant in placenta, lung and ovary.

Similarity:

Belongs to the MAP1 LC3 family.

SWISS:

Q9BXW4

Gene ID:

440738

Database links:

[Entrez Gene: 440738](#)Human

[Omid: 609605](#)Human

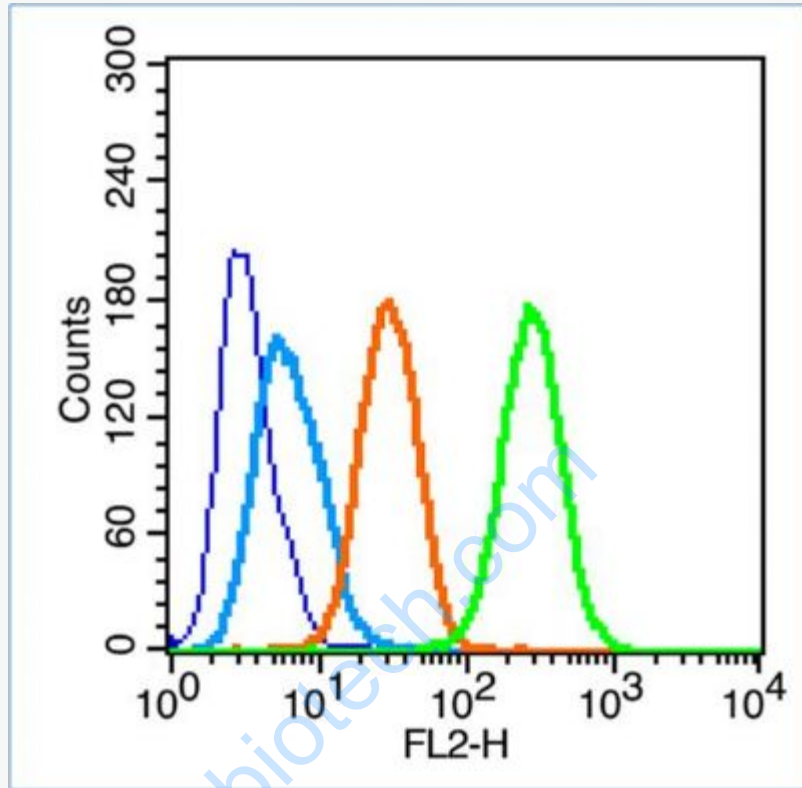
[SwissProt: Q9BXW4](#)Human

[Unigene: 534971](#)Human

Important Note:

This product as supplied is intended for research use only, not for use in human, therapeutic or diagnostic applications.

Picture:



Blank control (blue line): HeLa (fixed with 70% ethanol (Overnight at 4°C) and then permeabilized with 90% ice-cold methanol for 30 min at -20°C).

Primary Antibody (green line): Rabbit Anti-LC3C antibody (SL20416R), Dilution: 1 µg / 10⁶ cells;

Isotype Control Antibody (orange line): Rabbit IgG .

Secondary Antibody (white blue line): Goat anti-rabbit IgG-PE, Dilution: 1 µg / test.