



## Rabbit Anti-Semaphorin 5A antibody

SL20430R

<b>Product Name:</b>	Semaphorin 5A
<b>Chinese Name:</b>	Transmembrane proteinSEMA5A抗体
<b>Alias:</b>	Semaphorin 5A; Semaphorin-5A; Semaphorin5A; SEMA5A; SEMAF; Semaphorin F; SEM5A HUMAN.
<b>Organism Species:</b>	Rabbit
<b>Clonality:</b>	Polyclonal
<b>React Species:</b>	Human,Mouse,Rat,Chicken,Dog,Pig,Cow,Rabbit,Sheep,
<b>Applications:</b>	WB=1:500-2000ELISA=1:500-1000 not yet tested in other applications. optimal dilutions/concentrations should be determined by the end user.
<b>Molecular weight:</b>	118kDa
<b>Cellular localization:</b>	The cell membrane
<b>Form:</b>	Lyophilized or Liquid
<b>Concentration:</b>	1mg/ml
<b>immunogen:</b>	KLH conjugated synthetic peptide derived from human Semaphorin 5A:671-770/1074<Extracellular>
<b>Lsotype:</b>	IgG
<b>Purification:</b>	affinity purified by Protein A
<b>Storage Buffer:</b>	Preservative: 15mM Sodium Azide, Constituents: 1% BSA, 0.01M PBS, pH 7.4
<b>Storage:</b>	Store at -20 °C for one year. Avoid repeated freeze/thaw cycles. The lyophilized antibody is stable at room temperature for at least one month and for greater than a year when kept at -20°C. When reconstituted in sterile pH 7.4 0.01M PBS or diluent of antibody the antibody is stable for at least two weeks at 2-4 °C.
<b>PubMed:</b>	<a href="#">PubMed</a>
<b>Product Detail:</b>	This gene belongs to the semaphorin gene family that encodes membrane proteins containing a semaphorin domain and several thrombospondin type-1 repeats. Members of this family are involved in axonal guidance during neural development. This gene has been implicated as an autism susceptibility gene.  <b>Function:</b>

Bifunctional axonal guidance cue regulated by sulfated proteoglycans; attractive effects result from interactions with heparan sulfate proteoglycans (HSPGs), while the inhibitory effects depend on interactions with chondroitin sulfate proteoglycans (CSPGs) (By similarity). Ligand for receptor PLXNB3. In glioma cells, SEMA5A stimulation of PLXNB3 results in the disassembly of F-actin stress fibers, disruption of focal adhesions and cellular collapse as well as inhibition of cell migration and invasion through ARHGDI A-mediated inactivation of RAC1. May promote angiogenesis by increasing endothelial cell proliferation and migration and inhibiting apoptosis.

**Subunit:**

Binds PLXNB3.

**Subcellular Location:**

Membrane; single-pass type I membrane protein

**Similarity:**

Belongs to the semaphorin family.

Contains 1 PSI domain.

Contains 1 Sema domain.

Contains 7 TSP type-1 domains.

**SWISS:**

Q13591

**Gene ID:**

9037

**Database links:**

[Entrez Gene: 9037](#)Human

[Entrez Gene: 20356](#)Mouse

[Omim: 609297](#)Human

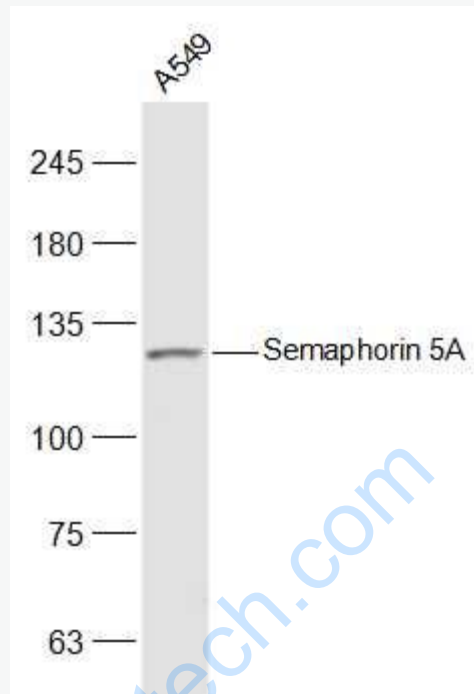
[SwissProt: Q13591](#)Human

[SwissProt: Q62217](#)Mouse

**Important Note:**

This product as supplied is intended for research use only, not for use in human, therapeutic or diagnostic applications.

Picture:



Sample:

A549(Human) Cell Lysate at 30 ug

Primary: Anti-Semaphorin 5A (SL20430R) at 1/500 dilution

Secondary: IRDye800CW Goat Anti-Rabbit IgG at 1/20000 dilution

Predicted band size: 118 kD

Observed band size: 118 kD