



Rabbit Anti-FBP1 antibody

SL20431R

Product Name:	FBP1
Chinese Name:	果糖二磷酸酶1抗体
Alias:	6-bisphosphatase 1; 6-bisphosphate 1-phosphohydrolase 1; D fructose 1 6 bisphosphate 1 phosphohydrolase 1; D-fructose-1; EC 3.1.3.11; F16P1_HUMAN; FBP; FBP 1; FB Pase 1; Fructose 1 6 bisphosphatase 1; Fructose bisphosphatase 1; Fructose-1; Growth inhibiting protein 17; Liver fructose bisphosphatase.
Organism Species:	Rabbit
Clonality:	Polyclonal
React Species:	Human,Mouse,Rat,Dog,Pig,Horse,Rabbit,
Applications:	WB=1:500-2000ELISA=1:500-1000 not yet tested in other applications. optimal dilutions/concentrations should be determined by the end user.
Molecular weight:	37kDa
Cellular localization:	The nucleus
Form:	Lyophilized or Liquid
Concentration:	1mg/ml
immunogen:	KLH conjugated synthetic peptide derived from human FBP1:51-150/338
Lsotype:	IgG
Purification:	affinity purified by Protein A
Storage Buffer:	Preservative: 15mM Sodium Azide, Constituents: 1% BSA, 0.01M PBS, pH 7.4
Storage:	Store at -20 °C for one year. Avoid repeated freeze/thaw cycles. The lyophilized antibody is stable at room temperature for at least one month and for greater than a year when kept at -20°C. When reconstituted in sterile pH 7.4 0.01M PBS or diluent of antibody the antibody is stable for at least two weeks at 2-4 °C.
PubMed:	PubMed
Product Detail:	Fructose-1,6-bisphosphatase 1, a gluconeogenesis regulatory enzyme, catalyzes the hydrolysis of fructose 1,6-bisphosphate to fructose 6-phosphate and inorganic phosphate. Fructose-1,6-diphosphatase deficiency is associated with hypoglycemia and metabolic acidosis. [provided by RefSeq, Jul 2008]

Subunit:

Homotetramer

Similarity:

Belongs to the FBPase class 1 family.

SWISS:

P09467

Gene ID:

2203

Database links:

[Entrez Gene: 2203](#)Human

[Entrez Gene: 14121](#)Mouse

[Entrez Gene: 24362](#)Rat

[Omim: 611570](#)Human

[SwissProt: P09467](#)Human

[SwissProt: Q9QXD6](#)Mouse

[SwissProt: P19112](#)Rat

[Unigene: 494496](#)Human

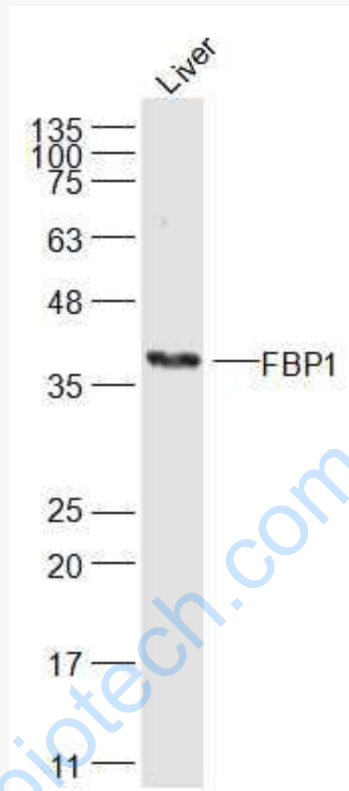
[Unigene: 423078](#)Mouse

[Unigene: 33703](#)Rat

Important Note:

This product as supplied is intended for research use only, not for use in human, therapeutic or diagnostic applications.

Picture:



Sample:

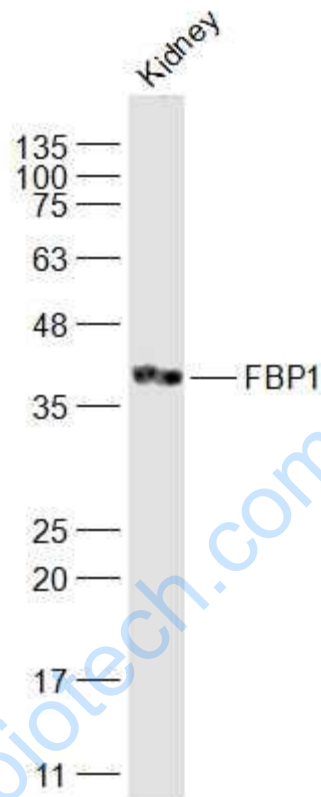
Liver (Mouse) Lysate at 40 ug

Primary: Anti-FBP1 (SL20431R) at 1/1000 dilution

Secondary: IRDye800CW Goat Anti-Rabbit IgG at 1/20000 dilution

Predicted band size: 37 kD

Observed band size: 37 kD



Sample:

Kidney (Mouse) Lysate at 40 ug

Primary: Anti-FBP1 (SL20431R) at 1/1000 dilution

Secondary: IRDye800CW Goat Anti-Rabbit IgG at 1/20000 dilution

Predicted band size: 37 kD

Observed band size: 37 kD