



Rabbit Anti-NKG2D antibody

SL20660R

Product Name:	NKG2D
Chinese Name:	NK细胞受体2D抗体
Alias:	KLRK1; natural killer cell group 2D; NKG2-D isoform b; Klrk1; Nkrp2; NKG2-D type II integral membrane protein; NKG2-D-activating NK receptor; NK cell receptor D; Killer cell lectin-like receptor subfamily K; NK lectin-like receptor; CD314; CD 314; CD314 antigen; D12S2489E; Killer cell lectin like receptor subfamily K member 1; Killer cell lectin-like receptor subfamily K member 1; KLR; Klrk1; NKG2 D activating NK receptor; NKG2 D type II integral membrane protein; NKG2-D-activating NK receptor; NKG2D_HUMAN; NKLLR; NKR P2; Nkrp2.
Organism Species:	Rabbit
Clonality:	Polyclonal
React Species:	Human,Mouse,Rat,Pig,
Applications:	WB=1:500-2000ELISA=1:500-1000Flow-Cyt=1ug/Test not yet tested in other applications. optimal dilutions/concentrations should be determined by the end user.
Molecular weight:	25kDa
Cellular localization:	The cell membrane
Form:	Lyophilized or Liquid
Concentration:	1mg/ml
immunogen:	KLH conjugated synthetic peptide derived from human NKG2D:101-200/219<Extracellular>
Lsotype:	IgG
Purification:	affinity purified by Protein A
Storage Buffer:	0.01M TBS(pH7.4) with 1% BSA, 0.03% Proclin300 and 50% Glycerol.
Storage:	Store at -20 °C for one year. Avoid repeated freeze/thaw cycles. The lyophilized antibody is stable at room temperature for at least one month and for greater than a year when kept at -20°C. When reconstituted in sterile pH 7.4 0.01M PBS or diluent of antibody the antibody is stable for at least two weeks at 2-4 °C.
PubMed:	PubMed
Product Detail:	This locus represents naturally occurring read-through transcription between the

neighboring KLRC4 (killer cell lectin-like receptor subfamily C, member 4) and KLRK1 (killer cell lectin-like receptor subfamily K, member 1) genes on chromosome 12. The read-through transcript includes an alternate 5' exon and lacks a significant portion of the KLRC4 coding sequence, including the start codon, and it thus encodes the KLRK1 protein. [provided by RefSeq, Dec 2010]

Function:

Receptor for MICA, MICB, ULBP1, ULBP2, ULBP3 (ULBP2>ULBP1>ULBP3) and ULBP4. Plays a role as a receptor for the recognition of MHC class I HLA-E molecules by NK cells and some cytotoxic T-cells. Involved in the immune surveillance exerted by T- and B-lymphocytes.

Subunit:

Homodimer.

Subcellular Location:

Membrane; Single-pass type II membrane protein.

Tissue Specificity:

Natural killer cells. Expressed on essentially all CD56+CD3- NK cells from freshly isolated PBMC. Also detected in gamma-delta cells and CD8+ alpha-beta T-cells. Expressed in interferon-producing killer dendritic cells (IKDCs).

Similarity:

Contains 1 C-type lectin domain.

SWISS:

P26718

Gene ID:

22914

Database links:

[Entrez Gene: 100528032](#)Human

[Entrez Gene: 22914](#)Human

[Entrez Gene: 27007](#)Mouse

[Entrez Gene: 24934](#)Rat

[Omim: 611817](#)Human

[SwissProt: P26718](#)Human

[SwissProt: O54709](#)Mouse

[SwissProt: O70215](#)Rat

[Unigene: 387787](#)Human

[Unigene: 8217](#)Mouse

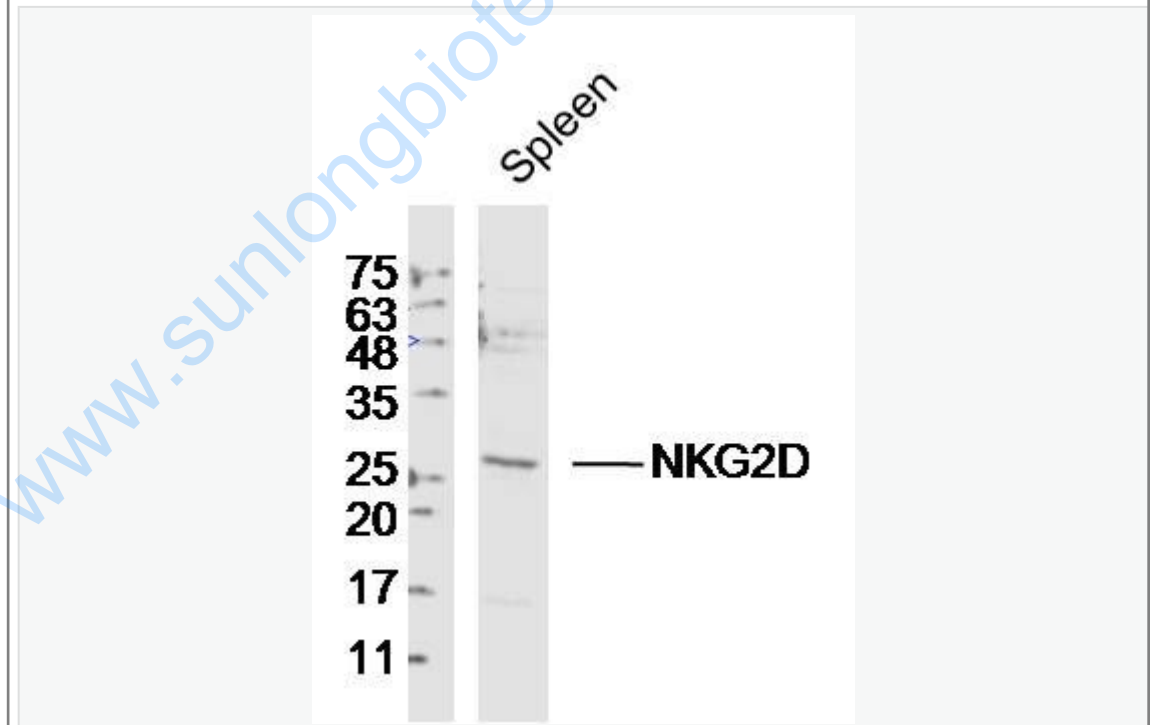
[Unigene: 14544](#)Rat

Important Note:

This product as supplied is intended for research use only, not for use in human, therapeutic or diagnostic applications.

NKG2-D出现在免疫细胞上表达的受体, NKG2D属C型凝集素家族Transmembrane protein, 广泛表达在NK细胞、CD8+的 $\alpha\beta$ T细胞和 $\gamma\delta$ T细胞表面, 可以提高NK细胞对Tumour细胞的杀伤活性。

Picture:



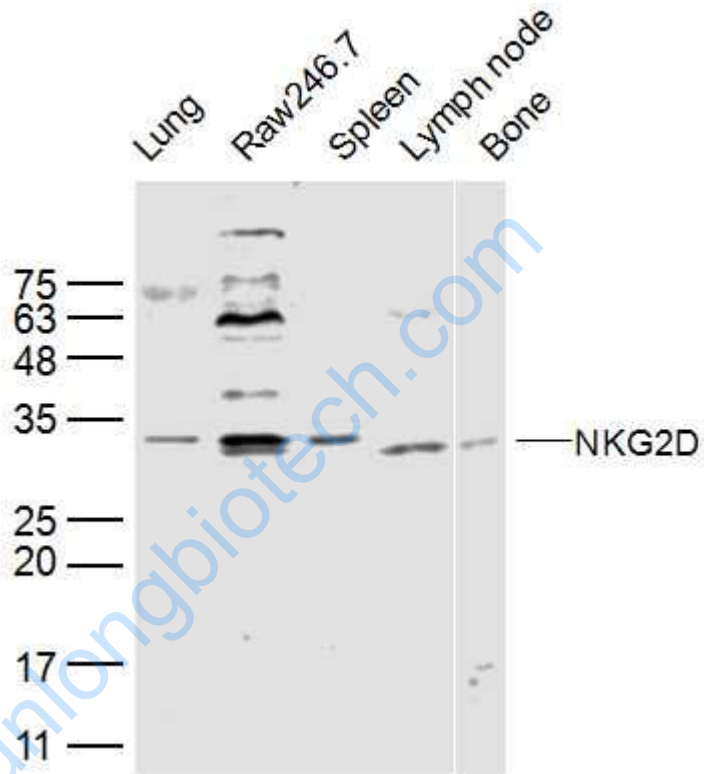
Sample: Spleen (Mouse) Lysate at 40 ug

Primary: Anti-NKG2D(SL20660R)at 1/300 dilution

Secondary: IRDye800CW Goat Anti-Rabbit IgG at 1/20000 dilution

Predicted band size: 25kD

Observed band size: 26kD



Sample:

Lung (Mouse) Lysate at 40 ug

Raw246.7(Mouse) Cell Lysate at 40 ug

Spleen (Mouse) Lysate at 40 ug

Lymph node(Mouse) Lysate at 40 ug

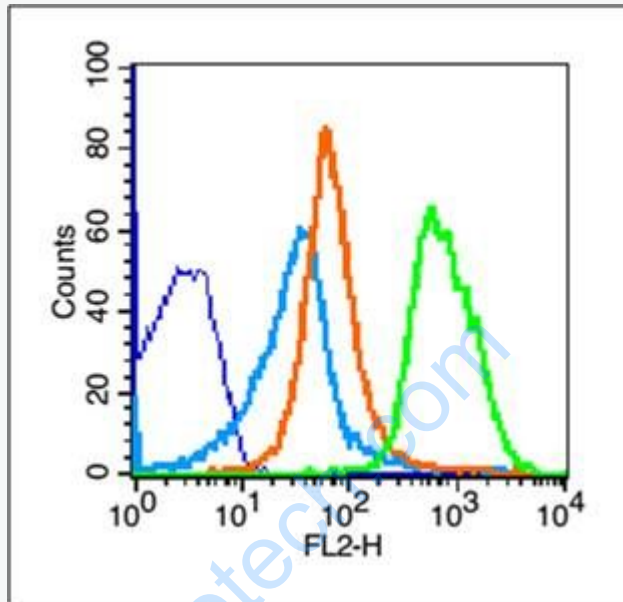
Bone (Rat) Lysate at 40 ug

Primary: Anti- NKG2D (SL20660R) at 1/300 dilution

Secondary: IRDye800CW Goat Anti-Rabbit IgG at 1/20000 dilution

Predicted band size: 25 kD

Observed band size: 25 kD



Blank control (blue line): Mouse thymus cells (fixed with 70% methanol (Overnight at 4°C) . Cells stained with Primary Antibody for 30 min at room temperature. The cells).

Primary Antibody (green line): Rabbit Anti-NKG2D antibody (SL20660R), Dilution: 1 μ g /10⁶ cells;

Isotype Control Antibody (orange line): Rabbit IgG .

Secondary Antibody (white blue line): Goat anti-rabbit IgG-PE, Dilution: 1 μ g /test.