



Rabbit Anti-TGF alpha antibody

SL20674R

Product Name:	TGF alpha
Chinese Name:	转移生长因子 α 抗体
Alias:	EGF like TGF; ETGF; TFGA; TGF A; TGF type 1; TGFA; Transforming growth factor alpha; Transforming growth factor alpha precursor; Wa1; Waved 1; TGFA_MOUSE; TGF α ; TGF- α ; TGF α .
Organism Species:	Rabbit
Clonality:	Polyclonal
React Species:	Human,Mouse,Rat,
Applications:	ELISA=1:500-1000IHC-P=1:400-800IHC-F=1:400-800Flow-Cyt=1 μ g/TestICC=1:100-500IF=1:100-500 (Paraffin sections need antigen repair) not yet tested in other applications. optimal dilutions/concentrations should be determined by the end user.
Cellular localization:	The cell membraneSecretory protein
Form:	Lyophilized or Liquid
Concentration:	1mg/ml
immunogen:	KLH conjugated synthetic peptide derived from mouse TGF alpha:39-88/159
Lsotype:	IgG
Purification:	affinity purified by Protein A
Storage Buffer:	0.01M TBS(pH7.4) with 1% BSA, 0.03% Proclin300 and 50% Glycerol.
Storage:	Store at -20 °C for one year. Avoid repeated freeze/thaw cycles. The lyophilized antibody is stable at room temperature for at least one month and for greater than a year when kept at -20°C. When reconstituted in sterile pH 7.4 0.01M PBS or diluent of antibody the antibody is stable for at least two weeks at 2-4 °C.
PubMed:	PubMed
Product Detail:	This gene encodes a growth factor that is a ligand for the epidermal growth factor receptor, which activates a signaling pathway for cell proliferation, differentiation and development. This protein may act as either a transmembrane-bound ligand or a soluble ligand. This gene has been associated with many types of cancers, and it may also be involved in some cases of cleft lip/palate. Alternatively spliced transcript variants encoding different isoforms have been found for this gene. [provided by RefSeq, Sep

2011].

Function:

TGF alpha is a mitogenic polypeptide that is able to bind to the EGF receptor/EGFR and to act synergistically with TGF beta to promote anchorage-independent cell proliferation in soft agar (By similarity). Inhibitor of acid secretion. Inhibitor of aminopyrine uptake in parietal cells (in vitro).

Subunit:

Interacts with the PDZ domains of MAGI3, SDCBP and SNTA1. The interaction with SDCBP, is required for the targeting to the cell surface. In the endoplasmic reticulum, in its immature form (i.e. with a prosegment and lacking full N-glycosylation), interacts with CNIH. In the Golgi apparatus, may form a complex with CNIH and GORASP2. Interacts (via cytoplasmic C-terminal domain) with NKD2.

Subcellular Location:

Transforming growth factor alpha: Secreted, extracellular space. Protransforming growth factor alpha: Cell membrane; Single-pass type I membrane protein.

Tissue Specificity:

Isoform 1, isoform 3 and isoform 4 are expressed in keratinocytes and tumor-derived cell lines.

Similarity:

Contains 1 EGF-like domain.

SWISS:

P01135

Gene ID:

21802

Database links:

[Entrez Gene: 403431](#)Dog

[Entrez Gene: 7039](#)Human

[Entrez Gene: 21802](#)Mouse

[Entrez Gene: 24827](#)Rat

[Omim: 190170](#)Human

[SwissProt: P01135](#)Human

[SwissProt: P48030](#)Mouse

[SwissProt: P01134](#)Rat

[Unigene: 170009](#)Human

[Unigene: 137222](#)Mouse

[Unigene: 9952](#)Rat

Important Note:

This product as supplied is intended for research use only, not for use in human, therapeutic or diagnostic applications.

Growth factors and hormones

TGF α 是一个强有力的只有丝分裂多肽,主要由恶性Tumour产生。

Picture:

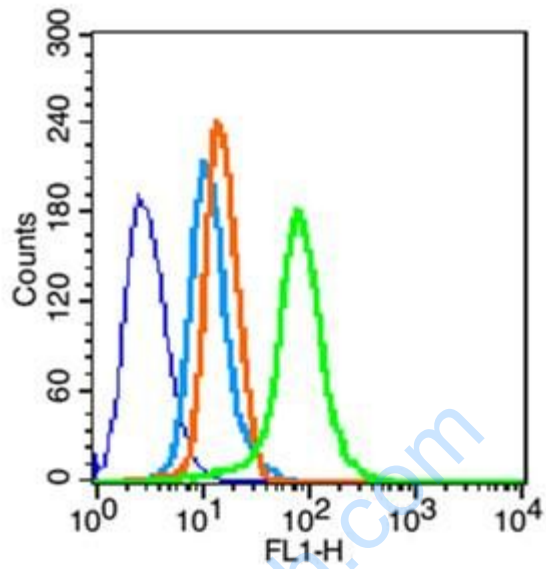


Blank control (blue line): HL60 (fixed with 70% methanol (Overnight at 4°C) and then permeabilized with 90% ice-cold methanol for 20 min at -20°C).

Primary Antibody (green line): Rabbit Anti-PARP antibody (SL20674R), Dilution: 1 μ g /10⁶ cells;

Isotype Control Antibody (orange line): Rabbit IgG .

Secondary Antibody (white blue line): Goat anti-rabbit IgG-PE, Dilution: 1 μ g /test.



Blank control (blue line): HeLa (fixed with 70% methanol (Overnight at -20°C) and then permeabilized with ice-cold 90% methanol for 30 min on ice).

Primary Antibody (green line): Rabbit Anti-F alpha antibody (SL20674R), Dilution: 1 µg / 10⁶ cells;

Isotype Control Antibody (orange line): Rabbit IgG .

Secondary Antibody (white blue line): Goat anti-rabbit IgG-FITC, Dilution: 1 µg / test.