



Rabbit Anti-Integrin alpha X /CD11c antibody

SL20690R

Product Name:	Integrin alpha X /CD11c
Chinese Name:	整合素 α X抗体
Alias:	Integrin alpha-X; integrin alpha-X precursor; ITGAX; CD11C; SLEB6; CD11C (p150) alpha polypeptide; complement receptor 4; integrin α X; CD11 antigen-like family member C; leukocyte adhesion receptor p150,95; leukocyte adhesion glycoprotein p150,95 alpha chain; ITAX HUMAN.
Organism Species:	Rabbit
Clonality:	Polyclonal
React Species:	Human,Mouse,Rat,
Applications:	WB=1:500-2000Flow-Cyt=1 μ g/Test not yet tested in other applications. optimal dilutions/concentrations should be determined by the end user.
Molecular weight:	126kDa
Cellular localization:	The cell membrane
Form:	Lyophilized or Liquid
Concentration:	1mg/ml
immunogen:	KLH conjugated synthetic peptide derived from human Integrin alpha X /CD11c:901-1000/1163<Extracellular>
Lsotype:	IgG
Purification:	affinity purified by Protein A
Storage Buffer:	0.01M TBS(pH7.4) with 1% BSA, 0.03% Proclin300 and 50% Glycerol.
Storage:	Store at -20 °C for one year. Avoid repeated freeze/thaw cycles. The lyophilized antibody is stable at room temperature for at least one month and for greater than a year when kept at -20°C. When reconstituted in sterile pH 7.4 0.01M PBS or diluent of antibody the antibody is stable for at least two weeks at 2-4 °C.
PubMed:	PubMed
Product Detail:	This gene encodes the integrin alpha X chain protein. Integrins are heterodimeric integral membrane proteins composed of an alpha chain and a beta chain. This protein combines with the beta 2 chain (ITGB2) to form a leukocyte-specific integrin referred to as inactivated-C3b (iC3b) receptor 4 (CR4). The alpha X beta 2 complex seems to

overlap the properties of the alpha M beta 2 integrin in the adherence of neutrophils and monocytes to stimulated endothelium cells, and in the phagocytosis of complement coated particles. [provided by RefSeq].

Function:

Integrin alpha-X/beta-2 is a receptor for fibrinogen. It recognizes the sequence G-P-R in fibrinogen. It mediates cell-cell interaction during inflammatory responses. It is especially important in monocyte adhesion and chemotaxis.

Subcellular Location:

Membrane.

Tissue Specificity:

Predominantly expressed in monocytes and granulocytes.

Similarity:

Belongs to the integrin alpha chain family.

Contains 7 FG-GAP repeats.

Contains 1 VWFA domain.

SWISS:

P20702

Gene ID:

3687

Database links:

[Entrez Gene: 3687](#)Human

[Entrez Gene: 16411](#)Mouse

[Entrez Gene: 499271](#)Rat

[Omim: 151510](#)Human

[SwissProt: P20702](#)Human

[SwissProt: Q9QXH4](#)Mouse

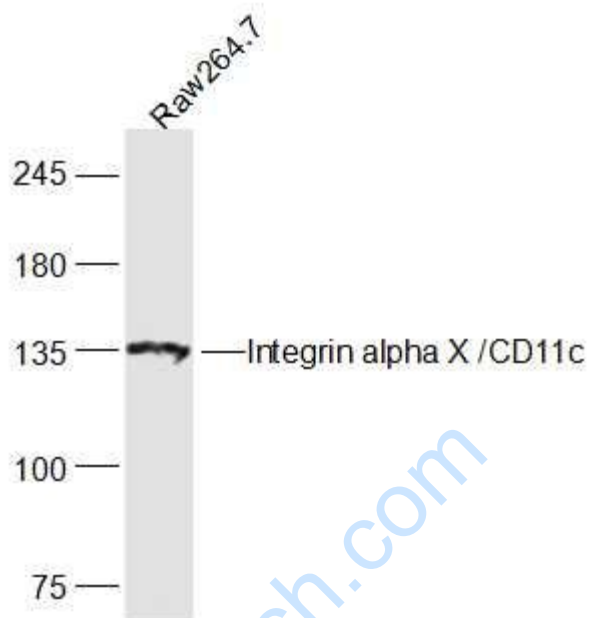
[Unigene: 248472](#)Human

[Unigene: 22378](#)Mouse

Important Note:

This product as supplied is intended for research use only, not for use in human, therapeutic or diagnostic applications.

Picture:



Sample:

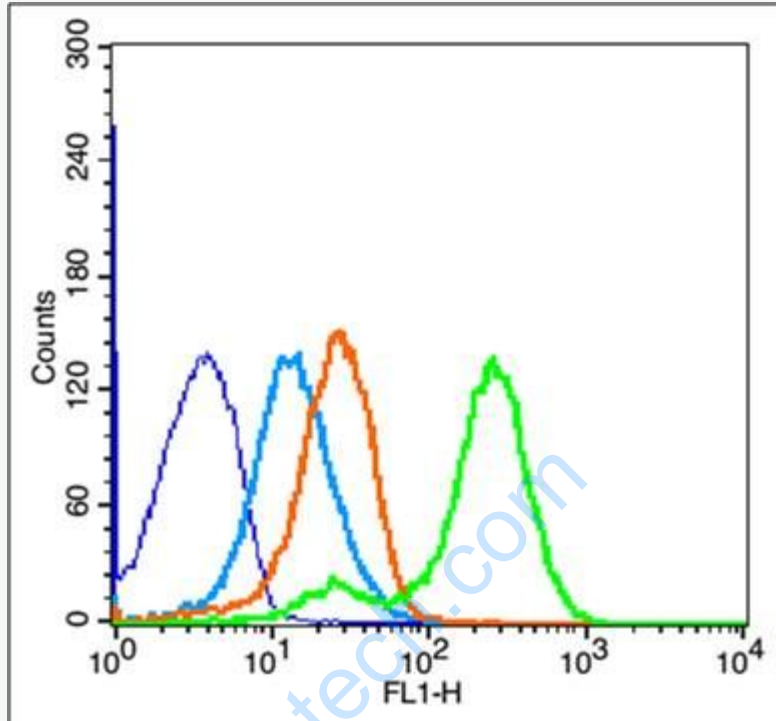
Raw264.7 (Mouse) Lysate at 30 ug

Primary: Anti-Integrin alpha X / CD11c (SL20690R) at 1/300 dilution

Secondary: IRDye800CW Goat Anti-Rabbit IgG at 1/20000 dilution

Predicted band size: 126 kD

Observed band size: 135 kD



Blank control: Mouse Spleen(fixed with 2% paraformaldehyde for 10 min at 37°C).

Primary Antibody:Rabbit Anti-Integrin alpha X /CD11c antibody (SL20690R);

Dilution: 1µg in 100 µL 1X PBS containing 0.5% BSA;

Isotype Control Antibody: Rabbit IgG(orange) ,used under the same conditions;

Secondary Antibody: Goat anti-rabbit IgG-FITC(white blue), Dilution: 1:200 in 1 X PBS containing 0.5% BSA.