



Rabbit Anti-IL-1R1 antibody

SL20697R

Product Name:	IL-1R1
Chinese Name:	白介素1受体1抗体
Alias:	Antigen CD121a; CD121 antigen-like family member A; CD121A; CD121a antigen; D2S1473; IL 1; IL 1R 1; IL 1R alpha; IL 1RT1; IL-1R-1; IL-1R-alpha; IL-1RT-1; IL-1RT1; IL1 inhibitor; IL1R; IL1R1; IL1R1_HUMAN; IL1RA; IL1RN; IL1RT1; Interleukin 1 receptor alpha type 1; Interleukin 1 receptor antagonist protein (IRAP); Interleukin 1 receptor type I; Interleukin receptor 1; Interleukin-1 receptor alpha; Interleukin-1 receptor type 1; Interleukin-1 receptor type I; P80; IL1 Receptor I; IL-1 Receptor I; Interleukin-1 receptor type 1, soluble form; IL-1 sRI.
Organism Species:	Rabbit
Clonality:	Polyclonal
React Species:	Human,Mouse,Dog,Pig,
Applications:	WB=1:500-2000ELISA=1:500-1000IHC-P=1:400-800IHC-F=1:400-800Flow-Cyt=1µg/testICC=1:100-500IF=1:100-500 (Paraffin sections need antigen repair) not yet tested in other applications. optimal dilutions/concentrations should be determined by the end user.
Molecular weight:	63kDa
Cellular localization:	The cell membraneSecretory protein
Form:	Lyophilized or Liquid
Concentration:	1mg/ml
immunogen:	KLH conjugated synthetic peptide derived from human IL-1R1:41-140/569<Extracellular>
Lsotype:	IgG
Purification:	affinity purified by Protein A
Storage Buffer:	0.01M TBS(pH7.4) with 1% BSA, 0.03% Proclin300 and 50% Glycerol.
Storage:	Store at -20 °C for one year. Avoid repeated freeze/thaw cycles. The lyophilized antibody is stable at room temperature for at least one month and for greater than a year when kept at -20°C. When reconstituted in sterile pH 7.4 0.01M PBS or diluent of antibody the antibody is stable for at least two weeks at 2-4 °C.
PubMed:	PubMed

The protein encoded by this gene is a cytokine receptor that belongs to the interleukin 1 receptor family. This protein is a receptor for interleukin alpha (IL1A), interleukin beta (IL1B), and interleukin 1 receptor, type I(IL1R1/IL1RA). It is an important mediator involved in many cytokine induced immune and inflammatory responses. This gene along with interleukin 1 receptor, type II(IL1R2), interleukin 1 receptor-like 2 (IL1RL2), and interleukin 1 receptor-like 1 (IL1RL1) form a cytokine receptor gene cluster in a region mapped to chromosome 2q12. [provided by RefSeq].

Function:

Receptor for IL1A, IL1B and IL1RN. After binding to interleukin-1 associates with the coreceptor IL1RAP to form the high affinity interleukin-1 receptor complex which mediates interleukin-1-dependent activation of NF-kappa-B, MAPK and other pathways. Signaling involves the recruitment of adapter molecules such as TOLLIP, MYD88, and IRAK1 or IRAK2 via the respective TIR domains of the receptor/coreceptor subunits. Binds ligands with comparable affinity and binding of antagonist IL1RN prevents association with IL1RAP to form a signaling complex.

Subunit:

The interleukin-1 receptor complex is a heterodimer of IL1R1 and IL1RAP.

Subcellular Location:

Membrane; Single-pass type I membrane protein. Cell membrane (Probable). Secreted.

Post-translational modifications:

A soluble form (sIL1R1) is probably produced by proteolytic cleavage at the cell surface (shedding).

Similarity:

Belongs to the interleukin-1 receptor family.
Contains 3 Ig-like C2-type (immunoglobulin-like) domains.
Contains 1 TIR domain.

SWISS:

P14778

Gene ID:

3554

Database links:

[Entrez Gene: 3554](#)Human

[Entrez Gene: 16177](#)Mouse

[Entrez Gene: 25663](#)Rat

Product Detail:

[Omim: 147810](#)Human

[SwissProt: P14778](#)Human

[SwissProt: P13504](#)Mouse

[SwissProt: Q02955](#)Rat

[Unigene: 516249](#)Human

[Unigene: 701982](#)Human

[Unigene: 896](#)Mouse

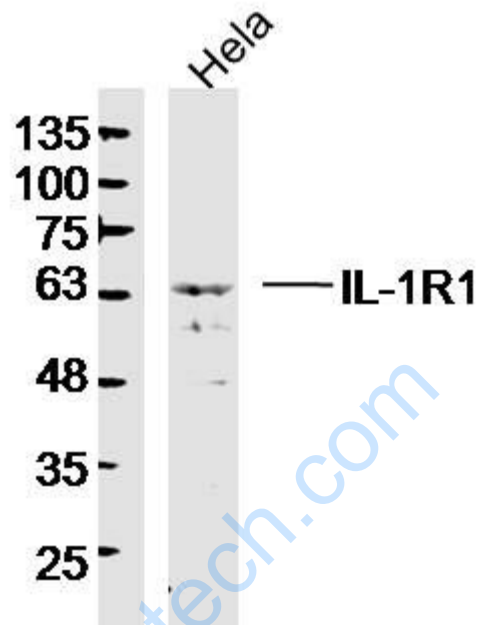
[Unigene: 9758](#)Rat

Important Note:

This product as supplied is intended for research use only, not for use in human, therapeutic or diagnostic applications.

IL-1R I 属于新的信号受体家族TollSignal transduction通路蛋白, IL-1R I 在免疫和炎症反应的研究中占重要地位, 是在很多感染、炎症性致病机制中起决定性作用的cell factor, 几乎可作用于全身各种细胞, IL-1与IL-1R1的结合可导致大量与免疫反应和炎症相关基因的表达, 包括cell factor、cell factor受体、急性期反应物、生长因子、胞外基质、粘附分子等。IL-1R1/NF- κ B信号通路是机体免疫反应中十分重要的组成部分。白介素1受体I型 Interleukin 1 receptor I(IL-1RI)

Picture:



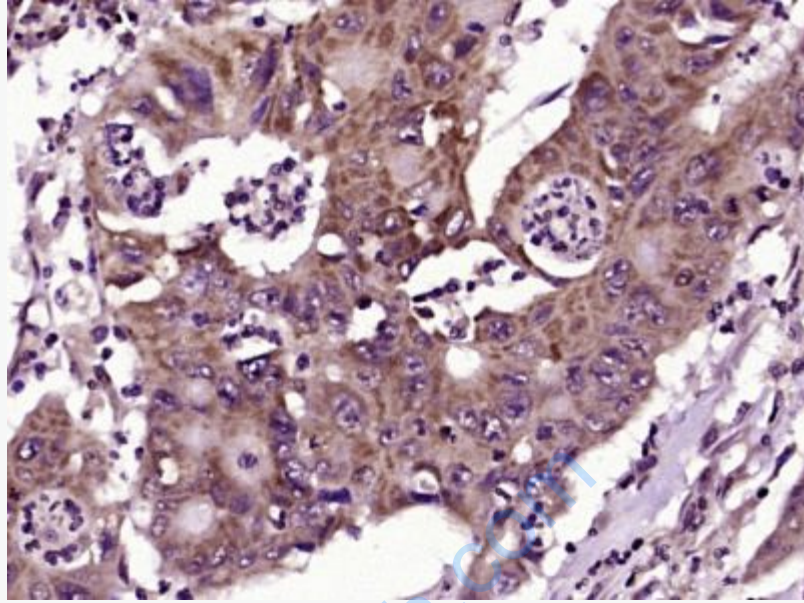
Sample: HeLa(human) Cell Lysate at 40 ug

Primary: Anti-IL-1R1 (SL20697R) at 1/300 dilution

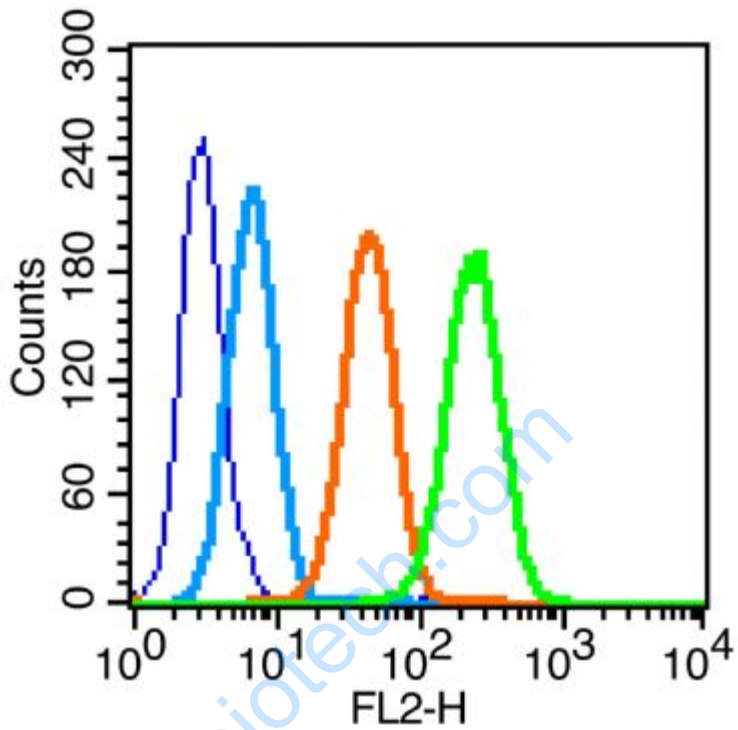
Secondary: IRDye800CW Goat Anti-Rabbit IgG at 1/20000 dilution

Predicted band size: 63 kD

Observed band size: 63 kD



Paraformaldehyde-fixed, paraffin embedded (human colon carcinoma); Antigen retrieval by boiling in sodium citrate buffer (pH6.0) for 15min; Block endogenous peroxidase by 3% hydrogen peroxide for 20 minutes; Blocking buffer (normal goat serum) at 37°C for 30min; Antibody incubation with (IL-1R1) Polyclonal Antibody, Unconjugated (SL20697R) at 1:400 overnight at 4°C, followed by operating according to SP Kit(Rabbit) (sp-0023) instructions and DAB staining.



Blank control (blue line): MCF7 (fixed with 70% methanol overnight at 4°C).

Primary Antibody (green line): Rabbit Anti-IL-1R1 receptor antibody (SL20697R)
,Dilution: 0.2 μ g / 10^6 cells;

Isotype Control Antibody (orange line): Rabbit IgG .

Secondary Antibody (white blue line): Goat anti-rabbit IgG-PE,Dilution: 1 μ g /test.