



## Rabbit Anti-IL-1R1 antibody

SL20698R

<b>Product Name:</b>	IL-1R1
<b>Chinese Name:</b>	白介素1受体1抗体
<b>Alias:</b>	Antigen CD121a; CD121 antigen-like family member A; CD121A; CD121a antigen; D2S1473; IL 1; IL 1R 1; IL 1R alpha; IL 1RT1; IL-1R-1; IL-1R-alpha; IL-1RT-1; IL-1RT1; IL1 inhibitor; IL1R; IL1R1; IL1R1_HUMAN; IL1RA; IL1RN; IL1RT1; Interleukin 1 receptor alpha type 1; Interleukin 1 receptor antagonist protein (IRAP); Interleukin 1 receptor type I; Interleukin receptor 1; Interleukin-1 receptor alpha; Interleukin-1 receptor type 1; Interleukin-1 receptor type I; P80; IL1 Receptor I; IL-1 Receptor I; Interleukin-1 receptor type 1, soluble form; IL-1 sRI.
<b>Organism Species:</b>	Rabbit
<b>Clonality:</b>	Polyclonal
<b>React Species:</b>	Human,Mouse,Rat,
<b>Applications:</b>	WB=1:500-2000ELISA=1:500-1000 not yet tested in other applications. optimal dilutions/concentrations should be determined by the end user.
<b>Molecular weight:</b>	63kDa
<b>Cellular localization:</b>	The cell membraneSecretory protein
<b>Form:</b>	Lyophilized or Liquid
<b>Concentration:</b>	1mg/ml
<b>immunogen:</b>	KLH conjugated synthetic peptide derived from mouse IL-1R1:251-350/576<Extracellular>
<b>Lsotype:</b>	IgG
<b>Purification:</b>	affinity purified by Protein A
<b>Storage Buffer:</b>	0.01M TBS(pH7.4) with 1% BSA, 0.03% Proclin300 and 50% Glycerol.
<b>Storage:</b>	Store at -20 °C for one year. Avoid repeated freeze/thaw cycles. The lyophilized antibody is stable at room temperature for at least one month and for greater than a year when kept at -20°C. When reconstituted in sterile pH 7.4 0.01M PBS or diluent of antibody the antibody is stable for at least two weeks at 2-4 °C.
<b>PubMed:</b>	<a href="#">PubMed</a>
<b>Product Detail:</b>	The protein encoded by this gene is a cytokine receptor that belongs to the interleukin 1

receptor family. This protein is a receptor for interleukin alpha (IL1A), interleukin beta (IL1B), and interleukin 1 receptor, type I(IL1R1/IL1RA). It is an important mediator involved in many cytokine induced immune and inflammatory responses. This gene along with interleukin 1 receptor, type II(IL1R2), interleukin 1 receptor-like 2 (IL1RL2), and interleukin 1 receptor-like 1 (IL1RL1) form a cytokine receptor gene cluster in a region mapped to chromosome 2q12. [provided by RefSeq].

**Function:**

Receptor for IL1A, IL1B and IL1RN. After binding to interleukin-1 associates with the coreceptor IL1RAP to form the high affinity interleukin-1 receptor complex which mediates interleukin-1-dependent activation of NF-kappa-B, MAPK and other pathways. Signaling involves the recruitment of adapter molecules such as TOLLIP, MYD88, and IRAK1 or IRAK2 via the respective TIR domains of the receptor/coreceptor subunits. Binds ligands with comparable affinity and binding of antagonist IL1RN prevents association with IL1RAP to form a signaling complex.

**Subunit:**

The interleukin-1 receptor complex is a heterodimer of IL1R1 and IL1RAP.

**Subcellular Location:**

Membrane; Single-pass type I membrane protein. Cell membrane (Probable). Secreted.

**Post-translational modifications:**

A soluble form (sIL1R1) is probably produced by proteolytic cleavage at the cell surface (shedding).

**Similarity:**

Belongs to the interleukin-1 receptor family.  
Contains 3 Ig-like C2-type (immunoglobulin-like) domains.  
Contains 1 TIR domain.

**SWISS:**

P14778

**Gene ID:**

16177

**Database links:**

[Entrez Gene: 3554](#)Human

[Entrez Gene: 16177](#)Mouse

[Entrez Gene: 25663](#)Rat

[Omim: 147810](#)Human

[SwissProt: P14778](#)Human

[SwissProt: P13504](#)Mouse

[SwissProt: Q02955](#)Rat

[Unigene: 516249](#)Human

[Unigene: 701982](#)Human

[Unigene: 896](#)Mouse

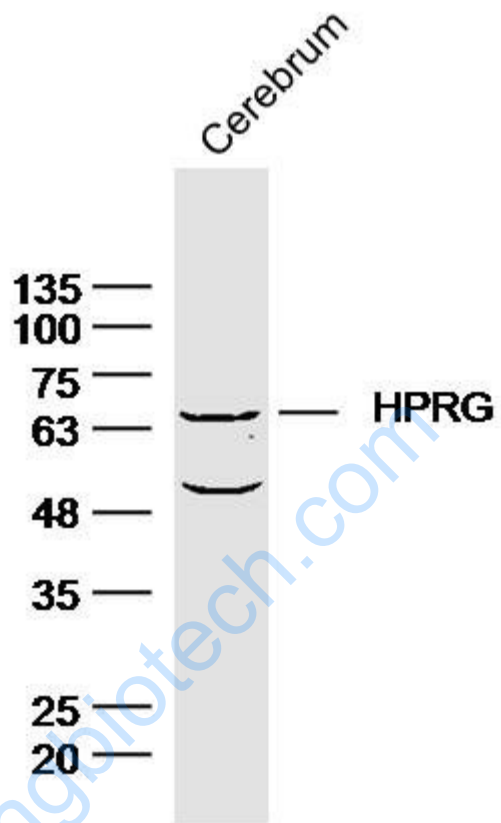
[Unigene: 9758](#)Rat

**Important Note:**

This product as supplied is intended for research use only, not for use in human, therapeutic or diagnostic applications.

IL-1R I 属于新的信号受体家族TollSignal transduction通路蛋白, IL-1R I 在免疫和炎症反应的研究中占重要地位, 是在很多感染、炎症性致病机制中起决定性作用的cell factor, 几乎可作用于全身各种细胞, IL-1与IL-1R1的结合可导致大量与免疫反应和炎症相关基因的表达, 包括cell factor、cell factor受体、急性期反应物、生长因子、胞外基质、粘附分子等。IL-1R1/NF- $\kappa$ B信号通路是机体免疫反应中十分重要的组成部分。白介素1受体I型 Interleukin 1 receptor I(IL-1RI)

Picture:



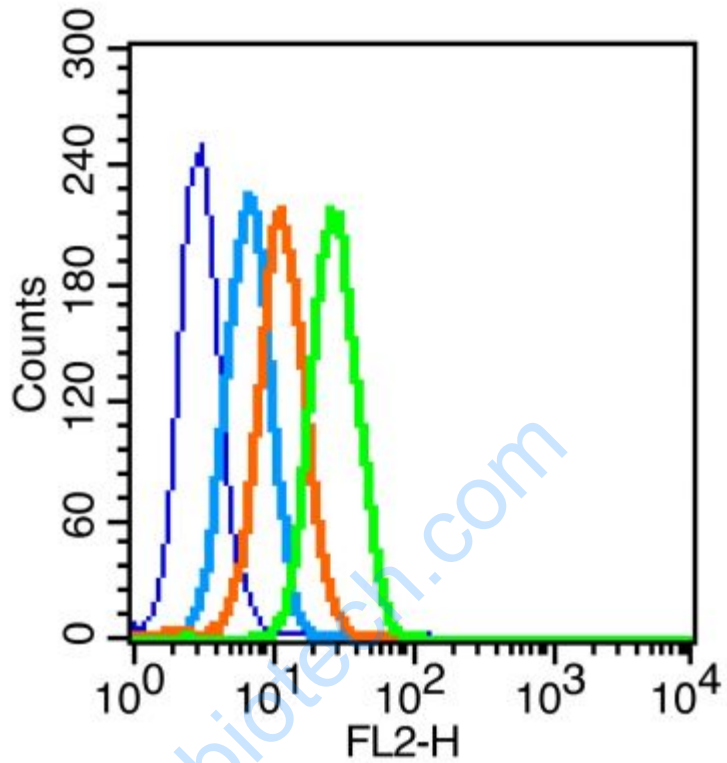
Sample: Cerebrum (Mouse) Lysate at 40 ug

Primary: Anti- Acid IL-1R1 (SL20698R) at 1/300 dilution

Secondary: IRDye800CW Goat Anti-Rabbit IgG at 1/20000 dilution

Predicted band size: 63 kD

Observed band size: 65 kD



Blank control (blue line): MCF7 (fixed with 70% methanol overnight at 4°C).

Primary Antibody (green line): Rabbit Anti-IL-1R1 antibody (SL20698R), Dilution:  
3 $\mu$ g / 10<sup>6</sup> cells;

Isotype Control Antibody (orange line): Rabbit IgG .

Secondary Antibody (white blue line): Goat anti-rabbit IgG-PE, Dilution: 1 $\mu$ g /test.