



## Rabbit Anti-IRS-2 antibody

SL20748R

<b>Product Name:</b>	IRS-2
<b>Chinese Name:</b>	胰岛素受体底物-2抗体
<b>Alias:</b>	Insulin Receptor Substrate 2; IRS 2; IRS-2; IRS2; IRS2 HUMAN.
<b>Organism Species:</b>	Rabbit
<b>Clonality:</b>	Polyclonal
<b>React Species:</b>	Human,Mouse,Rat,Horse,
<b>Applications:</b>	ELISA=1:500-1000IHC-P=1:400-800IHC-F=1:400-800Flow-Cyt=1µg/TestICC=1:100-500IF=1:100-500 (Paraffin sections need antigen repair) not yet tested in other applications. optimal dilutions/concentrations should be determined by the end user.
<b>Molecular weight:</b>	146kDa
<b>Cellular localization:</b>	cytoplasmic
<b>Form:</b>	Lyophilized or Liquid
<b>Concentration:</b>	1mg/ml
<b>immunogen:</b>	KLH conjugated synthetic peptide derived from human IRS-2:461-560/1338
<b>Lsotype:</b>	IgG
<b>Purification:</b>	affinity purified by Protein A
<b>Storage Buffer:</b>	0.01M TBS(pH7.4) with 1% BSA, 0.03% Proclin300 and 50% Glycerol.
<b>Storage:</b>	Store at -20 °C for one year. Avoid repeated freeze/thaw cycles. The lyophilized antibody is stable at room temperature for at least one month and for greater than a year when kept at -20°C. When reconstituted in sterile pH 7.4 0.01M PBS or diluent of antibody the antibody is stable for at least two weeks at 2-4 °C.
<b>PubMed:</b>	<a href="#">PubMed</a>
<b>Product Detail:</b>	This gene encodes the insulin receptor substrate 2, a cytoplasmic signaling molecule that mediates effects of insulin, insulin-like growth factor 1, and other cytokines by acting as a molecular adaptor between diverse receptor tyrosine kinases and downstream effectors. The product of this gene is phosphorylated by the insulin receptor tyrosine kinase upon receptor stimulation, as well as by an interleukin 4 receptor-associated kinase in response to IL4 treatment. [provided by RefSeq, Jul 2008]

**Function:**

May mediate the control of various cellular processes by insulin.

**Subunit:**

Interacts with PHIP.

**Subcellular Location:**

Cytoplasm, cytosol.

**Post-translational modifications:**

Phosphorylated upon DNA damage, probably by ATM or ATR.

**Similarity:**

Contains 1 IRS-type PTB domain.

Contains 1 PH domain.

**SWISS:**

Q9Y4H2

**Gene ID:**

8660

**Database links:**

[Entrez Gene: 8660](#)Human

[Entrez Gene: 384783](#)Mouse

[Entrez Gene: 29376](#)Rat

[Omim: 600797](#)Human

[SwissProt: Q9Y4H2](#)Human

[SwissProt: P81122](#)Mouse

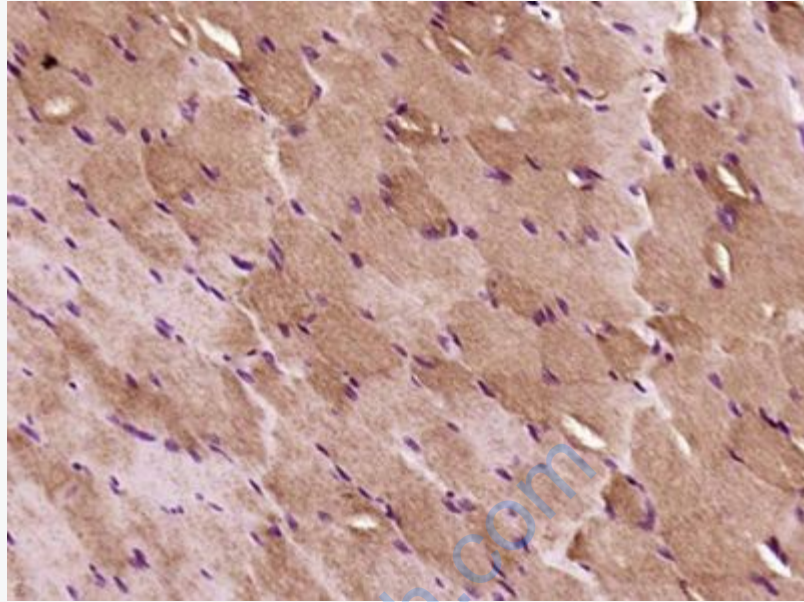
[Unigene: 442344](#)Human

[Unigene: 407207](#)Mouse

**Important Note:**

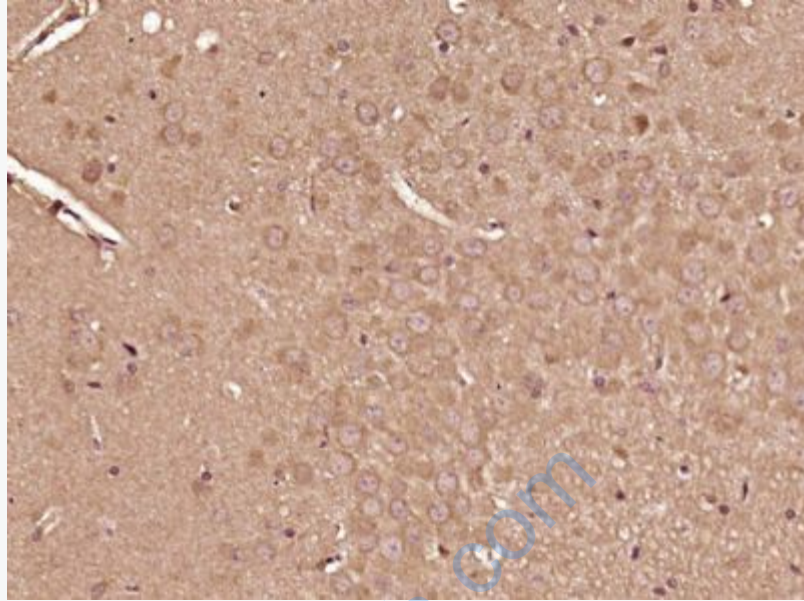
This product as supplied is intended for research use only, not for use in human, therapeutic or diagnostic applications.

IRS-2是肝胰岛素Signal transduction核心介子, IRS-2基因的缺失或IRS-2信号网络上一些关键信号分子的异常改变, 都将导致肝胰岛素Signal transduction能力减弱, 出现肝胰岛素抵抗.

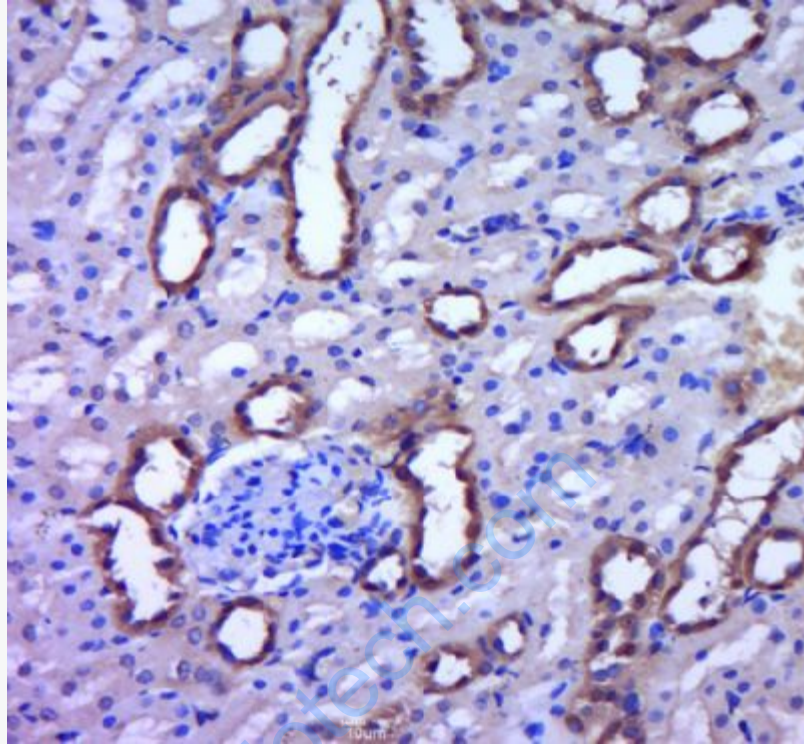


**Picture:**

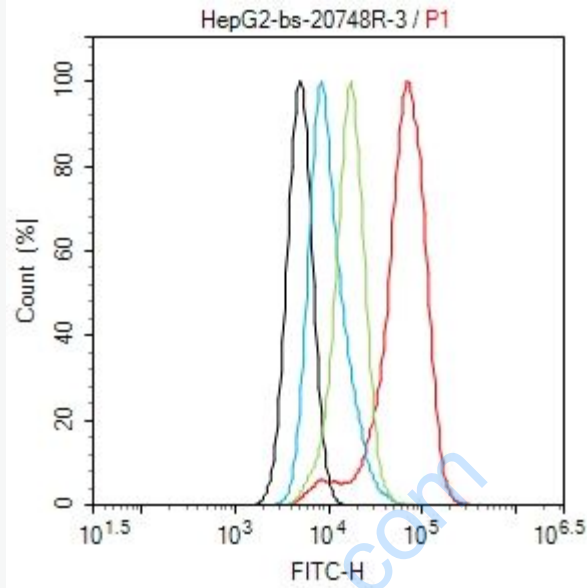
Paraformaldehyde-fixed, paraffin embedded (Rat skeletal muscle); Antigen retrieval by boiling in sodium citrate buffer (pH6.0) for 15min; Block endogenous peroxidase by 3% hydrogen peroxide for 20 minutes; Blocking buffer (normal goat serum) at 37°C for 30min; Antibody incubation with (IRS-2) Polyclonal Antibody, Unconjugated (SL20748R) at 1:400 overnight at 4°C, followed by operating according to SP Kit(Rabbit) (sp-0023) instructions and DAB staining.



Paraformaldehyde-fixed, paraffin embedded (Rat brain); Antigen retrieval by boiling in sodium citrate buffer (pH6.0) for 15min; Block endogenous peroxidase by 3% hydrogen peroxide for 20 minutes; Blocking buffer (normal goat serum) at 37°C for 30min; Antibody incubation with (IRS-2) Polyclonal Antibody, Unconjugated (SL20748R) at 1:500 overnight at 4°C, followed by a conjugated secondary (sp-0023) for 20 minutes and DAB staining.



Paraformaldehyde-fixed, paraffin embedded (rat kidney tissue); Antigen retrieval by boiling in sodium citrate buffer (pH6.0) for 15min; Block endogenous peroxidase by 3% hydrogen peroxide for 20 minutes; Blocking buffer (normal goat serum) at 37°C for 30min; Antibody incubation with (IRS-2) Polyclonal Antibody, Unconjugated (SL20748R) at 1:400 overnight at 4°C, followed by a conjugated secondary (sp-0023) for 20 minutes and DAB staining.



Blank control (Black line): Raji (Black).

Primary Antibody (red line): Rabbit Anti-IRS-2 antibody (SL20748R)

Dilution:  $1\mu\text{g} / 10^6$  cells;

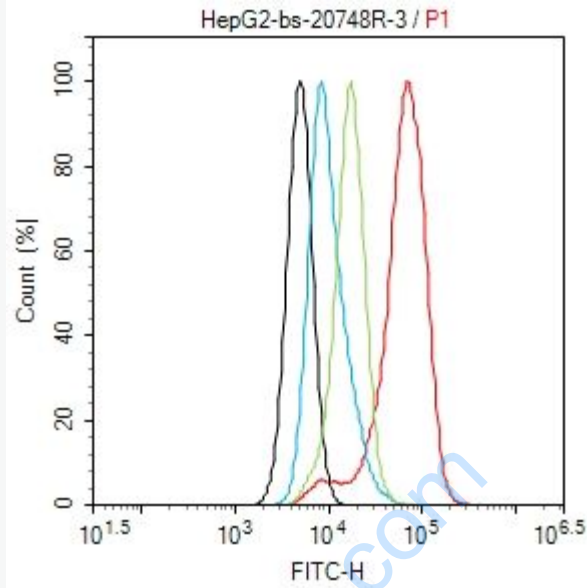
Isotype Control Antibody (green line): Rabbit IgG .

Secondary Antibody (white blue line): Goat anti-rabbit IgG-PE

Dilution:  $1\mu\text{g} / \text{test}$ .

#### Protocol

The cells were fixed with 4% PFA (10min) and then permeabilized with 0.1% PBS-Tween for 20 min at room temperature . Cells stained with Primary Antibody for 30 min at room temperature. The cells were then incubated in 1 X PBS/2%BSA/10% goat serum to block non-specific protein-protein interactions followed by the antibody for 15 min at room temperature. The secondary antibody used for 40 min at room temperature. Acquisition of 20,000 events was performed.



Blank control (black line): HepG2(black) (The cells were fixed with 2% paraformaldehyde (10 min) , then permeabilized with PBST for 30 min on room temperature)

Primary Antibody (Red line): Rabbit Anti-IRS-2 antibody (SL20748R) ; Dilution:  $1\mu\text{g} / 10^6$  cells;

Isotype Control Antibody (green line): Rabbit IgG .

Secondary Antibody (white blue line): Goat anti-rabbit IgG-FITC;Dilution:  $1\mu\text{g} / \text{test}$ .