



## Rabbit Anti-PTPRN2 antibody

SL20830R

<b>Product Name:</b>	PTPRN2
<b>Chinese Name:</b>	胰岛细胞自身抗原相关蛋白PTPRN2抗体
<b>Alias:</b>	IA 2beta; IA2beta; IAR; IAR/receptor like protein tyrosine phosphatase; ICAAR; Islet cell autoantigen related protein; Islet cell autoantigen-related protein; Phogrin; Protein tyrosine phosphatase receptor pi; Protein tyrosine phosphatase, receptor type, N polypeptide 2; PTPR2_HUMAN; Ptpn2; PTPRP; R PTP N2; R-PTP-N2; Receptor-type tyrosine-protein phosphatase N2; Tyrosine phosphatase IA 2 beta.
<b>Organism Species:</b>	Rabbit
<b>Clonality:</b>	Polyclonal
<b>React Species:</b>	Mouse,Rat,
<b>Applications:</b>	WB=1:500-2000ELISA=1:500-1000IHC-P=1:400-800IHC-F=1:400-800ICC=1:100-500IF=1:100-500 (Paraffin sections need antigen repair) not yet tested in other applications. optimal dilutions/concentrations should be determined by the end user.
<b>Molecular weight:</b>	109kDa
<b>Cellular localization:</b>	The cell membrane
<b>Form:</b>	Lyophilized or Liquid
<b>Concentration:</b>	1mg/ml
<b>immunogen:</b>	KLH conjugated synthetic peptide derived from mouse PTPRN2:521-620/1015<Extracellular>
<b>Lsotype:</b>	IgG
<b>Purification:</b>	affinity purified by Protein A
<b>Storage Buffer:</b>	Preservative: 15mM Sodium Azide, Constituents: 1% BSA, 0.01M PBS, pH 7.4
<b>Storage:</b>	Store at -20 °C for one year. Avoid repeated freeze/thaw cycles. The lyophilized antibody is stable at room temperature for at least one month and for greater than a year when kept at -20°C. When reconstituted in sterile pH 7.4 0.01M PBS or diluent of antibody the antibody is stable for at least two weeks at 2-4 °C.
<b>PubMed:</b>	<a href="#">PubMed</a>
<b>Product Detail:</b>	The protein encoded by this gene is a member of the protein tyrosine phosphatase (PTP) family. PTPs are known to be signaling molecules that regulate a variety of cellular

processes including cell growth, differentiation, mitotic cycle, and oncogenic transformation. This PTP possesses an extracellular region, a single transmembrane region, and a single intracellular catalytic domain, and thus represents a receptor-type PTP. The catalytic domain of this PTP is most closely related to PTPRN/IA-2beta. This PTP and PTPRN are both found to be major autoantigens associated with insulin-dependent diabetes mellitus. Three alternatively spliced transcript variants of this gene, which encode distinct proteins, have been reported. [provided by RefSeq, Jul 2008]

**Function:**

Implicated in development of nervous system and pancreatic endocrine cells.

**Subcellular Location:**

Membrane.

**Tissue Specificity:**

Highest levels in brain and pancreas. Lower levels in trachea, prostate, stomach and spinal chord.

**Post-translational modifications:**

Appears to undergo multiple proteolytic cleavage at consecutive basic residues. Similarity : Belongs to the protein-tyrosine phosphatase family. Receptor class 8 subfamily. Contains 1 tyrosine-protein phosphatase domain.

**SWISS:**

P80560

**Gene ID:**

19276

**Database links:**

[Entrez Gene: 5799](#)Human

[Entrez Gene: 19276](#)Mouse

[Entrez Gene: 29714](#)Rat

[Omim: 601698](#)Human

[SwissProt: Q92932](#)Human

[SwissProt: P80560](#)Mouse

[SwissProt: Q63475](#)Rat

[Unigene: 490789](#)Human

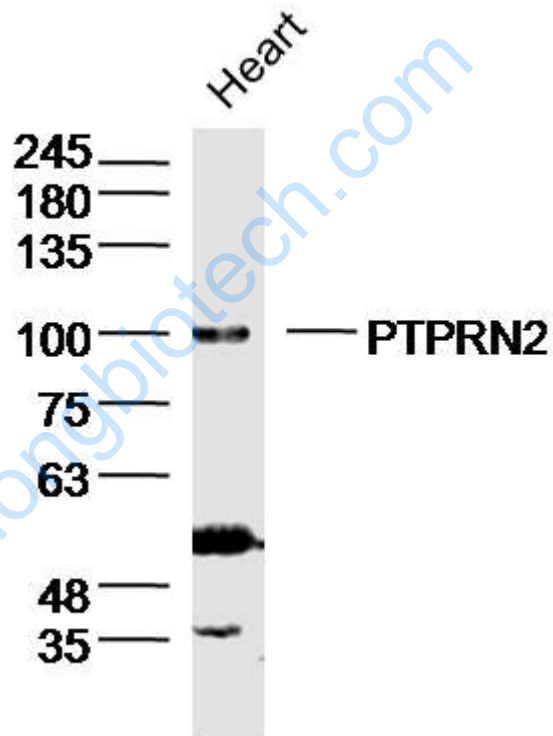
[Unigene: 206054](#)Mouse

[Unigene: 11044](#)Rat

**Important Note:**

This product as supplied is intended for research use only, not for use in human, therapeutic or diagnostic applications.

Picture:



Sample: Heart (Mouse)Lysate at 40 ug

Primary: Anti-PTPRN2(SL20830R)at 1/300 dilution

Secondary: IRDye800CW Goat Anti-RabbitIgG at 1/20000 dilution

Predicted band size: 109kD

Observed band size: 109kD