



## Rabbit Anti-LY6E antibody

SL20838R

<b>Product Name:</b>	LY6E
<b>Chinese Name:</b>	Tlymphocyte激活蛋白抗体
<b>Alias:</b>	Ly 6E; Ly6A.2; Ly6A/E; Ly6E.1; Lymphocyte antigen 6 complex locus A; Lymphocyte antigen 6 complex locus E; Lymphocyte antigen 6E; OTTHUMP00000227386; OTTHUMP00000227387; OTTHUMP00000227407; OTTHUMP00000227411; OTTHUMP00000227413; OTTHUMP00000227414; OTTHUMP00000227415; OTTHUMP00000227416; OTTHUMP00000227418; OTTHUMP00000227419; Retinoic acid induced gene E; Retinoic acid induced gene E protein; RIG E; RIGE; SCA 2; Sca1; Sca2; Stem cell antigen 1; Stem cell antigen 2; T cell activating protein; TAP; Thymic shared antigen 1; TSA 1; TSA1
<b>Organism Species:</b>	Rabbit
<b>Clonality:</b>	Polyclonal
<b>React Species:</b>	Mouse,Rat,
<b>Applications:</b>	WB=1:500-2000ELISA=1:500-1000 not yet tested in other applications. optimal dilutions/concentrations should be determined by the end user.
<b>Molecular weight:</b>	14kDa
<b>Cellular localization:</b>	The cell membrane
<b>Form:</b>	Lyophilized or Liquid
<b>Concentration:</b>	1mg/ml
<b>immunogen:</b>	KLH conjugated synthetic peptide derived from mouse LY6E:31-80/131
<b>Lsotype:</b>	IgG
<b>Purification:</b>	affinity purified by Protein A
<b>Storage Buffer:</b>	Preservative: 15mM Sodium Azide, Constituents: 1% BSA, 0.01M PBS, pH 7.4
<b>Storage:</b>	Store at -20 °C for one year. Avoid repeated freeze/thaw cycles. The lyophilized antibody is stable at room temperature for at least one month and for greater than a year when kept at -20°C. When reconstituted in sterile pH 7.4 0.01M PBS or diluent of antibody the antibody is stable for at least two weeks at 2-4 °C.
<b>PubMed:</b>	<a href="#">PubMed</a>
<b>Product Detail:</b>	Sca1, also known as Ly6A/E, is a member of the Ly6 multigene family of type V

glycophosphatidylinositol anchored cell surface proteins. It is expressed on multipotent hematopoietic stem cells in bone marrow of mice with both the Ly6.1 and Ly6.2 allotypes. In the periphery, Sca1 exhibits a pattern of expression which is based on differences between the two allotypes. Ly6.1 strains (e.g., A, BALB/c, CBA, C3H/He, DBA/1, NZB) have few Sca1+ resting peripheral lymphocytes, whereas Ly6.2 strains (e.g., AKR, C57BL, C57BR, C57L, DBA/2, PL, SJL, SWR, 129) have relatively high numbers of Sca1+ lymphocytes. The expression of Sca1 is dramatically upregulated in all strains upon cellular activation.

**Function:**

T-cell activation.

**Tissue Specificity:**

Widely expressed, predominantly in liver, kidney, ovary, spleen and peripheral blood Leukocytes.

**Similarity:**

Contains 1 UPAR/Ly6 domain.

**SWISS:**

Q64253

**Gene ID:**

17069

**Database links:**

[Entrez Gene: 17069](#)Mouse

[SwissProt: Q64253](#)Mouse

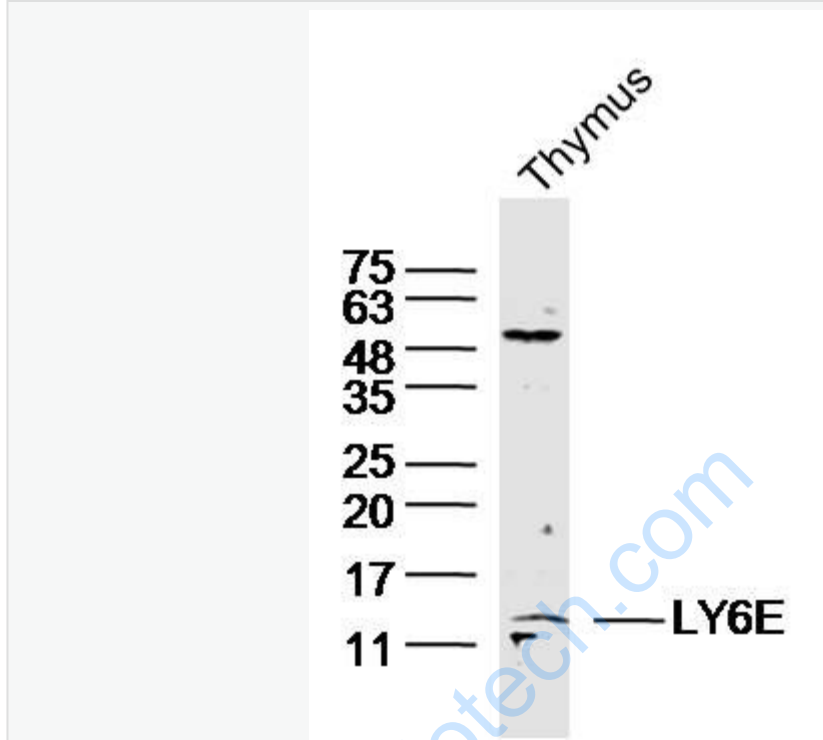
[Unigene: 788](#)Mouse

[Unigene: 3321](#)Rat

**Important Note:**

This product as supplied is intended for research use only, not for use in human, therapeutic or diagnostic applications.

Picture:



Sample: Thymus (Mouse) Lysate at 40 ug

Primary: Anti-LY6E(SL20838R) at 1/300 dilution

Secondary: IRDye800CW Goat Anti-Rabbit IgG at 1/20000 dilution

Predicted band size: 14kD

Observed band size: 14kD