



## Rabbit Anti-NHEDC1 antibody

SL20859R

<b>Product Name:</b>	NHEDC1
<b>Chinese Name:</b>	钠/氢交换样结构域蛋白1抗体
<b>Alias:</b>	1700094G20Rik; 4933424B12Rik; 4933425K02Rik; AV258602; MGC131641; Na(+)/H(+) exchanger-like domain-containing protein 1; NHDC1_MOUSE; NHE domain-containing protein 1; Nhedc1; Sodium/hydrogen exchanger-like domain-containing protein 1.
<b>Organism Species:</b>	Rabbit
<b>Clonality:</b>	Polyclonal
<b>React Species:</b>	Mouse,
<b>Applications:</b>	WB=1:500-2000ELISA=1:500-1000IHC-P=1:400-800IHC-F=1:400-800ICC=1:100-500IF=1:100-500 (Paraffin sections need antigen repair) not yet tested in other applications. optimal dilutions/concentrations should be determined by the end user.
<b>Molecular weight:</b>	62kDa
<b>Cellular localization:</b>	The cell membrane
<b>Form:</b>	Lyophilized or Liquid
<b>Concentration:</b>	1mg/ml
<b>immunogen:</b>	KLH conjugated synthetic peptide derived from mouse NHEDC1:51-150/565
<b>Lsotype:</b>	IgG
<b>Purification:</b>	affinity purified by Protein A
<b>Storage Buffer:</b>	0.01M TBS(pH7.4) with 1% BSA, 0.03% Proclin300 and 50% Glycerol.
<b>Storage:</b>	Store at -20 °C for one year. Avoid repeated freeze/thaw cycles. The lyophilized antibody is stable at room temperature for at least one month and for greater than a year when kept at -20°C. When reconstituted in sterile pH 7.4 0.01M PBS or diluent of antibody the antibody is stable for at least two weeks at 2-4 °C.
<b>PubMed:</b>	<a href="#">PubMed</a>
<b>Product Detail:</b>	The protein encoded by this gene is a sodium/hydrogen exchanger and transmembrane protein. Highly conserved orthologs of this gene have been found in other mammalian species. The expression of this gene may be limited to testis. Multiple transcript variants encoding different isoforms have been found for this gene. [provided by RefSeq, Jul

2010]

**Subcellular Location:**

Membrane.

**Tissue Specificity:**

Expressed only in the testis.

**Similarity:**

Belongs to the monovalent cation:proton antiporter 1 (CPA1) transporter (TC 2.A.36) family.

**SWISS:**

Q8C0X2

**Gene ID:**

74446

**Database links:**

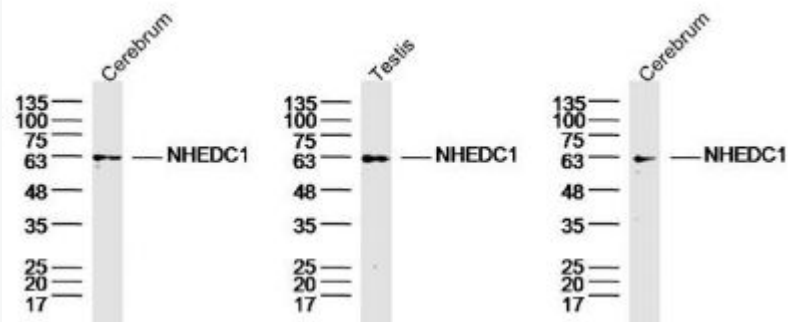
[Entrez Gene: 74446](#)Mouse

[SwissProt: Q8C0X2](#)Mouse

**Important Note:**

This product as supplied is intended for research use only, not for use in human, therapeutic or diagnostic applications.

**Picture:**



**Sample:**

Cerebrum (Mouse) Lysate at 40 ug

Testis (Mouse) Lysate at 40 ug

Cerebrum (Rat) Lysate at 40 ug

Primary: Anti- NHEDC1 (SL20859R) at 1/300 dilution

Secondary: IRDye800CW Goat Anti-Rabbit IgG at 1/20000 dilution

Predicted band size: 62 kD

Observed band size: 62 kD

[www.sunlongbiotech.com](http://www.sunlongbiotech.com)