



Rabbit Anti-SLC23A3 antibody

SL20881R

Product Name:	SLC23A3
Chinese Name:	溶质载体家族蛋白23成员A3抗体
Alias:	E2 binding protein 3; E2BP3; FLJ31168; HPC E2 binding protein 3; HPC E2-binding protein 3; Na(+)/ Lascorbic acid transporter 3; Na(+)/L-ascorbic acid transporter 3; S23A3; S23A3_MOUSE; Slc23a3; Sodium dependent vitamin C transporter 3; Sodium-dependent vitamin C transporter 3; Solute carrier family 23 member 3; Solute carrier family 23 nucleobase transporters member 3; SVCT3; Yspl1.
Organism Species:	Rabbit
Clonality:	Polyclonal
React Species:	Mouse,
Applications:	WB=1:500-2000ELISA=1:500-1000IHC-P=1:400-800IHC-F=1:400-800ICC=1:100-500IF=1:100-500 (Paraffin sections need antigen repair) not yet tested in other applications. optimal dilutions/concentrations should be determined by the end user.
Molecular weight:	65kDa
Cellular localization:	The cell membrane
Form:	Lyophilized or Liquid
Concentration:	1mg/ml
immunogen:	KLH conjugated synthetic peptide derived from mouse SLC23A3:201-300/611<Extracellular>
Lsotype:	IgG
Purification:	affinity purified by Protein A
Storage Buffer:	0.01M TBS(pH7.4) with 1% BSA, 0.03% Proclin300 and 50% Glycerol.
Storage:	Store at -20 °C for one year. Avoid repeated freeze/thaw cycles. The lyophilized antibody is stable at room temperature for at least one month and for greater than a year when kept at -20°C. When reconstituted in sterile pH 7.4 0.01M PBS or diluent of antibody the antibody is stable for at least two weeks at 2-4 °C.
PubMed:	PubMed
Product Detail:	SLC23A3 (Solute Carrier Family 23, Member 3) is a Protein Coding gene. Diseases associated with SLC23A3 include epilepsy, generalized, with febrile seizures plus, type

5. GO annotations related to this gene include transporter activity. An important paralog of this gene is SLC23A1.

Subcellular Location:

Membrane.

Similarity:

Belongs to the xanthine/uracil permease family. Nucleobase:cation symporter-2 (NCS2) (TC 2.A.40) subfamily.

SWISS:

Q6PIS1

Gene ID:

151295

Database links:

[Entrez Gene: 151295](#)Human

[Entrez Gene: 22626](#)Mouse

[Entrez Gene: 367298](#)Rat

[SwissProt: Q6PIS1](#)Human

[SwissProt: Q60850](#)Mouse

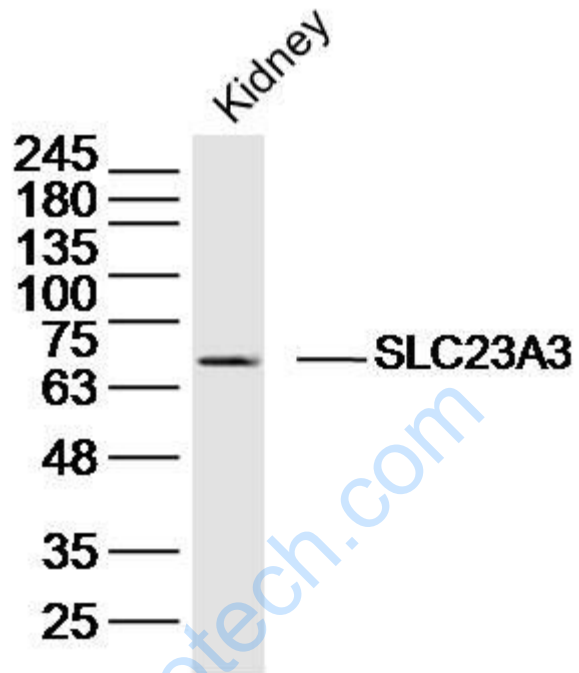
[Unigene: 124565](#)Human

[Unigene: 68157](#)Mouse

Important Note:

This product as supplied is intended for research use only, not for use in human, therapeutic or diagnostic applications.

Picture:



Sample: Kidney (Mouse) Lysate at 40 ug

Primary: Anti-SLC23A3 (SL20881R) at 1/300 dilution

Secondary: IRDye800CW Goat Anti-Rabbit IgG at 1/20000 dilution

Predicted band size: 65 kD

Observed band size: 65 kD