



Rabbit Anti-IL28 Receptor alpha antibody

SL20896R

Product Name:	IL28 Receptor alpha
Chinese Name:	白細胞介素28受体 α 抗体
Alias:	Class II cytokine receptor CRF2/12; CRF2-12; CRF2/12; Cytokine receptor class-II member 12; Cytokine receptor family 2 member 12; IFN lambda R1; IFN-lambda receptor 1; IFNLR; IFNLR1; IL-28 receptor subunit alpha; il-28r1; IL28R alpha; IL28RA; Interferon lambda receptor; Interferon lambda receptor 1; interleukin 28 alpha receptor; interleukin 28 receptor A; Interleukin 28 receptor alpha chain; interleukin 28 receptor, alpha (interferon, lambda receptor); Interleukin 28 receptor, alpha; interleukin or cytokine receptor 2; Interleukin-28 receptor subunit alpha; LICR2; Likely interleukin or cytokine receptor 2.
Organism Species:	Rabbit
Clonality:	Polyclonal
React Species:	Human,Mouse,
Applications:	WB=1:500-2000ELISA=1:500-1000IHC-P=1:400-800IHC-F=1:400-800ICC=1:100-500IF=1:100-500 (Paraffin sections need antigen repair) not yet tested in other applications. optimal dilutions/concentrations should be determined by the end user.
Molecular weight:	56kDa
Cellular localization:	The cell membrane
Form:	Lyophilized or Liquid
Concentration:	1mg/ml
immunogen:	KLH conjugated synthetic peptide derived from mouse IL28 Receptor alpha:21-120/520<Extracellular>
Lsotype:	IgG
Purification:	affinity purified by Protein A
Storage Buffer:	0.01M TBS(pH7.4) with 1% BSA, 0.03% Proclin300 and 50% Glycerol.
Storage:	Store at -20 °C for one year. Avoid repeated freeze/thaw cycles. The lyophilized antibody is stable at room temperature for at least one month and for greater than a year when kept at -20°C. When reconstituted in sterile pH 7.4 0.01M PBS or diluent of antibody the antibody is stable for at least two weeks at 2-4 °C.

PubMed:	PubMed
Product Detail:	<p>The protein encoded by this gene belongs to the class II cytokine receptor family. This protein forms a receptor complex with interleukin 10 receptor, beta (IL10RB). The receptor complex has been shown to interact with three closely related cytokines, including interleukin 28A (IL28A), interleukin 28B (IL28B), and interleukin 29 (IL29). The expression of all three cytokines can be induced by viral infection. The cells overexpressing this protein have been found to have enhanced responses to IL28A and IL29, but decreased response to IL28B. Three alternatively spliced transcript variants encoding distinct isoforms have been reported. [provided by RefSeq, Jul 2008]</p> <p>Function: IL28RA is a class II cytokine receptor that interacts with IL10RB to bind IL28A, IL28B, and IL29, which are related to type I interferons. These ligands play a critical role in response to microbial challenge and activate the JAK/STAT signaling system. It heterodimers with IL10RB. There are 4 isoforms as result of alternative splicing. It is widely expressed. IL28RA belongs to the type II cytokine receptor family, and contains 1 fibronectin type III domain.</p> <p>Subunit: Heterodimer with IL10RB.</p> <p>Subcellular Location: Membrane; Single-pass type I membrane protein</p> <p>Tissue Specificity: Widely expressed.</p> <p>Similarity: Belongs to the type II cytokine receptor family. Contains 1 fibronectin type-III domain.</p> <p>SWISS: Q8IU57</p> <p>Gene ID: 242700</p> <p>Database links:</p> <p>Entrez Gene: 163702Human</p> <p>Entrez Gene: 242700Mouse</p> <p>Entrez Gene: 362628Rat</p> <p>Omim: 607404Human</p>

[SwissProt: Q8IU57](#)Human

[SwissProt: Q8CGK5](#)Mouse

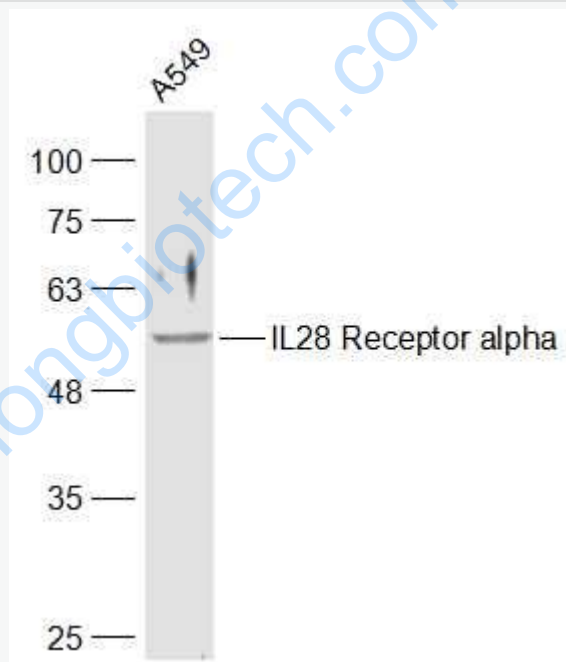
[Unigene: 221375](#)Human

[Unigene: 259623](#)Mouse

Important Note:

This product as supplied is intended for research use only, not for use in human, therapeutic or diagnostic applications.

Picture:



Sample:

A549(Human) Cell Lysate at 30 ug

Primary: Anti-IL28 Receptor alpha (SL20896R) at 1/300 dilution

Secondary: IRDye800CW Goat Anti-Rabbit IgG at 1/20000 dilution

Predicted band size: 56 kD

Observed band size: 56 kD

