



Rabbit Anti-Integrin alpha 3 antibody

SL2093R

Product Name:	Integrin alpha 3
Chinese Name:	整合素 α 3抗体
Alias:	Integrin alpha 3 light chain; AA407068; Antigen identified by monoclonal; Integrin alpha-3; J143; CD49 antigen like family member C; CD49 antigen-like family member C; CD49c; CD49c antigen; FLJ34631; FLJ34704; FRP 2; FRP-2; FRP2; Galactoprotein B3; GAP B3; GAPB3; Integrin alpha 3; Integrin alpha-3 light chain; Integrin, alpha 3 (antigen CD49C, alpha 3 subunit of VLA-3 receptor); ITA3_HUMAN; ITGA 3; Itga3; MSK18; VCA 2; VCA2; Very late activation protein 3 receptor alpha 3 subunit; VL3A; VLA 3 alpha chain; VLA 3 subunit alpha; VLA-3 subunit alpha; VLA3a.
Organism Species:	Rabbit
Clonality:	Polyclonal
React Species:	Human,Mouse,Rat,Pig,
Applications:	WB=1:500-2000ELISA=1:500-1000Flow-Cyt=1 μ g /test not yet tested in other applications. optimal dilutions/concentrations should be determined by the end user.
Molecular weight:	20/114kDa
Cellular localization:	The cell membrane
Form:	Lyophilized or Liquid
Concentration:	1mg/ml
immunogen:	KLH conjugated synthetic peptide derived from human Integrin alpha 3 light chain:976-1025/1051
Lsotype:	IgG
Purification:	affinity purified by Protein A
Storage Buffer:	0.01M TBS(pH7.4) with 1% BSA, 0.03% Proclin300 and 50% Glycerol.
Storage:	Store at -20 °C for one year. Avoid repeated freeze/thaw cycles. The lyophilized antibody is stable at room temperature for at least one month and for greater than a year when kept at -20°C. When reconstituted in sterile pH 7.4 0.01M PBS or diluent of antibody the antibody is stable for at least two weeks at 2-4 °C.
PubMed:	PubMed
Product Detail:	The protein encoded by this gene belongs to the family of integrins. Integrins are

heterodimeric integral membrane proteins composed of an alpha chain and a beta chain, and function as cell surface adhesion molecules. This gene encodes alpha 3 subunit, which undergoes post-translational cleavage in the extracellular domain to yield disulfide-linked light and heavy chains that join with beta 1 subunit to form an integrin that interacts with many extracellular-matrix proteins. Alternatively spliced transcript variants encoding different isoforms have been identified for this gene. [provided by RefSeq, Oct 2008]

Function:

Integrin alpha-3/beta-1 is a receptor for fibronectin, laminin, collagen, epiligrin, thrombospondin and CSPG4. Alpha-3/beta-1 may mediate with LGALS3 the stimulation by CSPG4 of endothelial cells migration.

Subunit:

Heterodimer of an alpha and a beta subunit. The alpha subunit is composed of an heavy and a light chain linked by a disulfide bond. Alpha-3 associates with beta-1. Interacts with HPS5.

Subcellular Location:

Membrane; Single-pass type I membrane protein.

Tissue Specificity:

Isoform 1 is widely expressed. Isoform 2 is expressed in brain and heart. In brain, both isoforms are exclusively expressed on vascular smooth muscle cells, whereas in heart isoform 1 is strongly expressed on vascular smooth muscle cells, isoform 2 is detected only on endothelial vein cells.

Post-translational modifications:

Isoform 1, but not isoform 2, is phosphorylated on serine residues. Phosphorylation increases after phorbol 12-myristate 13-acetate stimulation.

Similarity:

Belongs to the integrin alpha chain family.
Contains 7 FG-GAP repeats.

SWISS:

P26006

Gene ID:

3675

Database links:

[Entrez Gene: 508490](#) Cow

[Entrez Gene: 491074](#) Dog

[Entrez Gene: 100056202](#) Horse

[Entrez Gene: 3675](#) Human

[Entrez Gene: 100386753](#) Marmoset (common)

[Entrez Gene: 16400](#) Mouse

[Omim: 605025](#) Human

[SwissProt: F1MMS9](#) Cow

[SwissProt: P26006](#) Human

[SwissProt: Q62470](#) Mouse

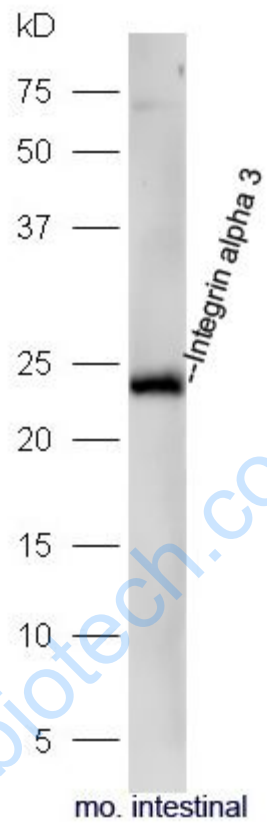
[Unigene: 265829](#) Human

[Unigene: 57035](#) Mouse

Important Note:

This product as supplied is intended for research use only, not for use in human, therapeutic or diagnostic applications.

Picture:



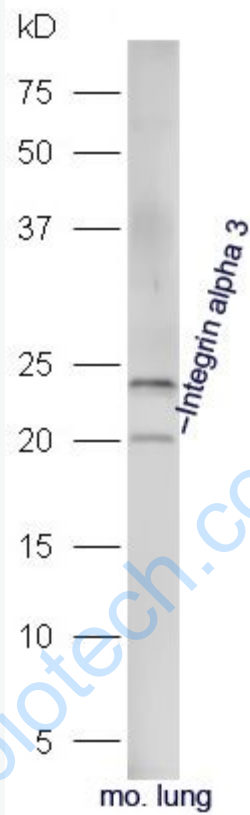
Sample: Intestinal(Mouse) lysate at 30ug;

Primary: Anti-Integrin alpha 3 (SL2093R) at 1:300 dilution;

Secondary: HRP conjugated Goat-Anti-rabbit IgG(SL2093R) at 1: 5000 dilution;

Predicted band size: 20/114 kD

Observed band size: 24 kD



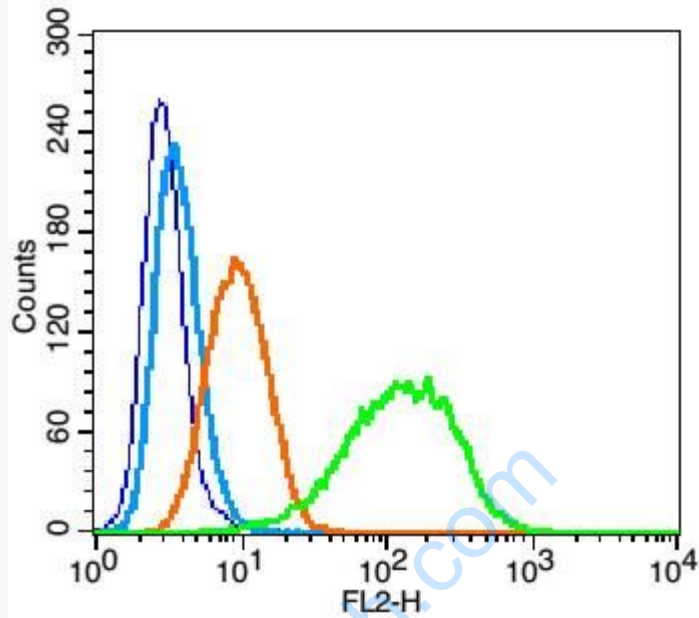
Sample: Lung(Mouse) lysate at 30ug;

Primary: Anti-Integrin alpha 3 (SL2093R) at 1:300 dilution;

Secondary: HRP conjugated Goat-Anti-rabbit IgG(SL2093R) at 1: 5000 dilution;

Predicted band size: 20/114 kD

Observed band size: 20 kD



Blank control: U937(blue).

Primary Antibody: Rabbit Anti-Integrin alpha 3 antibody(SL2093R), Dilution: 1 μ g in 100 μ L 1X PBS containing 0.5% BSA;

Isotype Control Antibody: Rabbit IgG(orange) ,used under the same conditions);

Secondary Antibody: Goat anti-rabbit IgG-PE(white blue), Dilution: 1:200 in 1 X PBS containing 0.5% BSA.

Protocol

The cells were fixed with 2% paraformaldehyde (10 min). Primary antibody (SL2093R) were incubated for 30 min on the ice, followed by 1 X PBS containing 0.5% BSA + 10% goat serum (15 min) to block non-specific protein-protein interactions. Then the Goat Anti-rabbit IgG/PE antibody was added into the blocking buffer mentioned above to react with the primary antibody at 1/200 dilution for 30 min on ice. Acquisition of 20,000 events was performed.

