



Rabbit Anti-Angiotensin II Type 1 Receptor antibody

SL2097R

Product Name:	Angiotensin II Type 1 Receptor
Chinese Name:	血管紧张素 II -1型受体抗体
Alias:	AG2S; Agtr 1; Agtr1; Agtr1a; AGTR1B; Angiotensin II receptor type 1; AT-1B; AT-1r; AT1; At1a; AT1AR; AT1B; AT1BR; AT2R1; AT2R1A; AT2R1B; HAT1R; Type 1 angiotensin II receptor; AGTR1_HUMAN; Type-1 angiotensin II receptor; Angiotensin II type-1 receptor; AT1R; Ang II; Angiotensin II receptor type 1; Angiotensin receptor 1; Angiotensin receptor 1B; AT 1B; AT1; AT1R.
Organism Species:	Rabbit
Clonality:	Polyclonal
React Species:	Human,Mouse,Rat,Cow,Rabbit,
Applications:	ELISA=1:500-1000IHC-P=1:400-800IHC-F=1:400-800Flow-Cyt=1ug/TestIF=1:100-500 (Paraffin sections need antigen repair) not yet tested in other applications. optimal dilutions/concentrations should be determined by the end user.
Molecular weight:	39kDa
Cellular localization:	The cell membrane
Form:	Lyophilized or Liquid
Concentration:	1mg/ml
immunogen:	KLH conjugated synthetic peptide derived from human AT1R:201-300/359<Cytoplasmic>
Lsotype:	IgG
Purification:	affinity purified by Protein A
Storage Buffer:	0.01M TBS(pH7.4) with 1% BSA, 0.03% Proclin300 and 50% Glycerol.
Storage:	Store at -20 °C for one year. Avoid repeated freeze/thaw cycles. The lyophilized antibody is stable at room temperature for at least one month and for greater than a year when kept at -20°C. When reconstituted in sterile pH 7.4 0.01M PBS or diluent of antibody the antibody is stable for at least two weeks at 2-4 °C.
PubMed:	PubMed

Angiotensin II is a potent vasopressor hormone and a primary regulator of aldosterone secretion. It is an important effector controlling blood pressure and volume in the cardiovascular system. It acts through at least two types of receptors. This gene encodes the type 1 receptor which is thought to mediate the major cardiovascular effects of angiotensin II. This gene may play a role in the generation of reperfusion arrhythmias following restoration of blood flow to ischemic or infarcted myocardium. It was previously thought that a related gene, denoted as AGTR1B, existed; however, it is now believed that there is only one type 1 receptor gene in humans. At least five transcript variants have been described for this gene. Additional variants have been described but their full-length nature has not been determined. The entire coding sequence is contained in the terminal exon and is present in all transcript variants. [provided by RefSeq].

Function:

Receptor for angiotensin II. Mediates its action by association with G proteins that activate a phosphatidylinositol-calcium second messenger system.

Subunit:

Interacts with MAS1 (Probable). Interacts with ARRB1.

Subcellular Location:

Cell membrane; Multi-pass membrane protein.

Tissue Specificity:

Liver, lung, adrenal and adrenocortical adenomas.

Post-translational modifications:

C-terminal Ser or Thr residues may be phosphorylated.

DISEASE:

Renal tubular dysgenesis (RTD) [MIM:267430]: Autosomal recessive severe disorder of renal tubular development characterized by persistent fetal anuria and perinatal death, probably due to pulmonary hypoplasia from early-onset oligohydramnios (the Potter phenotype). Note=The disease is caused by mutations affecting the gene represented in this entry.

Similarity:

Belongs to the G-protein coupled receptor 1 family.

SWISS:

P30556

Gene ID:

185

Database links:

Product Detail:

[Entrez Gene: 185](#) Human

[Entrez Gene: 11607](#) Mouse

[Entrez Gene: 11608](#) Mouse

[Entrez Gene: 24180](#) Rat

[Entrez Gene: 81638](#) Rat

[Oimim: 106165](#) Human

[SwissProt: P30556](#) Human

[SwissProt: P29754](#) Mouse

[SwissProt: P29755](#) Mouse

[SwissProt: P25095](#) Rat

[SwissProt: P29089](#) Rat

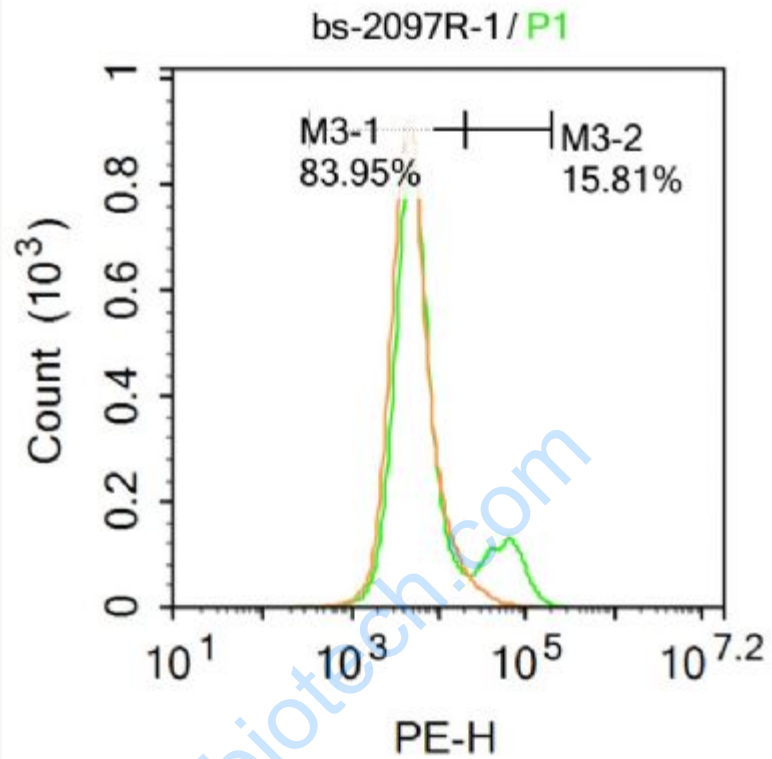
[Unigene: 477887](#) Human

[Unigene: 728754](#) Human

Important Note:

This product as supplied is intended for research use only, not for use in human, therapeutic or diagnostic applications.

AT1-受体: 血管紧张素 II -1型受体抗体, 主要用于Cardiovascular病方面的研究。



Picture:

Blank control: U87MG.

Primary Antibody (green line): Rabbit Anti-Angiotensin II Type 1 Receptor antibody (SL2097R)

Dilution: 1µg /10⁶ cells;

Isotype Control Antibody (orange line): Rabbit IgG .

Secondary Antibody : Goat anti-rabbit IgG-PE

Dilution: 1µg /test.

The cells were incubated in 5%BSA to block non-specific protein-protein interactions for 30 min at room temperature .Cells stained with Primary Antibody for 30 min at room temperature. The secondary antibody used for 40 min at room temperature. Acquisition of 20,000 events was performed.

