



Rabbit Anti-PAFAH2 antibody

SL21003R

Product Name:	PAFAH2
Chinese Name:	血小板活化因子乙酰水解酶2抗体
Alias:	EC 3.1.1.47; HSD PLA2; HSDPLA2; HSD-PLA2; Platelet activating factor acetylhydrolase 2; Platelet activating factor acetylhydrolase 2 cytoplasmic; platelet-activating factor acetylhydrolase 2, 40kDa; SD PLA2; Serine dependent phospholipase A2.
Organism Species:	Rabbit
Clonality:	Polyclonal
React Species:	Human,Mouse,Rat,Pig,Cow,Rabbit,Sheep,
Applications:	WB=1:500-2000ELISA=1:500-1000IHC-P=1:400-800IHC-F=1:400-800ICC=1:100-500IF=1:100-500 (Paraffin sections need antigen repair) not yet tested in other applications. optimal dilutions/concentrations should be determined by the end user.
Molecular weight:	44kDa
Cellular localization:	cytoplasmic
Form:	Lyophilized or Liquid
Concentration:	1mg/ml
immunogen:	KLH conjugated synthetic peptide derived from human PAFAH2:31-130/392
Lsotype:	IgG
Purification:	affinity purified by Protein A
Storage Buffer:	0.01M TBS(pH7.4) with 1% BSA, 0.03% Proclin300 and 50% Glycerol.
Storage:	Store at -20 °C for one year. Avoid repeated freeze/thaw cycles. The lyophilized antibody is stable at room temperature for at least one month and for greater than a year when kept at -20°C. When reconstituted in sterile pH 7.4 0.01M PBS or diluent of antibody the antibody is stable for at least two weeks at 2-4 °C.
PubMed:	PubMed
Product Detail:	This gene encodes platelet-activating factor acetylhydrolase isoform 2, a single-subunit intracellular enzyme that catalyzes the removal of the acetyl group at the SN-2 position of platelet-activating factor (identified as 1-O-alkyl-2-acetyl-sn-glycerol-3-phosphorylcholine). However, this lipase exhibits a broader substrate specificity than

simply platelet activating factor. Two other isoforms of intracellular platelet-activating factor acetylhydrolase exist, and both are multi-subunit enzymes. Additionally, there is a single-subunit serum isoform of this enzyme. [provided by RefSeq, Jul 2008]

Function:

Has a marked selectivity for phospholipids with short acyl chains at the sn-2 position. May share a common physiologic function with the plasma-type enzyme.

Subcellular Location:

Cytoplasmic

Tissue Specificity:

Broadly expressed in different tissues, but high in B- and T-lymphocytes. In brain, expression is restricted to amygdala and frontal cortex.

Similarity:

Belongs to the serine esterase family.

SWISS:

Q99487

Gene ID:

5051

Database links:

[Entrez Gene: 5051](#) Human

[Entrez Gene: 100163](#) Mouse

[Entrez Gene: 313611](#) Rat

[Omim: 602344](#) Human

[SwissProt: Q99487](#) Human

[SwissProt: Q8VDG7](#) Mouse

[SwissProt: P83006](#) Rat

[Unigene: 477083](#) Human

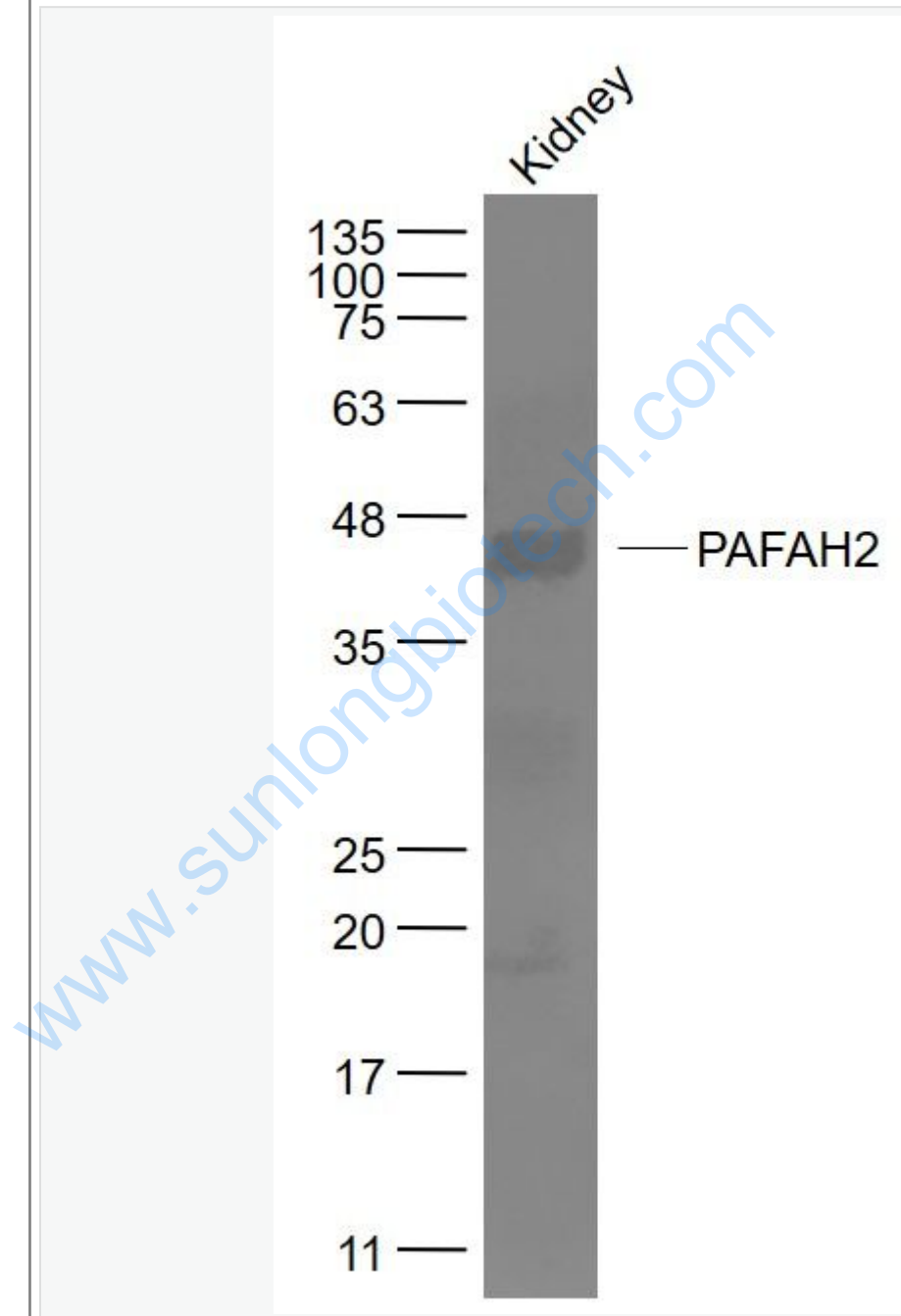
[Unigene: 22116](#) Mouse

[Unigene: 92487](#) Rat

Important Note:

This product as supplied is intended for research use only, not for use in human, therapeutic or diagnostic applications.

Picture:



Sample:

Kidney (Mouse) Lysate at 40 ug

Primary: Anti- PAFAH2 (SL21003R) at 1/1000 dilution

Secondary: IRDye800CW Goat Anti-Rabbit IgG at 1/20000 dilution

Predicted band size: 44 kD

Observed band size: 44 kD

www.sunlongbiotech.com