



## Rabbit Anti-PAMCI/RASF9 antibody

SL21011R

<b>Product Name:</b>	PAMCI/RASF9
<b>Chinese Name:</b>	RAS家族关联结构域蛋白9抗体
<b>Alias:</b>	P CIP1; P-CIP1; PAM COOH-terminal interactor protein 1; PCIP; Peptidylglycine alpha amidating monooxygenase COOH terminal interactor; peptidylglycine alpha-amidating monooxygenase COOH terminal interactor protein 1; Peptidylglycine alpha-amidating monooxygenase COOH-terminal interactor; Ras association (RalGDS/AF 6) domain family (N terminal) member 9; Ras association domain-containing protein 9; RASF9 HUMAN; Rassf9.
<b>Organism Species:</b>	Rabbit
<b>Clonality:</b>	Polyclonal
<b>React Species:</b>	Human,Mouse,Rat,Cow,Rabbit,Sheep,
<b>Applications:</b>	ELISA=1:500-1000IHC-P=1:400-800IHC-F=1:400-800ICC=1:100-500IF=1:100-500 (Paraffin sections need antigen repair) not yet tested in other applications. optimal dilutions/concentrations should be determined by the end user.
<b>Molecular weight:</b>	50kDa
<b>Cellular localization:</b>	cytoplasmic
<b>Form:</b>	Lyophilized or Liquid
<b>Concentration:</b>	1mg/ml
<b>immunogen:</b>	KLH conjugated synthetic peptide derived from human PAMCI/RASF9:1-100/435
<b>Lsotype:</b>	IgG
<b>Purification:</b>	affinity purified by Protein A
<b>Storage Buffer:</b>	0.01M TBS(pH7.4) with 1% BSA, 0.03% Proclin300 and 50% Glycerol.
<b>Storage:</b>	Store at -20 °C for one year. Avoid repeated freeze/thaw cycles. The lyophilized antibody is stable at room temperature for at least one month and for greater than a year when kept at -20°C. When reconstituted in sterile pH 7.4 0.01M PBS or diluent of antibody the antibody is stable for at least two weeks at 2-4 °C.
<b>PubMed:</b>	<a href="#">PubMed</a>
<b>Product Detail:</b>	The protein encoded by this gene localizes to perinuclear endosomes. This protein associates with peptidylglycine alpha-amidating monooxygenase, and may be involved

with the trafficking of this enzyme through secretory or endosomal pathways. [provided by RefSeq, Jul 2008]

**Function:**

May play a role in regulating vesicular trafficking in cells.

**Subcellular Location:**

Endosome. Accumulates on perinuclear endosomes.

**Similarity:**

Contains 1 Ras-associating domain.

**SWISS:**

O75901

**Gene ID:**

9182

**Database links:**

[Entrez Gene: 9182](#) Human

[Entrez Gene: 237504](#) Mouse

[Entrez Gene: 65053](#) Rat

[Omim: 610383](#) Human

[SwissProt: O75901](#) Human

[SwissProt: Q8K342](#) Mouse

[SwissProt: O88869](#) Rat

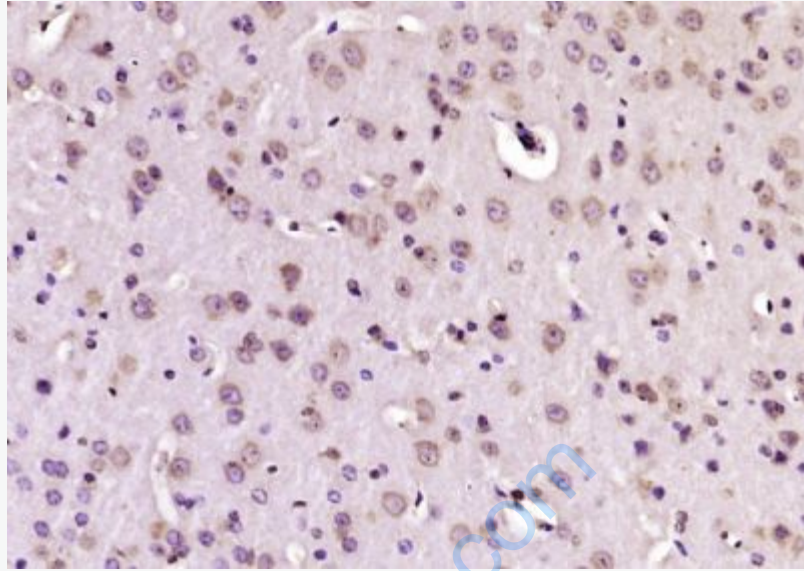
[Unigene: 527881](#) Human

[Unigene: 282672](#) Mouse

[Unigene: 30013](#) Rat

**Important Note:**

This product as supplied is intended for research use only, not for use in human, therapeutic or diagnostic applications.



**Picture:**

Paraformaldehyde-fixed, paraffin embedded (mouse brain); Antigen retrieval by boiling in sodium citrate buffer (pH6.0) for 15min; Block endogenous peroxidase by 3% hydrogen peroxide for 20 minutes; Blocking buffer (normal goat serum) at 37°C for 30min; Antibody incubation with (PAMCI/RASF9) Polyclonal Antibody, Unconjugated (SL21011R) at 1:200 overnight at 4°C, followed by operating according to SP Kit(Rabbit) (sp-0023) instructions and DAB staining.