



Rabbit Anti-Pannexin 1 antibody

SL21015R

Product Name:	Pannexin 1
Chinese Name:	间隙连接蛋白PANX1抗体
Alias:	innexin; MRS1; Pannexin 1; Pannexin-1; Panx1; PANX1_HUMAN; PX1; UNQ2529.
Organism Species:	Rabbit
Clonality:	Polyclonal
React Species:	Human,Mouse,Rat,Cow,Horse,Rabbit,Sheep,
Applications:	WB=1:500-2000ELISA=1:500-1000IHC-P=1:400-800IHC-F=1:400-800ICC=1:100-500IF=1:100-500 (Paraffin sections need antigen repair) not yet tested in other applications. optimal dilutions/concentrations should be determined by the end user.
Molecular weight:	48kDa
Cellular localization:	The cell membrane
Form:	Lyophilized or Liquid
Concentration:	1mg/ml
immunogen:	KLH conjugated synthetic peptide derived from human Pannexin 1:61-106/426<Extracellular>
Lsotype:	IgG
Purification:	affinity purified by Protein A
Storage Buffer:	0.01M TBS(pH7.4) with 1% BSA, 0.03% Proclin300 and 50% Glycerol.
Storage:	Store at -20 °C for one year. Avoid repeated freeze/thaw cycles. The lyophilized antibody is stable at room temperature for at least one month and for greater than a year when kept at -20°C. When reconstituted in sterile pH 7.4 0.01M PBS or diluent of antibody the antibody is stable for at least two weeks at 2-4 °C.
PubMed:	PubMed
Product Detail:	The protein encoded by this gene belongs to the innexin family. Innexin family members are the structural components of gap junctions. This protein and pannexin 2 are abundantly expressed in central nerve system (CNS) and are coexpressed in various neuronal populations. Studies in Xenopus oocytes suggest that this protein alone and in combination with pannexin 2 may form cell type-specific gap junctions with distinct properties. [provided by RefSeq, Jul 2008]

Function:

Structural component of the gap junctions and the hemichannels. May play a role as a Ca(2+)-leak channel to regulate ER Ca(2+) homeostasis.

Subunit:

Homohexamer. Forms homomeric or PANX1/PANX2-heteromeric intercellular channels on coexpression in paired *Xenopus* oocytes (By similarity).

Subcellular Location:

Cell membrane. Cell junction > gap junction. Endoplasmic reticulum membrane.

Similarity:

Belongs to the pannexin family.

SWISS:

Q96RD7

Gene ID:

24145

Database links:

[Entrez Gene: 24145](#) Human

[Entrez Gene: 55991](#) Mouse

[Entrez Gene: 100171730](#) Orangutan

[Entrez Gene: 315435](#) Rat

[Omim: 608420](#) Human

[SwissProt: Q96RD7](#) Human

[SwissProt: Q9JIP4](#) Mouse

[SwissProt: Q5REE3](#) Orangutan

[SwissProt: P60570](#) Rat

[Unigene: 591976](#) Human

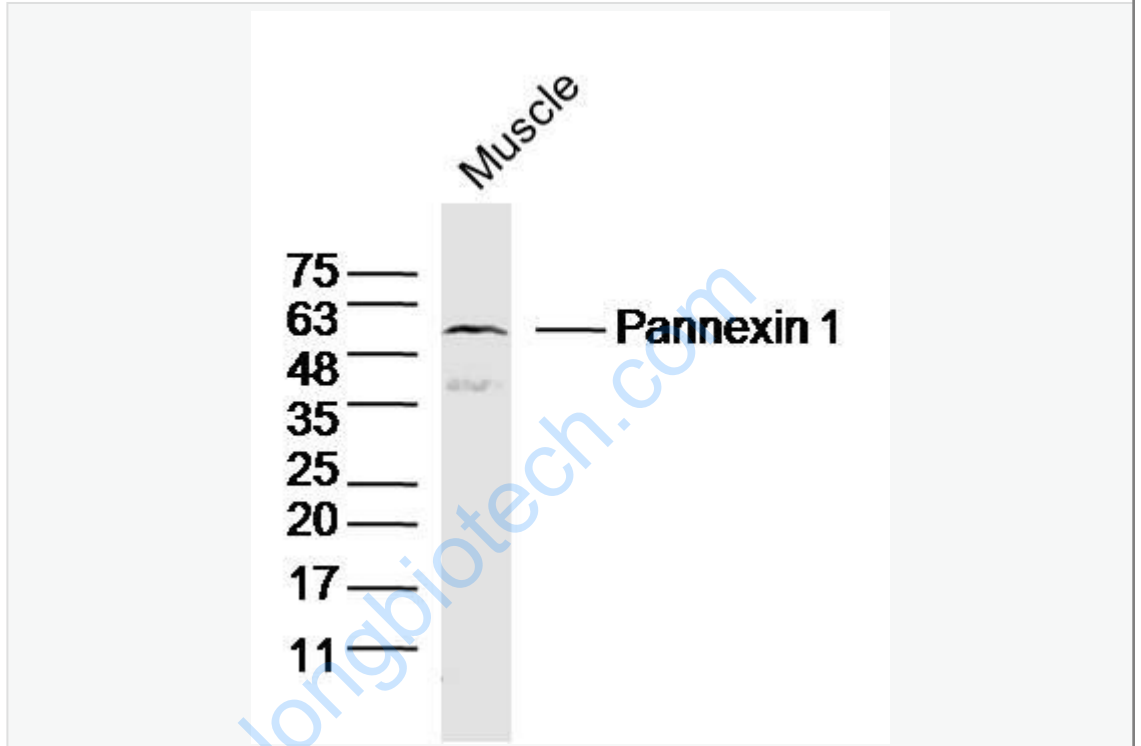
[Unigene: 142253](#) Mouse

[Unigene: 204521](#) Rat

Important Note:

This product as supplied is intended for research use only, not for use in human, therapeutic or diagnostic applications.

Picture:



Sample: Muscle (Mouse) Lysate at 40 ug

Primary: Anti-Pannexin 1 (SL21015R) at 1/300 dilution

Secondary: IRDye800CW Goat Anti-Rabbit IgG at 1/20000 dilution

Predicted band size: 48kD

Observed band size: 53kD