



Rabbit Anti-TRPC6 antibody

SL21380R

Product Name:	TRPC6
Chinese Name:	瞬时受体电位离子Channel protein6抗体
Alias:	MTRP6; Short transient receptor potential channel 6; si:rp71-1p14.9; Transient Receptor Potential Cation Channel Subfamily C Member 6; Transient receptor protein 6; TRP 6; TRP-6; TRP6; TRPC 6; TrpC6; TRPC6_HUMAN; TRRP6; bZ1P14.9; FLJ11098; FLJ14863; FSGS2.
Organism Species:	Rabbit
Clonality:	Polyclonal
React Species:	Human,Mouse,Rat,Rabbit,
Applications:	WB=1:500-2000 not yet tested in other applications. optimal dilutions/concentrations should be determined by the end user.
Molecular weight:	106kDa
Cellular localization:	The cell membrane
Form:	Lyophilized or Liquid
Concentration:	1mg/ml
immunogen:	KLH conjugated synthetic peptide derived from human TRPC6:831-931/931<Cytoplasmic>
Lsotype:	IgG
Purification:	affinity purified by Protein A
Storage Buffer:	0.01M TBS(pH7.4) with 1% BSA, 0.03% Proclin300 and 50% Glycerol.
Storage:	Store at -20 °C for one year. Avoid repeated freeze/thaw cycles. The lyophilized antibody is stable at room temperature for at least one month and for greater than a year when kept at -20°C. When reconstituted in sterile pH 7.4 0.01M PBS or diluent of antibody the antibody is stable for at least two weeks at 2-4 °C.
PubMed:	PubMed
Product Detail:	The protein encoded by this gene forms a receptor-activated calcium channel in the cell membrane. The channel is activated by diacylglycerol and is thought to be under the control of a phosphatidylinositol second messenger system. Activation of this channel occurs independently of protein kinase C and is not triggered by low levels of

intracellular calcium. Defects in this gene are a cause of focal segmental glomerulosclerosis 2 (FSGS2). [provided by RefSeq].

Subunit:

Interacts with MX1 and RNF24.

Subcellular Location:

Membrane; Multi-pass membrane protein.

Tissue Specificity:

Expressed primarily in placenta, lung, spleen, ovary and small intestine. Expressed in podocytes and is a component of the glomerular slit diaphragm.

Similarity:

Belongs to the transient receptor (TC 1.A.4) family. STpC subfamily. TRPC6 sub-subfamily.

Contains 4 ANK repeats.

SWISS:

Q9Y210

Gene ID:

7225

Database links:

[Entrez Gene: 7225](#)Human

[Entrez Gene: 22068](#)Mouse

[Entrez Gene: 89823](#)Rat

[Omir: 603652](#)Human

[SwissProt: Q9Y210](#)Human

[SwissProt: Q61143](#)Mouse

[Unigene: 159003](#)Human

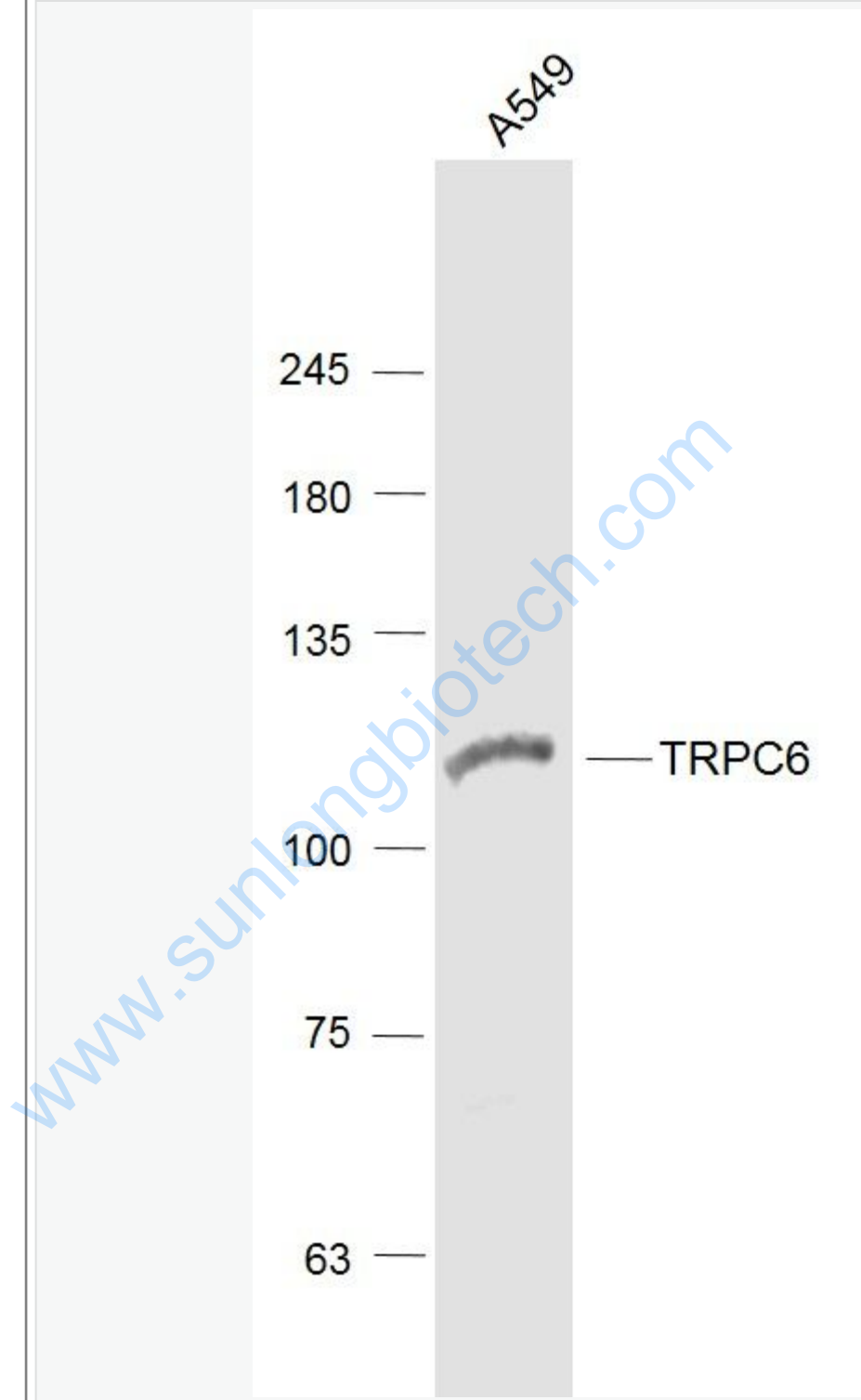
[Unigene: 325086](#)Mouse

[Unigene: 105986](#)Rat

Important Note:

This product as supplied is intended for research use only, not for use in human, therapeutic or diagnostic applications.

Picture:



Sample:

A549(Human) Cell Lysate at 30 ug

Primary: Anti-TRPC6 (SL21380R) at 1/1000 dilution

Secondary: IRDye800CW Goat Anti-Rabbit IgG at 1/20000 dilution

Predicted band size: 106 kD

Observed band size: 106 kD

www.sunlongbiotech.com