



Rabbit Anti-KIF3A antibody

SL21397R

Product Name:	KIF3A
Chinese Name:	驱动蛋白家族蛋白3抗体
Alias:	KIF 3; KIF-3; KIF 3A; KIF-3A; KIF3; Kif3a; KIF3A_HUMAN; Kifl; kinesin family member 3A; Kinesin family protein 3; Kinesin family protein 3A; Kinesin like protein KIF 3A; Kinesin like protein KIF3A; Kinesin-like protein KIF3A; Kns3; Microtubule plus end directed kinesin motor 3A; Microtubule plus end-directed kinesin motor 3A.
Organism Species:	Rabbit
Clonality:	Polyclonal
React Species:	Human,Mouse,Rat,Dog,Pig,Cow,Horse,Rabbit,
Applications:	IHC-P=1:400-800IHC-F=1:400-800ICC=1:100-500IF=1:100-500 (Paraffin sections need antigen repair) not yet tested in other applications. optimal dilutions/concentrations should be determined by the end user.
Molecular weight:	80kDa
Cellular localization:	cytoplasmic
Form:	Lyophilized or Liquid
Concentration:	1mg/ml
immunogen:	KLH conjugated synthetic peptide derived from human KIF3A:
Lsotype:	IgG
Purification:	affinity purified by Protein A
Storage Buffer:	0.01M TBS(pH7.4) with 1% BSA, 0.03% Proclin300 and 50% Glycerol.
Storage:	Store at -20 °C for one year. Avoid repeated freeze/thaw cycles. The lyophilized antibody is stable at room temperature for at least one month and for greater than a year when kept at -20°C. When reconstituted in sterile pH 7.4 0.01M PBS or diluent of antibody the antibody is stable for at least two weeks at 2-4 °C.
PubMed:	PubMed
Product Detail:	The kinesins constitute a large family of microtubule-dependent motor proteins which are responsible for the distribution of numerous organelles, vesicles and macromolecular complexes throughout the cell. Individual kinesin members play crucial roles in cell division, intracellular transport and membrane trafficking events including endocytosis

and transcytosis. Members of the heterotrimeric kinesin II family of microtubule associated motors generally contain two different motor subunits from the KIF3 family, which includes KIF3A, B and C. KIF3 isoforms mediate anterograde transport of membrane bound organelles in neurons and melanosomes, transport between the endoplasmic reticulum and the Golgi, and transport of protein complexes within cilia and flagella required for their morphogenesis. KIF3A may influence neurogenesis at the level of embryonic cellular events, where the asymmetry of the genetic control circuit controlling left-right (L-R) axis determination is defined. Loss of KIF3A function in mice photoreceptors causes apoptotic cell death, suggesting that kinesin II mediated transport is required for proper cell fate.

Function:

Microtubule-based anterograde translocator for membranous organelles. Plus end-directed microtubule sliding activity in vitro.

Subunit:

Belongs to the kinesin-like protein family. Kinesin II subfamily. Contains 1 kinesin-motor domain.

Subcellular Location:

Cytoplasm, cytoskeleton (Probable). Cell projection, cilium (By similarity).

Similarity:

Belongs to the kinesin-like protein family. Kinesin II subfamily. Contains 1 kinesin-motor domain.

SWISS:

Q9Y496

Gene ID:

11127

Database links:

[Entrez Gene: 11127](#) Human

[Entrez Gene: 16568](#) Mouse

[Entrez Gene: 84392](#) Rat

[Omim: 604683](#) Human

[SwissProt: Q9Y496](#) Human

[SwissProt: P28741](#) Mouse

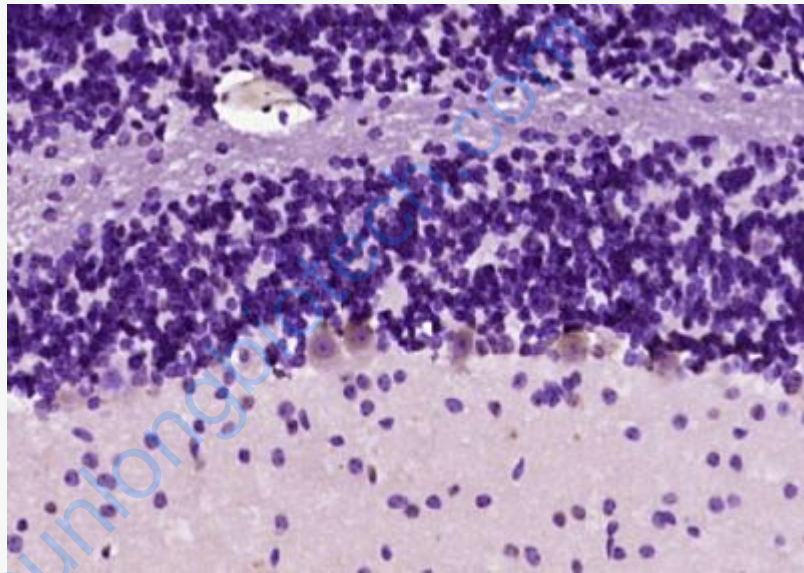
[Unigene: 43670](#) Human

[Unigene: 88694](#) Mouse

[Unigene: 47400](#) Rat

Important Note:

This product as supplied is intended for research use only, not for use in human, therapeutic or diagnostic applications.



Picture:

Paraformaldehyde-fixed, paraffin embedded (mouse cerebellum tissue); Antigen retrieval by boiling in sodium citrate buffer (pH6.0) for 15min; Block endogenous peroxidase by 3% hydrogen peroxide for 20 minutes; Blocking buffer (normal goat serum) at 37°C for 30min; Antibody incubation with (KIF3A) Polyclonal Antibody, Unconjugated (SL21397R) at 1:200 overnight at 4°C, followed by operating according to SP Kit(Rabbit) (sp-0023) instructions and DAB staining.