



Rabbit Anti-IL17 antibody

SL2140R

Product Name:	IL17
Chinese Name:	白介素-17抗体
Alias:	IL-17; IL 17; IL17; Other Aliases: Interleukin-17; CTLA 8 ; CTLA8; Cytotoxic T lymphocyte associated antigen 8; Cytotoxic T lymphocyte associated protein 8 ; Cytotoxic T lymphocyte associated serine esterase 8; IL 17A; IL17A; Interleukin 17; Interleukin 17A; Interleukin17; Interleukin17A; IL17 HUMAN.
文献引用 PubMed :	<p>Specific References(4) SL2140R has been referenced in 4 publications.</p> <p>[IF=3.33]Niu, Yinghua, et al. "The balance between intrahepatic IL-17+ T cells and Foxp3+ regulatory T cells plays an important role in HBV-related end-stage liver disease." BMC immunology 12.1 (2011): 47.IHC-P;Human. PubMed:21851644</p> <p>[IF=1.96]Kou, Wei, et al. "Transforming growth factor-β1 promotes Treg commitment in nasal polyposis after intranasal steroid treatment."Inflammation Research (2013): 1-7.2ELISA;Human. PubMed:23178794</p> <p>[IF=1.65]Ghazi, H. F., N. A. Mohammed, and R. J. Hussein. "Tissue IL-17A expression associated with inflammatory lesions and ATG16L1 T300A allele in Crohn's disease." International Journal of Advanced Research 3.1 (2015): 33-40.IHC-P;Human. PubMed:not posted yet</p> <p>[IF=1.48]Tang, Wei?Jing, et al. "Role of T helper 17 cytokines in the tumour immune inflammation response of patients with laryngeal squamous cell carcinoma." Oncology Letters.IHC-P;Human.</p>

[PubMed:28693282](#)

Organism Species:	Rabbit
Clonality:	Polyclonal
React Species:	Human,
Applications:	WB=1:500-2000ELISA=1:500-1000IHC-P=1:400-800IHC-F=1:400-800IF=1:100-500 (Paraffin sections need antigen repair) not yet tested in other applications. optimal dilutions/concentrations should be determined by the end user.
Molecular weight:	15kDa
Cellular localization:	Secretory protein
Form:	Lyophilized or Liquid
Concentration:	1mg/ml
immunogen:	KLH conjugated synthetic peptide derived from human IL-17:35-130/155
Lsotype:	IgG
Purification:	affinity purified by Protein A
Storage Buffer:	0.01M TBS(pH7.4) with 1% BSA, 0.03% Proclin300 and 50% Glycerol.
Storage:	Store at -20 °C for one year. Avoid repeated freeze/thaw cycles. The lyophilized antibody is stable at room temperature for at least one month and for greater than a year when kept at -20°C. When reconstituted in sterile pH 7.4 0.01M PBS or diluent of antibody the antibody is stable for at least two weeks at 2-4 °C.
PubMed:	PubMed
Product Detail:	<p>IL17, also known as CTLA8, is a T cell derived hematopoietic cytokine. It was originally cloned from a T cell hybridoma produced by fusion of a mouse cytotoxic T cell clone and a rat T lymphoma. IL17 exhibits multiple biological activities on a variety of cells including: the induction of IL6, IL8 and GCSF production in fibroblasts; the enhancement of surface expression of ICAM 1 in fibroblasts; activation of NF kappaB and costimulation of T cell proliferation. IL17 is an approximately 16 kDa polypeptide of 136 amino acids. The precursor form of IL17 consists of 155 amino acids. To generate the mature IL17 (136 amino acids), the precursor cleaves a 19 amino acid signal peptide. Human IL17 shows approximately 62.5% amino acid homology to mouse IL17 and 58% amino acid homology to rat IL17.</p> <p>Function: Induces stromal cells to produce proinflammatory and hematopoietic cytokines. Enhances the surface expression of ICAM1/intracellular adhesion molecule 1 in fibroblasts.</p> <p>Subunit: Homodimer.</p> <p>Subcellular Location: Secreted.</p> <p>Tissue Specificity: Restricted to a subset of activated T-cells.</p>

Post-translational modifications:

Found both in glycosylated and nonglycosylated forms.

Similarity:

Belongs to the IL-17 family.

SWISS:

Q16552

Gene ID:

3605

Database links:

[Entrez Gene: 3605](#)Human

[Entrez Gene: 16171](#)Mouse

[Entrez Gene: 301289](#)Rat

[Omim: 603149](#)Human

[SwissProt: Q16552](#)Human

[SwissProt: Q62386](#)Mouse

[SwissProt: Q61453](#)Rat

[Unigene: 41724](#)Human

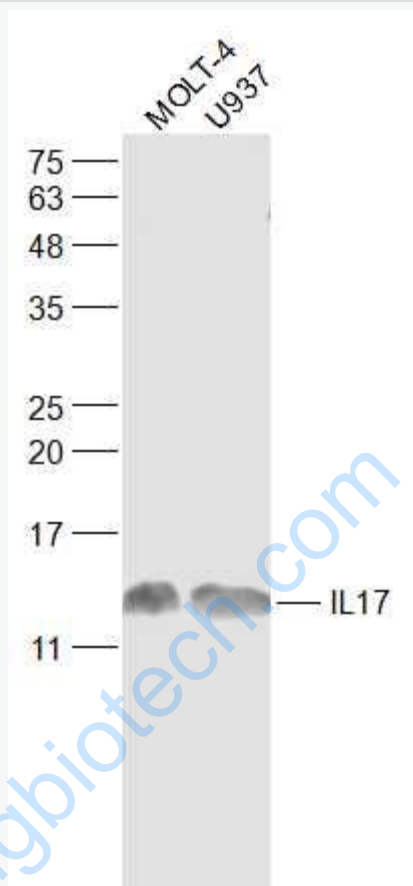
Important Note:

This product as supplied is intended for research use only, not for use in human, therapeutic or diagnostic applications.

白细胞介素17(IL-17A)是一种来源于活化Tlymphocyte的cell factor,具有较广泛的生物学活性,它能够通过诱导基质细胞产生前炎性cell factor和造血cell factor参与机体免疫调节及部分炎症反应,因此白细胞介素IL-17A可能是某些疾病发生发展的重要因素之一。

人IL-17A与人IL-17F的同源性为40%,人与小鼠的IL-17F同源性近80%。Interleukin-17 原称CTLA-8,是T细胞表达的多肽,参与造血干系统的调节,已经显示IL-17促进纤维母细胞产生IL-6, IL-8和G-CSF。

Picture:



Sample:

MOLT-4(Human) Cell Lysate at 30 ug

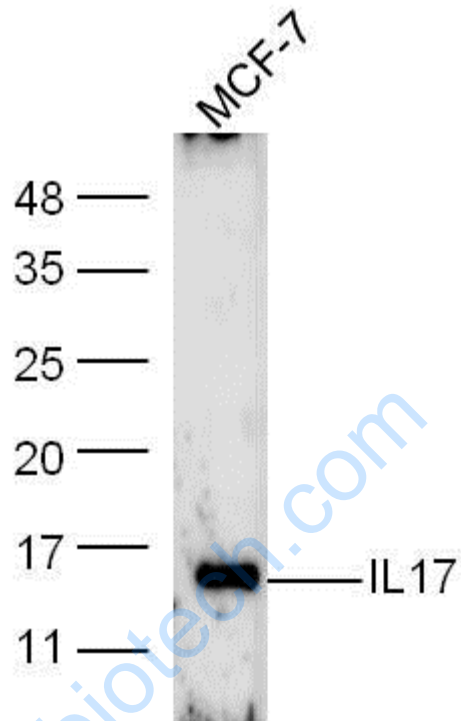
U937(Human) Cell Lysate at 30 ug

Primary: Anti-IL17 (SL2140R) at 1/1000 dilution

Secondary: IRDye800CW Goat Anti-Rabbit IgG at 1/20000 dilution

Predicted band size: 15 kD

Observed band size: 14 kD



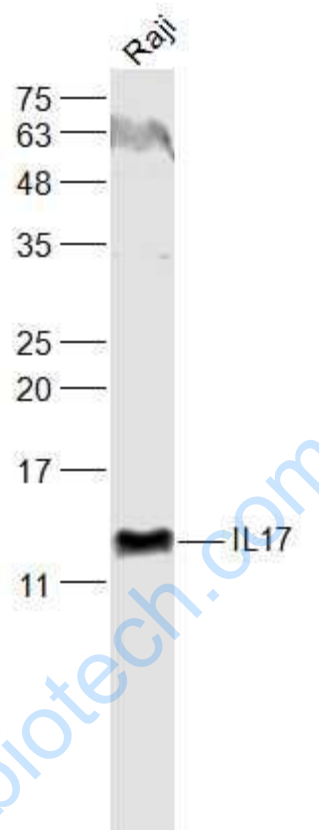
Sample: MCF-7 Cell Lysate at 30 ug

Primary: Anti-IL-17 (SL2140R) at 1/300 dilution

Secondary: IRDye800CW Goat Anti-Rabbit IgG at 1/20000 dilution

Predicted band size: 15 kD

Observed band size: 15 kD



Sample:

Raji(Human) Cell Lysate at 30 ug

Primary: Anti-IL17 (SL2140R) at 1/1000 dilution

Secondary: IRDye800CW Goat Anti-Rabbit IgG at 1/20000 dilution

Predicted band size: 15 kD

Observed band size: 14 kD