



Rabbit Anti-EGFL6 antibody

SL21427R

Product Name:	EGFL6
Chinese Name:	表皮生长因子样蛋白6抗体
Alias:	EGF like domain multiple 6; EGF repeat containing protein 6; EGF-like protein 6; EGF-like-domain multiple 6; egfl6; EGFL6_HUMAN; epidermal growth factor like protein 6; Epidermal growth factor-like protein 6; MAEG; MAM and EGF domain containing; MAM and EGF domains containing gene protein; MAM and EGF domains-containing gene protein; W80.
Organism Species:	Rabbit
Clonality:	Polyclonal
React Species:	Human,Mouse,Rat,Dog,Cow,Horse,
Applications:	WB=1:500-2000ELISA=1:500-1000 not yet tested in other applications. optimal dilutions/concentrations should be determined by the end user.
Molecular weight:	59kDa
Cellular localization:	The cell membraneExtracellular matrixSecretory protein
Form:	Lyophilized or Liquid
Concentration:	1mg/ml
immunogen:	KLH conjugated synthetic peptide derived from human EGFL6:481-581/553
Lsotype:	IgG
Purification:	affinity purified by Protein A
Storage Buffer:	0.01M TBS(pH7.4) with 1% BSA, 0.03% Proclin300 and 50% Glycerol.
Storage:	Store at -20 °C for one year. Avoid repeated freeze/thaw cycles. The lyophilized antibody is stable at room temperature for at least one month and for greater than a year when kept at -20°C. When reconstituted in sterile pH 7.4 0.01M PBS or diluent of antibody the antibody is stable for at least two weeks at 2-4 °C.
PubMed:	PubMed
Product Detail:	This gene encodes a member of the epidermal growth factor(EGF) repeat superfamily. Members of this superfamily are characterized by the presence of EGF-like repeats and are often involved in the regulation of cell cycle, proliferation, and developmental processes. The gene product contains a signal peptide, suggesting that it is secreted; an

EGF repeat region consisting of 4 complete EGF-like repeats and 1 partial EGF-like repeat, 3 of which have a calcium-binding consensus sequence; an arg-gly-aspartic integrin association motif; and a MAM domain, which is believed to have an adhesive function. This gene is expressed early during development, and its expression has been detected in lung and meningioma tumors. [provided by RefSeq, Jul 2008].

Function:

May bind integrin alpha-8/beta-1 and play a role in hair follicle morphogenesis. Promotes matrix assembly.

Subcellular Location:

Secreted, extracellular space, extracellular matrix, basement membrane (By similarity).

Similarity:

Belongs to the nephronectin family.
Contains 5 EGF-like domains.
Contains 1 MAM domain.

SWISS:

Q8IUX8

Gene ID:

25975

Database links:

[Entrez Gene: 25975](#)Human

[Entrez Gene: 54156](#)Mouse

[Entrez Gene: 317470](#)Rat

[Omir: 300239](#)Human

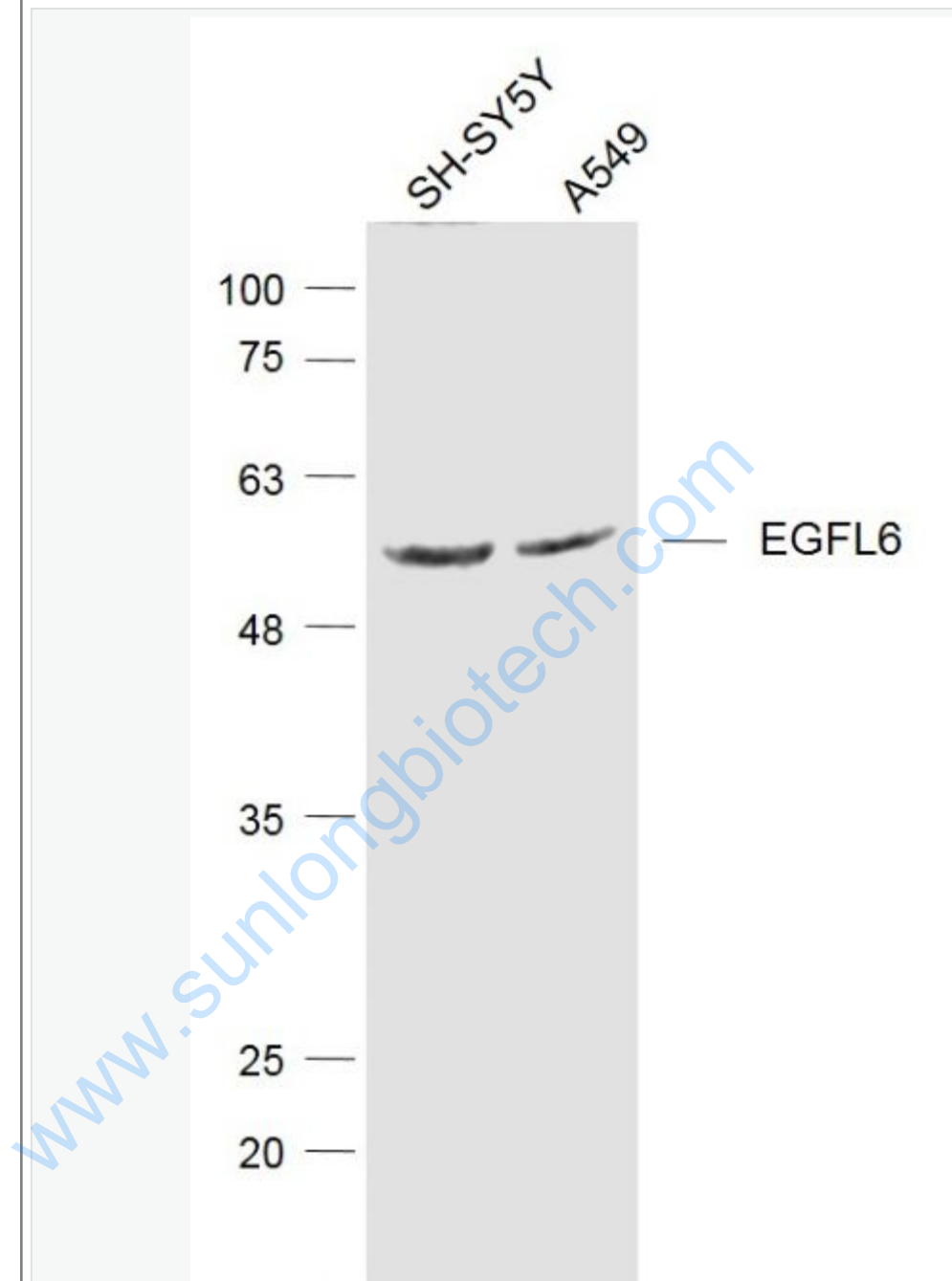
[SwissProt: Q8IUX8](#)Human

[SwissProt: Q9JJZ5](#)Mouse

Important Note:

This product as supplied is intended for research use only, not for use in human, therapeutic or diagnostic applications.

Picture:



Sample:

A549(Human) Cell Lysate at 30 ug

SH-SY5Y (Human) Cell Lysate at 30 ug

Primary: Anti- EGFL6 (SL21427R) at 1/1000 dilution

Secondary: IRDye800CW Goat Anti-Rabbit IgG at 1/20000 dilution

Predicted band size: 59 kD

Observed band size: 59 kD

www.sunlongbiotech.com