



Rabbit Anti-CD47 antibody

SL21460R

Product Name:	CD47
Chinese Name:	整合素相关蛋白CD47
Alias:	Antigenic surface determinant protein OA3; CD 47; CD47; CD47 antigen; CD47 glycoprotein; CD47 molecule; CD47_HUMAN; IAP; Integrin Associated Protein; Integrin associated signal transducer; Integrin-associated protein; Leukocyte surface antigen CD47; MER 6; MER6; OA 3; OA3; Protein MER6; Rh related antigen.
Organism Species:	Rabbit
Clonality:	Polyclonal
React Species:	Human,
Applications:	WB=1:500-2000ELISA=1:500-1000IHC-P=1:400-800IHC-F=1:400-800ICC=1:100-500IF=1:100-500 (Paraffin sections need antigen repair) not yet tested in other applications. optimal dilutions/concentrations should be determined by the end user.
Molecular weight:	33kDa
Cellular localization:	The cell membrane
Form:	Lyophilized or Liquid
Concentration:	1mg/ml
immunogen:	KLH conjugated synthetic peptide derived from human CD47:19-119/323<Extracellular>
Lsotype:	IgG
Purification:	affinity purified by Protein A
Storage Buffer:	0.01M TBS(pH7.4) with 1% BSA, 0.03% Proclin300 and 50% Glycerol.
Storage:	Store at -20 °C for one year. Avoid repeated freeze/thaw cycles. The lyophilized antibody is stable at room temperature for at least one month and for greater than a year when kept at -20°C. When reconstituted in sterile pH 7.4 0.01M PBS or diluent of antibody the antibody is stable for at least two weeks at 2-4 °C.
PubMed:	PubMed
Product Detail:	This gene encodes a membrane protein, which is involved in the increase in intracellular calcium concentration that occurs upon cell adhesion to extracellular matrix. The encoded protein is also a receptor for the C-terminal cell binding domain of

thrombospondin, and it may play a role in membrane transport and signal transduction. This gene has broad tissue distribution, and is reduced in expression on Rh erythrocytes. Alternatively spliced transcript variants have been found for this gene. [provided by RefSeq].

Function:

Has a role in both cell adhesion by acting as an adhesion receptor for THBS1 on platelets, and in the modulation of integrins. Plays an important role in memory formation and synaptic plasticity in the hippocampus (By similarity). Receptor for SIRPA, binding to which prevents maturation of immature dendritic cells and inhibits cytokine production by mature dendritic cells. Interaction with SIRPG mediates cell-cell adhesion, enhances superantigen-dependent T-cell-mediated proliferation and costimulates T-cell activation. May play a role in membrane transport and/or integrin dependent signal transduction. May prevent premature elimination of red blood cells. May be involved in membrane permeability changes induced following virus infection.

Subunit:

Interacts with THBS1 and fibrinogen (By similarity). Monomer. Interacts with SIRPA, SIRPG, UBQLN1 and UBQLN2.

Subcellular Location:

Cell membrane; Multi-pass membrane protein.

Tissue Specificity:

Very broadly distributed on normal adult tissues, as well as ovarian tumors, being especially abundant in some epithelia and the brain.

Similarity:

Contains 1 Ig-like V-type (immunoglobulin-like) domain.

SWISS:

Q08722

Gene ID:

961

Database links:

[Entrez Gene: 961](#)Human

[Entrez Gene: 16423](#)Mouse

[Entrez Gene: 29364](#)Rat

[Omim: 601028](#)Human

[SwissProt: Q08722](#)Human

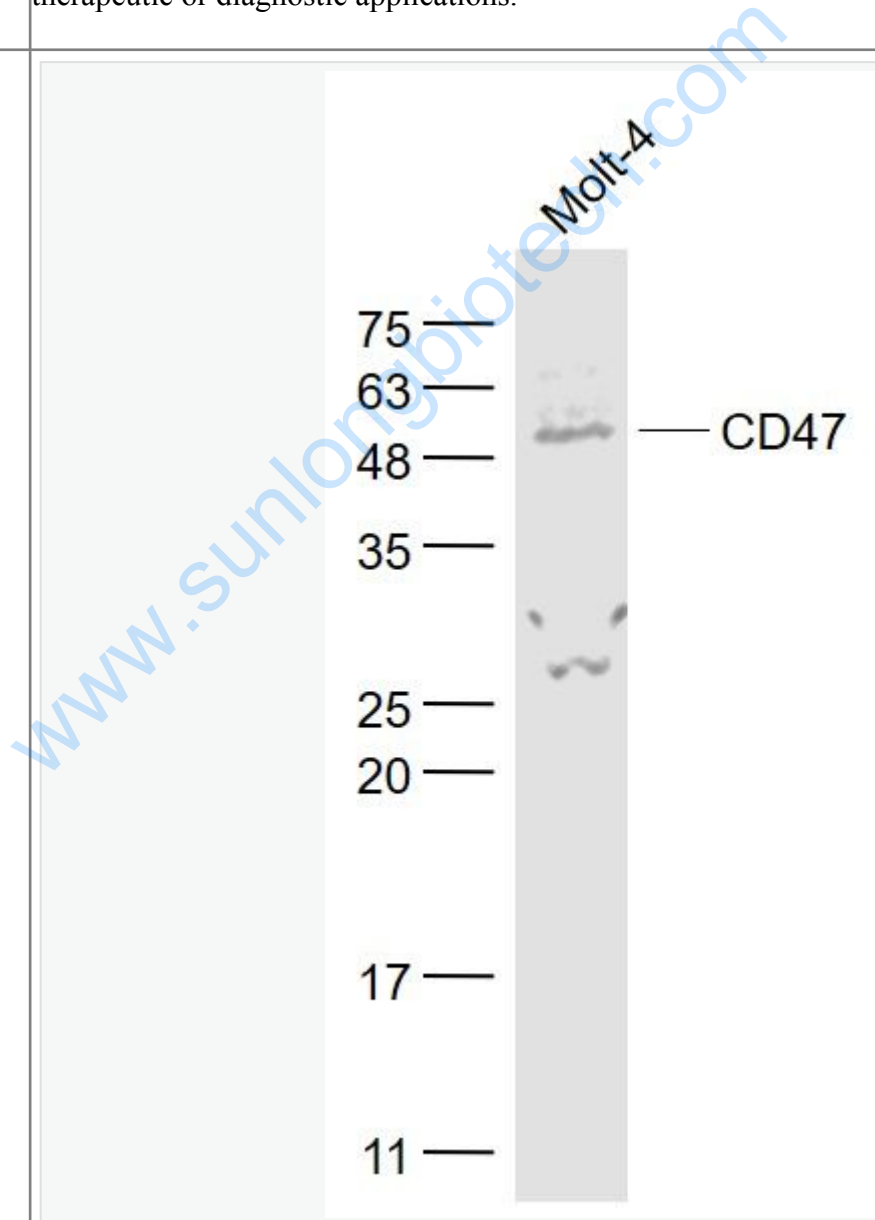
[SwissProt: Q61735](#)Mouse

[SwissProt: P97829](#)Rat
[Unigene: 446414](#)Human
[Unigene: 31752](#)Mouse
[Unigene: 390865](#)Mouse
[Unigene: 7409](#)Rat

Important Note:

This product as supplied is intended for research use only, not for use in human, therapeutic or diagnostic applications.

Picture:



Sample:

MOLT-4(Human) Cell Lysate at 30 ug

Primary: Anti- CD47 (SL21460R) at 1/1000 dilution

Secondary: IRDye800CW Goat Anti-Rabbit IgG at 1/20000 dilution

Predicted band size: 33 kD

Observed band size: 50 kD

www.sunlongbiotech.com