



Rabbit Anti-CALCRL antibody

SL21475R

Product Name:	CALCRL
Chinese Name:	降钙素基因相关肽1型受体抗体
Alias:	CGRPR; CRLR; calcitonin receptor like precursor; Calcitonin gene related peptide type 1 receptor; Calcitonin receptor like; CGRP type 1 receptor; Calcitonin gene related peptide type 1 receptor; Calcitonin receptor like; Calcitonin Receptor Like Receptor; CGRP type 1 receptor; CALRL_HUMAN.
Organism Species:	Rabbit
Clonality:	Polyclonal
React Species:	Human,Mouse,Rat,Pig,Cow,Rabbit,Sheep,
Applications:	WB=1:500-2000ELISA=1:500-1000IHC-P=1:400-800IHC-F=1:400-800ICC=1:100-500IF=1:100-500 (Paraffin sections need antigen repair) not yet tested in other applications. optimal dilutions/concentrations should be determined by the end user.
Molecular weight:	50kDa
Cellular localization:	The cell membrane
Form:	Lyophilized or Liquid
Concentration:	1mg/ml
immunogen:	KLH conjugated synthetic peptide derived from human CALCRL:351-450/461<Cytoplasmic>
Lsotype:	IgG
Purification:	affinity purified by Protein A
Storage Buffer:	0.01M TBS(pH7.4) with 1% BSA, 0.03% Proclin300 and 50% Glycerol.
Storage:	Store at -20 °C for one year. Avoid repeated freeze/thaw cycles. The lyophilized antibody is stable at room temperature for at least one month and for greater than a year when kept at -20°C. When reconstituted in sterile pH 7.4 0.01M PBS or diluent of antibody the antibody is stable for at least two weeks at 2-4 °C.
PubMed:	PubMed
Product Detail:	CRLR is a receptor for calcitonin gene related peptide type 1. The activity of CRLR is mediated by G proteins which activate adenylyl cyclase. CRLR expression has been reported in brain, lung, blood vessel, liver, and intestinal tract. ESTs have been isolated

from B Cell/lung/testis, bone marrow, embryo, lung, and synovium libraries.

Function:

Receptor for calcitonin-gene-related peptide (CGRP) together with RAMP1 and receptor for adrenomedullin together with RAMP3 (By similarity). Receptor for adrenomedullin together with RAMP2. The activity of this receptor is mediated by G proteins which activate adenylyl cyclase.

Subunit:

Heterodimer of CALCRL and RAMP1, RAMP2 or RAMP3.

Subcellular Location:

Cell membrane; Multi-pass membrane protein.

Tissue Specificity:

Predominantly expressed in the lung and heart.

Similarity:

Belongs to the G-protein coupled receptor 2 family.

SWISS:

Q16602

Gene ID:

10203

Database links:

[Entrez Gene: 10203](#)Human

[Entrez Gene: 54598](#)Mouse

[Entrez Gene: 397172](#)Pig

[Entrez Gene: 25029](#)Rat

[Entrez Gene: 527140](#)Cow

[Omim: 114190](#)Human

[SwissProt: Q16602](#)Human

[SwissProt: Q9R1W5](#)Mouse

[SwissProt: Q8WN93](#)Pig

[SwissProt: Q63118](#)Rat

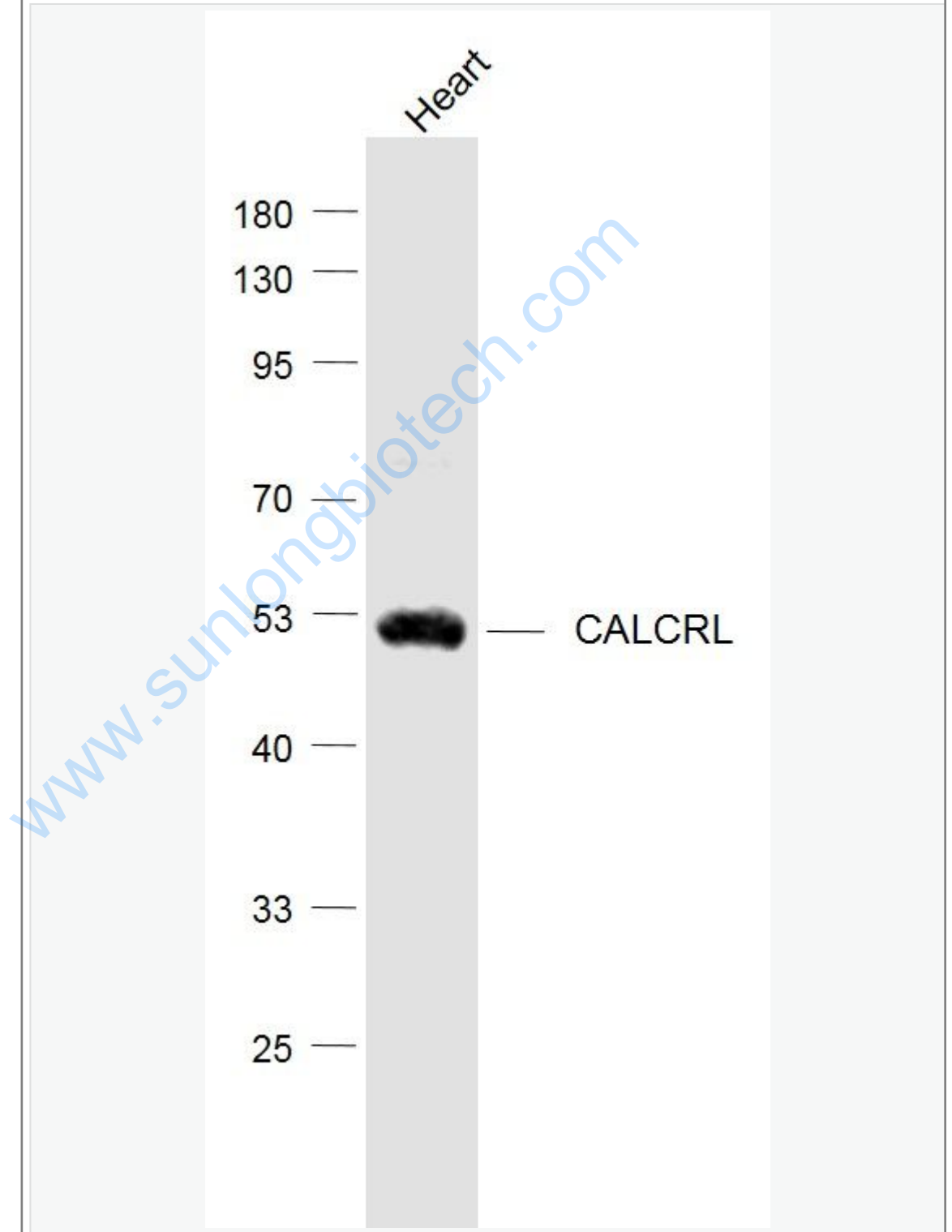
[Unigene: 470882](#)Human

[Unigene: 11202](#)Rat

Important Note:

This product as supplied is intended for research use only, not for use in human, therapeutic or diagnostic applications.

Picture:



Sample:

Heart (Mouse) Lysate at 40 ug

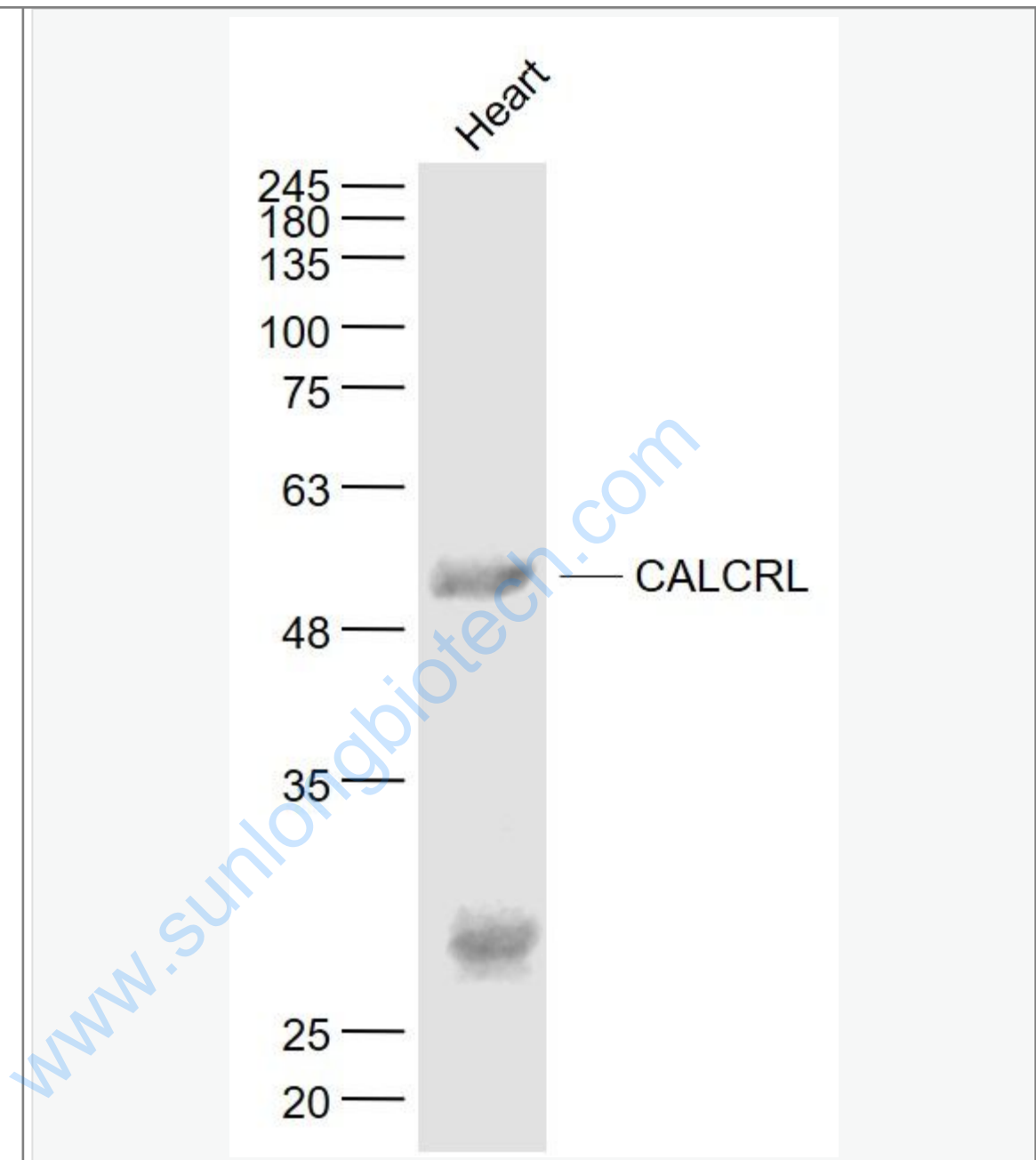
Primary: Anti-CALCRL (SL21475R) at 1/1000 dilution

Secondary: IRDye800CW Goat Anti-Rabbit IgG at 1/20000 dilution

Predicted band size: 50 kD

Observed band size: 50 kD

www.sunlongbiotech.com



Sample:

Heart (Mouse) Lysate at 40 ug

Primary: Anti- CALCRL (SL21475R) at 1/1000 dilution

Secondary: IRDye800CW Goat Anti-Rabbit IgG at 1/20000 dilution

Predicted band size: 50 kD

	Observed band size: 50 kD
--	---------------------------

www.sunlongbiotech.com