



## Rabbit Anti-Plasminogen antibody

SL21498R

<b>Product Name:</b>	Plasminogen
<b>Chinese Name:</b>	纤维蛋白溶酶原抗体
<b>Alias:</b>	Plasminogen; Angiostatin; DKFZp779M0222; Microplasmin; Plasmin; Plasmin heavy chain A; PLG; PLMN_HUMAN.
<b>Organism Species:</b>	Rabbit
<b>Clonality:</b>	Polyclonal
<b>React Species:</b>	Human,Mouse,
<b>Applications:</b>	WB=1:500-2000ELISA=1:500-1000IHC-P=1:400-800IHC-F=1:400-800ICC=1:100-500IF=1:100-500 (Paraffin sections need antigen repair) not yet tested in other applications. optimal dilutions/concentrations should be determined by the end user.
<b>Molecular weight:</b>	53/87kDa
<b>Cellular localization:</b>	The cell membraneExtracellular matrixSecretory protein
<b>Form:</b>	Lyophilized or Liquid
<b>Concentration:</b>	1mg/ml
<b>immunogen:</b>	KLH conjugated synthetic peptide derived from human Plasminogen:691-790/810
<b>Lsotype:</b>	IgG
<b>Purification:</b>	affinity purified by Protein A
<b>Storage Buffer:</b>	0.01M TBS(pH7.4) with 1% BSA, 0.03% Proclin300 and 50% Glycerol.
<b>Storage:</b>	Store at -20 °C for one year. Avoid repeated freeze/thaw cycles. The lyophilized antibody is stable at room temperature for at least one month and for greater than a year when kept at -20°C. When reconstituted in sterile pH 7.4 0.01M PBS or diluent of antibody the antibody is stable for at least two weeks at 2-4 °C.
<b>PubMed:</b>	<a href="#">PubMed</a>
<b>Product Detail:</b>	The protein encoded by this gene is a secreted blood zymogen that is activated by proteolysis and converted to plasmin and angiostatin. Plasmin dissolves fibrin in blood clots and is an important protease in many other cellular processes while angiostatin inhibits angiogenesis. Defects in this gene are likely a cause of thrombophilia and ligneous conjunctivitis. Two transcript variants encoding different isoforms have been found for this gene.[provided by RefSeq, Dec 2009]

**Function:**

Plasmin dissolves the fibrin of blood clots and acts as a proteolytic factor in a variety of other processes including embryonic development, tissue remodeling, tumor invasion, and inflammation. In ovulation, weakens the walls of the Graafian follicle. It activates the urokinase-type plasminogen activator, collagenases and several complement zymogens, such as C1 and C5. Cleavage of fibronectin and laminin leads to cell detachment and apoptosis. Also cleaves fibrin, thrombospondin and von Willebrand factor. Its role in tissue remodeling and tumor invasion may be modulated by CSPG4. Binds to cells.

**Subunit:**

Interacts with CSPG4 and AMOT. Interacts (via the Kringle domains) with HRG; the interaction tethers PLG to the cell surface and enhances its activation.

**Subcellular Location:**

Secreted. Note=Locates to the cell surface where it is proteolytically cleaved to produce the active plasmin. Interaction with HRG tethers it to the cell surface.

**Post-translational modifications:**

In the presence of the inhibitor, the activation involves only cleavage after Arg-580, yielding two chains held together by two disulfide bonds. In the absence of the inhibitor, the activation involves additionally the removal of the activation peptide.

**Similarity:**

Belongs to the peptidase S1 family. Plasminogen subfamily.

Contains 5 kringle domains.

Contains 1 PAN domain.

Contains 1 peptidase S1 domain.

**SWISS:**

P00747

**Gene ID:**

5340

**Database links:**

[Entrez Gene: 5340](#) Human

[Entrez Gene: 18815](#) Mouse

[Entrez Gene: 85253](#) Rat

[Omim: 173350](#) Human

[SwissProt: P00747](#) Human

[SwissProt: P20918](#) Mouse

[SwissProt: Q01177](#) Rat

[Unigene: 143436](#) Human

[Unigene: 971](#) Mouse

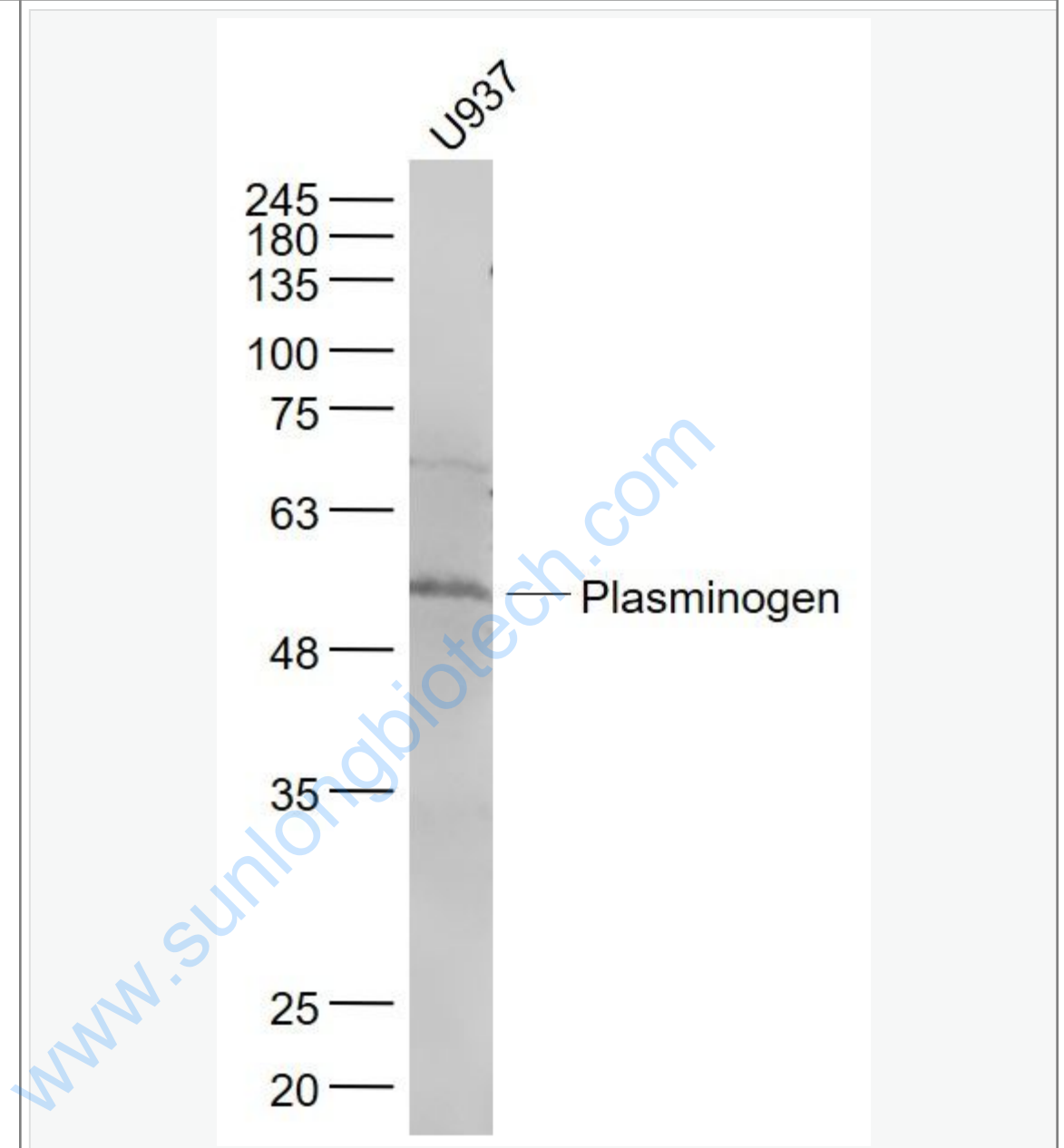
[Unigene: 20178](#) Rat

**Important Note:**

This product as supplied is intended for research use only, not for use in human, therapeutic or diagnostic applications.

[www.sunlongbiotech.com](http://www.sunlongbiotech.com)

Picture:



Sample:

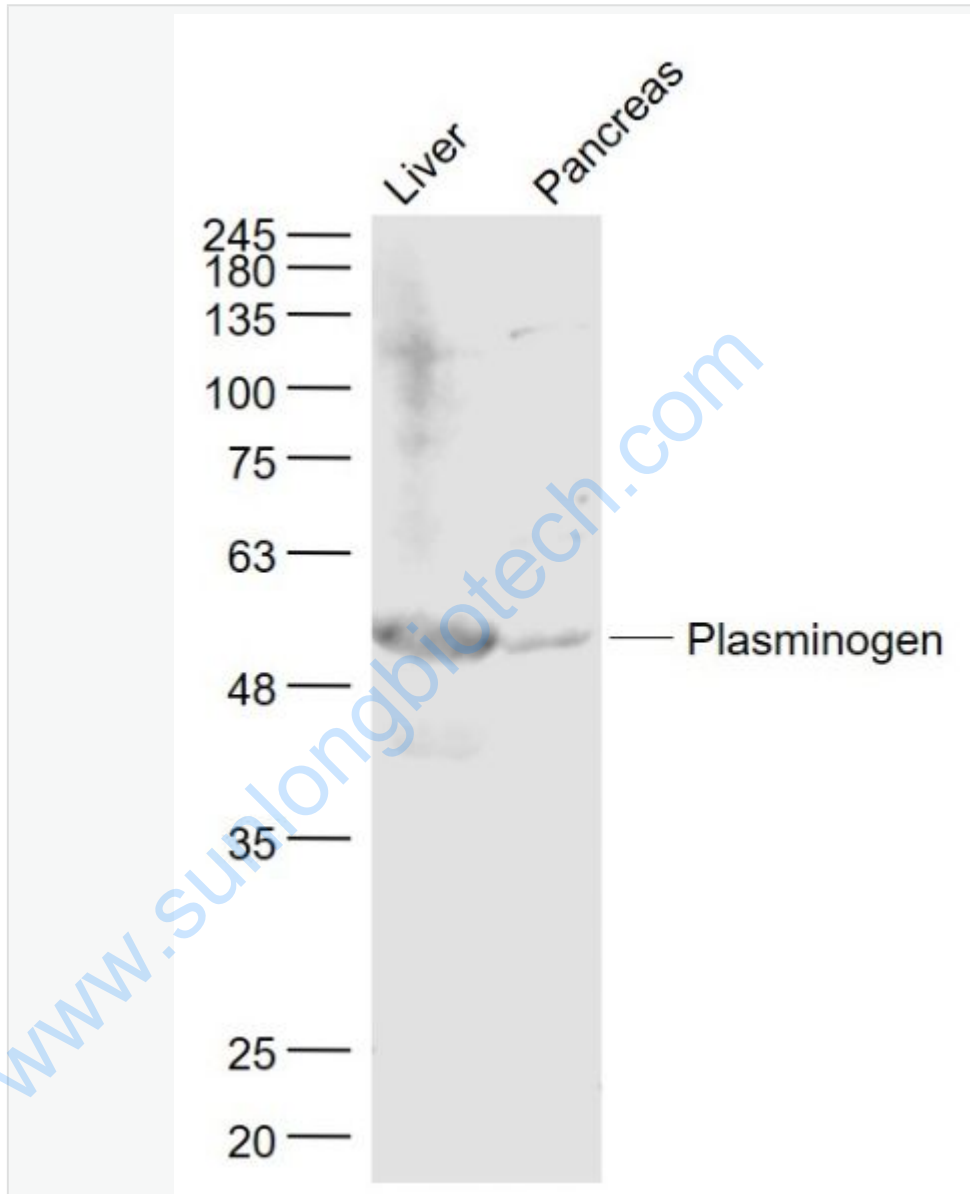
U937(Human) Cell Lysate at 30 ug

Primary: Anti- Plasminogen (SL21498R) at 1/1000 dilution

Secondary: IRDye800CW Goat Anti-Rabbit IgG at 1/20000 dilution

Predicted band size: 53/87 kD

Observed band size: 55 kD



Sample:

Liver (Mouse) Lysate at 40 ug

Pancreas (Mouse) Lysate at 40 ug

Primary: Anti- Plasminogen (SL21498R) at 1/1000 dilution

Secondary: IRDye800CW Goat Anti-Rabbit IgG at 1/20000 dilution

Predicted band size: 53/87 kD

Observed band size: 55 kD

[www.sunlongbiotech.com](http://www.sunlongbiotech.com)